

STRUCTURE ATTACHMENTS

STEEL CONCRETE INSERT

Figure 75

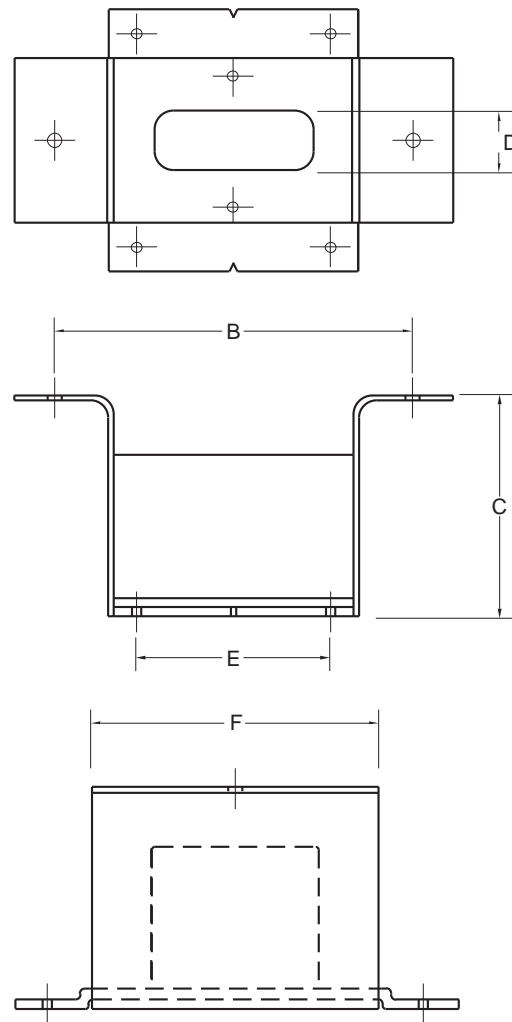
The Figure 75 is designed to provide an economical method of overhead rod support by being embedded in concrete. The insert is nailed in place prior to the concrete being poured. After the pour has cured the insert knock-out is removed, a Figure 75N Insert Nut installed, and the rod attached.

Material: Carbon Steel.

Compliance: Federal Specification WW-H-171 (Type 19), MSS-SP-69 Type 18.

Finish: Plain, Painted, Electro-Galvanized.

Ordering: Specify rod size, figure number, and finish. If an Insert Nut Figure 75N is required, it must be ordered separately by Figure number rod size and finish. For Metric applications specify Figure M75 and M75N.



CONCRETE INSERT NUT

Figure 75N

Designed for use with Figure 75 Steel Concrete Insert.

Finish: Plain, Galvanized.

Ordering: Specify rod size, figure number, and finish. For Metric applications specify Figure M75N.

**FIGURE 75 – STEEL CONCRETE INSERT
FIGURE 75N – CONCRETE INSERT NUT**

ROD SIZE	MAXIMUM LOAD	B	C	D	E	F	WEIGHT EACH	
							INSERT	NUT
3/8	600	3 3/8	1 1/8	7/8	1 1/2	2	0.44	0.10
M10	2669	79	41	22	38	51	0.20	0.05
1/2	600	3 3/8	1 1/8	7/8	1 1/2	2	0.44	0.14
M12	2669	79	41	22	38	51	0.20	0.06
5/8	600	3 3/8	1 1/8	7/8	1 1/2	2	0.44	0.16
M16	2669	79	41	22	38	51	0.20	0.07
3/4	600	3 3/8	1 1/8	7/8	1 1/2	2	0.44	0.17
M20	2669	79	41	22	38	51	0.20	0.08

Maximum Load Rating is dependant upon the selected nut size used.

DIMENSIONS	TEMPERATURE	LOADS	WEIGHT
INCHES	FAHRENHEIT	POUNDS	POUNDS
MILLIMETERS	CELSIUS	NEWTONS	KILOGRAMS