

PIPE SUPPORT

Figure 136

The Figure 136 is used in conjunction with a pipe standard and flange at the base to support piping from below. Both pipe standard and flange must be ordered separately.

Compliance: Federal Specification A-A-1192A Type 38, MSS-SP-69 Type 38.

Finish: Plain, Painted, Electro-Galvanized, Hot-Dip Galvanized.

Ordering: Specify pipe size, figure number, and finish. For Metric applications Specify Figure M136.

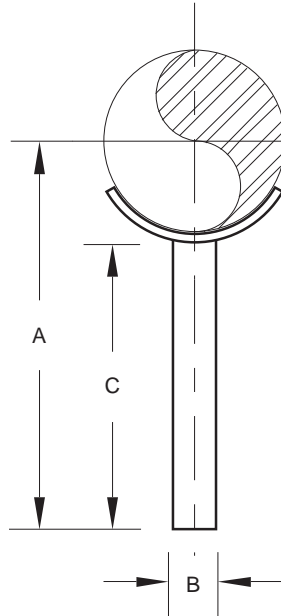


FIGURE 136 – PIPE SUPPORT

PIPE SIZE	A	SIZE B	ROD LENGTH C	WGT. SIZE
2	7 ⁷ / ₁₆	⁷ / ₈	6	1.57
50	192	M22	152	0.71
3	8 ¹ / ₂	⁷ / ₈	6	1.85
80	206	M22	152	0.84
4	8 ⁵ / ₈	1	6	2.70
100	219	M24	152	1.22
5	9 ¹³ / ₁₆	1	6	3.14
125	233	M24	152	1.42
6	9 ¹³ / ₁₆	1 ¹ / ₄	6	4.90
150	249	M30	152	2.22
8	10 ¹³ / ₁₆	1 ¹ / ₄	6	5.75
200	275	M30	152	2.61
10	11 ⁷ / ₈	1 ¹ / ₂	6	9.88
250	302	M36	152	4.48
12	12 ⁷ / ₈	1 ¹ / ₂	6	11.4
300	327	M36	152	5.17

ADJUSTABLE PIPE SUPPORT

Figure 137

Designed to support pipe from below, the Figure 137 is used in conjunction with flange or base mounted pipe column. The stem is threaded its full length and furnished with a nut to allow for vertical adjustment.

Material: Carbon Steel.

Compliance: Federal Specification A-A-1192 Type 49, and MSS SP-69 Type 49.

Finish: Plain, Painted, Electro-Galvanized, Hot-Dip Galvanized.

Ordering: Specify figure number, finish and pipe size. For Metric applications specify M137.

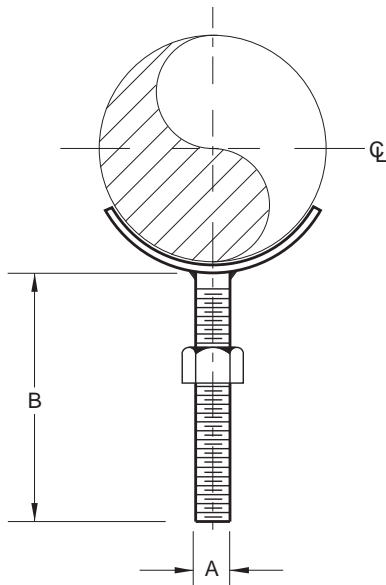


FIGURE 137 – ADJUSTABLE PIPE SUPPORT

PIPE SIZE	A	B	WEIGHT EACH
1	⁵ / ₈	8	0.70
25	M16	203	0.32
1 ¹ / ₂	⁵ / ₈	8	0.74
40	M16	203	0.34
2	⁵ / ₈	8	0.80
50	M16	203	0.36
2 ¹ / ₂	⁵ / ₈	8	0.84
65	M16	203	0.38
3	⁵ / ₈	8	1.02
80	M16	203	0.46
3 ¹ / ₂	⁵ / ₈	8	1.06
90	M16	203	0.48
4	⁷ / ₈	8	1.86
100	M22	203	0.84
5	⁷ / ₈	8	2.50
125	M22	203	1.13
6	1	8	2.98
160	M24	203	1.35
8	1	8	3.28
200	M24	203	1.49
10	1 ¹ / ₄	8	6.30
250	M30	203	2.86
12	1 ¹ / ₄	8	7.00
300	M30	203	3.18

DIMENSIONS		TEMPERATURE	LOADS	WEIGHT
INCHES		FAHRENHEIT	POUNDS	POUNDS
MILLIMETERS		CELSIUS	NEWTONS	KILOGRAMS