

PIPE ATTACHMENTS

ONE HOLE PIPE CLAMP

Figure 237

Designed to support light duty pipe lines that run next to walls or beams.

Material: Carbon Steel.

Finish: Plain, Painted, Electro-Galvanized, Hot-Dip Galvanized.

Ordering: Specify pipe size, figure number and finish. For Metric applications specify Figure M237S.

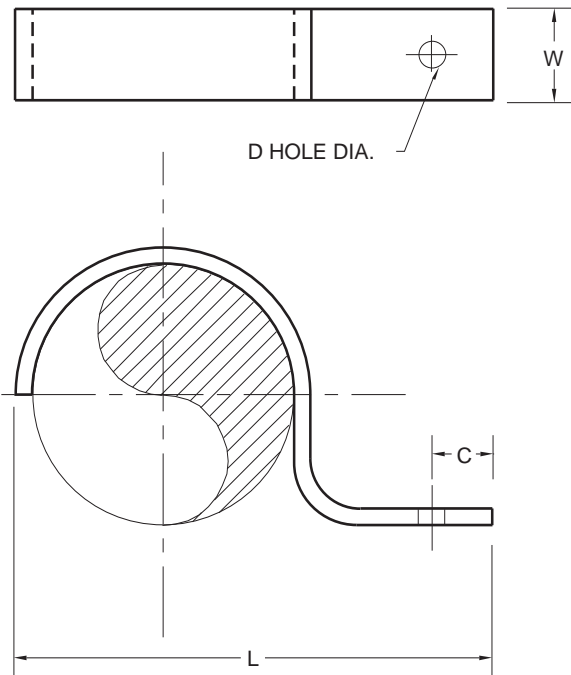


FIGURE 226 – ONE HOLE PIPE CLAMP

PIPE SIZE	C	D	L	W	WEIGHT EACH
½	⅞	⅜	2⅞	¾	0.05
15	22	7	67	19	0.02
¾	1	⅜	3	1	0.06
20	25	7	76	25	0.02
1	1¼	⅜	3¼	1	0.09
25	29	7	83	25	0.04
1¼	⅞	11/32	3½	1	0.12
32	22	9	89	25	0.05
1½	1¼	13/32	4½	1	0.16
40	32	10	114	25	0.07
2	1¼	13/32	6⅞	1	0.24
50	32	10	168	25	0.11
2½	1½	⅝	6⅞	1¼	0.50
65	38	14	168	32	0.23
3	1½	⅝	6½	1¼	0.69
80	38	14	165	32	0.31
4	1½	⅝	8	1¼	1.40
100	38	14	203	32	0.64

PIPE SUPPORT

Figure 247

The Figure 247 is used in conjunction with a pipe stand and flange at the base to support piping from below. Both pipe stand and base must be ordered separately. Please see Figure 138.

Load Rating: Up to 650° F (343° C).

Compliance: Federal Specification A-A-1192A Type 38, MSS-SP-69 Type 38.

Finish: Plain, Painted, Electro-Galvanized, Hot-Dip Galvanized.

Ordering: Specify pipe size, figure number, and finish. For Metric applications specify Figure M247.

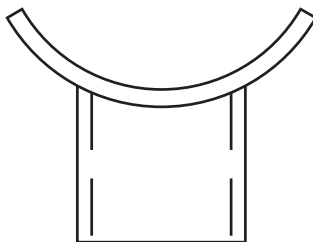


FIGURE 247 – PIPE SUPPORT

PIPE SIZE	COUPLING PIPE SIZE	WEIGHT EACH
2	1¼	1.35
50	32	0.61
3	1½	2.45
80	40	1.11
4	2	3.63
100	50	1.65
5	2	4.30
125	50	1.95
6	2½	7.03
150	65	3.19
8	2½	8.53
200	65	3.87
10	3	13.00
250	80	5.91
12	3	15.10
300	80	6.84

DIMENSIONS	TEMPERATURE	LOADS	WEIGHT
INCHES	FAHRENHEIT	POUNDS	POUNDS
MILLIMETERS	CELSIUS	NEWTONS	KILOGRAMS