

PIPE ATTACHMENTS

ALLOY THREE BOLT PIPE CLAMP

Figure 304Z

The Figure 304Z is designed for hot insulated pipelines. The spacer on the top inner bolt provides uniform space for the connecting eyerod or weldless eyenut. See Figure 91Z for higher load ratings.

Temperature range: above 750° F (399° C) to 1050° F (566° C).

Material: Chrome Molybdenum Steel, ASTM A-387 Grade 22.

Compliance: Federal Specification A-A-1192A Type 3, MSS-SP-69 Type 3 and BSPSS-BS3974.

Finish: Plain.

Ordering: Specify figure number, and pipe size. For Metric applications, specify Fig M304Z.

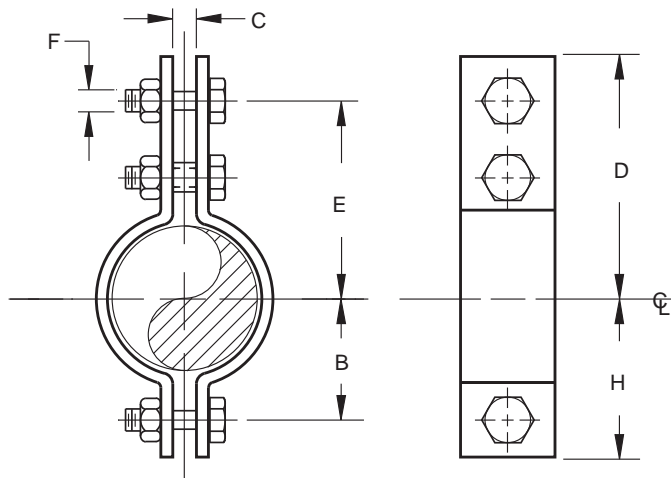


FIGURE 304Z – ALLOY THREE BOLT PIPE CLAMP

PIPE SIZE	MAXIMUM LOAD			B	C	D	TAKE OUT E	F	H	WEIGHT EACH
	950° F 510° C	1000° F 538° C	1050° F 566° C							
1½	1400	1000	700	1¾	1	47/8	47/8	5/8	2¾	2.48
40	6228	4448	3114	44	25	124	105	M16	60	1.12
2	1400	1000	700	2½	1	57/8	57/8	5/8	2¾	2.70
50	6228	4448	3114	54	25	149	130	M16	70	1.22
2½	1400	1000	700	2¼	1	61/8	5¾	5/8	3	2.76
65	6228	4448	3114	57	25	156	137	M16	76	1.25
3	1400	1000	700	2¾	1	6¾	6	5/8	3½	3.19
80	6228	4448	3114	70	25	171	152	M16	89	1.45
4	2300	1600	1100	3¾	1	75/8	6½	¾	4½	7.30
100	10231	7117	4893	86	25	194	165	M20	114	3.31
5	2300	1600	1100	4	1½	81/8	7	¾	5½	7.96
125	10231	7117	4893	102	29	206	178	M20	130	3.61
6	2600	1800	1300	4¾	1¼	10	85/8	7/8	61/8	12.26
150	11566	8007	5783	121	32	254	219	M22	156	5.56
8	2600	1800	1300	5¾	1¼	11	95/8	7/8	71/8	14.04
200	11566	8007	5783	146	32	279	244	M22	181	6.37
10	3000	2100	1500	67/8	1¼	12	10½	1	8¼	21.33
250	13345	9342	6673	175	32	305	267	M24	210	9.68
12	3000	2100	1500	83/8	1½	131/8	115/8	1	97/8	24.00
300	13345	9342	6673	213	38	333	295	M24	251	10.89
14	3900	2800	2000	91/8	2	141/8	12¾	1¼	10¾	38.78
350	17349	12456	8897	232	51	365	324	M30	273	17.59
16	3900	2800	2000	10	2	151/8	14	1¼	11¾	43.13
400	17349	12456	8897	254	51	397	356	M30	298	19.56
18	3900	2800	2000	115/8	2	16¾	151/8	1¼	13¼	47.78
450	17349	12456	8897	295	51	425	384	M30	337	21.67
20	5000	3200	2000	12¾	2	17½	157/8	1½	14	58.67
500	22242	14235	8897	314	51	445	403	M36	356	26.61
24	5500	3500	2700	14¾	1½	197/8	177/8	1½	16¾	90.82
600	24466	15569	12011	375	38	505	454	M36	416	41.20

DIMENSIONS	TEMPERATURE	LOADS	WEIGHT
INCHES	FAHRENHEIT	POUNDS	POUNDS
MILLIMETERS	CELSIUS	NEWTONS	KILOGRAMS