


# contract<sup>®</sup>

S O L I D V I N Y L T I L E



- 1 1/8" gauge solid vinyl tile in various sizes**
- 2 Easily buffs to a shine, no waxing required**
- 3 Built-in antimicrobial barrier to control bacteria and fungi**
- 4 May be seamlessly installed by heat welding**
- 5 Flexible for quick and easy flash coving**

 EnviroFlex™ product. May contribute to one or more LEED® credits.



cuffs out. Style in. With FLEXCO® solid vinyl tile, the homogenous color extends through the entire tile thickness. So, instead of the minor scuffs that leave a major mark on vinyl composition tile (VCT), FLEXCO® solid vinyl tile stays looking cleaner for a longer period of time. FLEXCO® vinyl compounds are a brilliant white, which means our colors look brighter for a longer period of time and provide a cleaner look than the grayish white of some VCT products.



Somerset Medical Center,  
Somerville, New Jersey  
Complete specs on page 52.

**FLEXCO**<sup>®</sup>  
innovative design. flooring performance.

**contract**<sup>®</sup>  
C O L O R S



Ice Onyx  
C-6



Eclipse  
C-7



Cloud  
C-10



Rain Shower  
C-11



Fog  
C-12



Smoke  
C-13



Ice Gray  
C-14



Ice Blue  
C-16



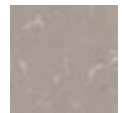
Ice Green  
C-17



Ice Beige  
C-18



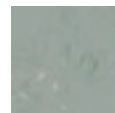
Haze  
C-19



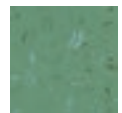
Sand Storm  
C-20



Sun Splash  
C-22



Moss  
C-23



Spring Green  
C-24



Cool Cucumber  
C-25



Mist  
C-26



Clear Blue  
C-27



Lavender Breeze  
C-28



Berry Blaze  
C-29

V I N Y L F L O O R I N G