

## PIPE ATTACHMENTS

### COPPER TUBING SWIVEL RING

#### Figure 800CT

Designed for the support of non-insulated static copper tubing lines. The swivel nut is knurled to provide a gripping surface when adjusting the tubing elevation.

**Compliance:** Federal Specification A-A-1192A Type 10, MSS SP-69 Type 10.

We also offer Swivel Ring hangers that are for carbon steel pipe (Figure 800), PVC coated (Figure 800PVC), and for NFPA requirements (Figure 800FP), in this catalog.

**Material:** Carbon Steel.

**Finish:** Copper.

**Ordering:** Specify copper tubing size and figure number. For Metric applications specify Figure M800CT.

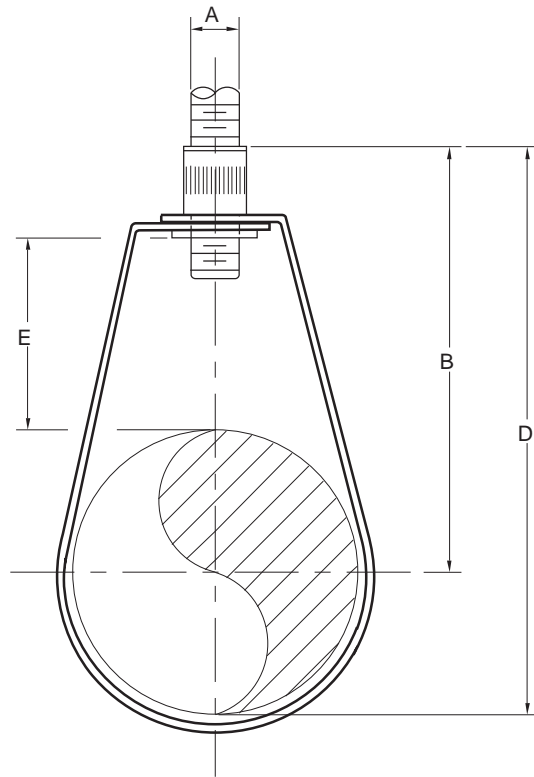


FIGURE 800CT - ADJUSTABLE SWIVEL RING

PIPE SIZE	MAXIMUM LOAD	A	B	D	E	WEIGHT EACH
½	300	⅜	2⅜	3¼	1 <sup>11</sup> / <sub>16</sub>	0.11
15	1335	M10	60	83	43	0.05
¾	300	⅜	2⅜	3⅜	1⅜	0.11
20	1335	M10	60	79	35	0.05
1	300	⅜	2½	3⅜	1	0.11
25	1335	M10	64	79	25	0.05
1¼	300	⅜	2¾	3¼	1 <sup>5</sup> / <sub>16</sub>	0.13
32	1335	M10	70	83	24	0.06
1½	300	⅜	2 <sup>5</sup> / <sub>16</sub>	3⅝	1⅞	0.13
40	1335	M10	75	92	29	0.06
2	300	⅜	3 <sup>7</sup> / <sub>16</sub>	4¼	1 <sup>1</sup> / <sub>16</sub>	0.15
50	1335	M10	84	105	27	0.07
2½	525	⅜	4	4⅝	1⅞	0.16
65	2335	M10	102	117	29	0.07
3	525	½	4 <sup>1</sup> / <sub>16</sub>	5 <sup>5</sup> / <sub>16</sub>	1 <sup>1</sup> / <sub>16</sub>	0.32
80	2335	M12	116	141	33	0.15
3½	525	½	4 <sup>9</sup> / <sub>16</sub>	5⅞	1⅞	0.35
90	2335	M12	116	149	29	0.16
4	650	½	5 <sup>5</sup> / <sub>16</sub>	6½	1 <sup>3</sup> / <sub>16</sub>	0.38
100	2891	M12	141	165	30	0.17
5	1000	½	6¼	8⅜	1⅞	0.58
125	4448	M12	159	213	41	0.26
6	1000	½	7 <sup>7</sup> / <sub>16</sub>	9 <sup>13</sup> / <sub>16</sub>	2¼	0.92
150	4448	M12	183	249	57	0.42

DIMENSIONS		TEMPERATURE	LOADS	WEIGHT
INCHES	FAHRENHEIT	POUNDS	POUNDS	
MILLIMETERS	CELSIUS	NEWTONS	KILOGRAMS	