

**PIPE STRAP**

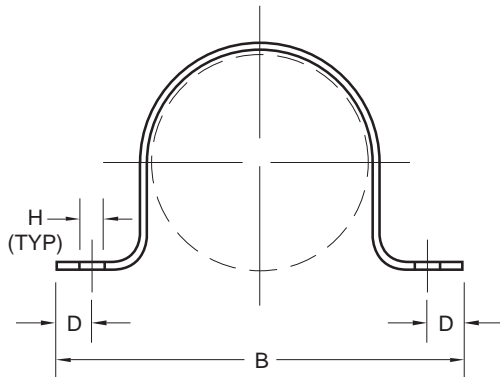
**Figure C1108**

The Figure C1108 is designed hold piping flush to its mounting surface. This item may be bolted to a structure or channel strut, or welded into place.

**Material:** Carbon Steel.

**Finish:** Electro-Plated.

**Ordering:** Specify pipe size, figure number, and finish. For Metric applications Specify Figure MC1108.



**FIG. C1108 – PIPE STRAP**

PIPE SIZE	MAX VERT LOAD	B	D	H	WGT EACH
1/2	300	2 13/16	7/16	3/32	0.20
15	1335	71	11	7	0.09
3/4	300	3 5/16	7/16	3/32	0.23
20	1335	84	11	7	0.10
1	300	3 11/16	7/16	3/32	0.28
25	1335	94	11	7	0.13
1 1/4	300	4	7/16	3/32	0.33
32	1335	102	11	7	0.15
1 1/2	300	4 1/8	7/16	3/32	0.36
40	1335	105	11	7	0.16
2	800	5 13/16	1 3/16	1 3/32	0.94
50	3559	148	21	10	0.43
2 1/2	800	6 5/16	1 3/16	1 3/32	1.11
65	3559	160	21	10	0.50
3	800	7	1 3/16	1 3/32	1.30
80	3559	178	21	10	0.59
3 1/2	800	7 7/8	1 3/16	1 3/32	1.49
90	3559	200	21	10	0.68
4	800	7 7/8	1 3/16	1 3/32	1.73
100	3559	200	21	10	0.78
5	800	9 1/16	1 3/16	1 3/32	1.83
125	3559	230	21	10	0.83
6	800	10 13/16	1 3/16	1 3/32	2.43
150	3559	275	21	10	1.10

**DRAIN, WASTE, VENT CLAMP**

**Figure DWV**

Designed to provide economical and quick way to support of non-insulated PVC drain, waste, and vent pipe lines with sufficient adjustment to most all application. Can be field adjusted to suit unique configurations.

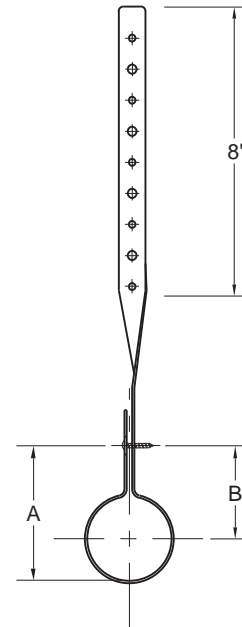
**Material:** Carbon Steel.

**Finish:** Galvanized.

**Ordering:** Specify pipe size and figure number. For Metric applications specify Figure MDWV.

**FIGURE DWV**

PIPE SIZE	A	B
1 1/2	3 1/2	2 1/2
40	89	64
2	4	2 7/8
50	102	73
3	5 1/2	3 3/4
80	140	95
4	6	3 3/4
100	152	95



DIMENSIONS		TEMPERATURE	LOADS	WEIGHT
INCHES	FAHRENHEIT	POUNDS	POUNDS	
MILLIMETERS	CELSIUS	NEWTONS	KILOGRAMS	