

WASHER PLATE

Figure 260

This product to be welded to back to back channels or angles for supporting pipe with rods or U-Bolts.

Sufficient contact surface to the supporting structure must be made to develop maximum load capacity.

Dimension "A" should not be exceeded.

Material: Carbon Steel

Finish: Plain, Painted, Electro-Galvanized Hot-Dip Galvanized

Ordering: Specify figure number, finish and rod size.

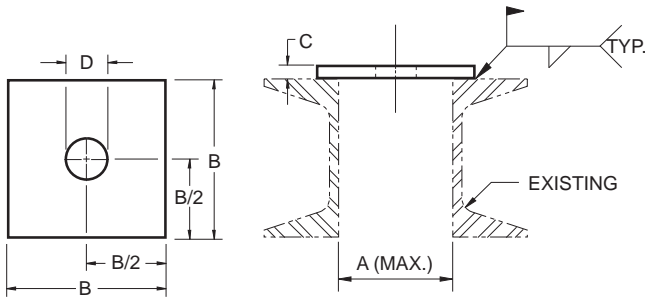


FIGURE 260 – ALL-THREAD HANGER ROD

ROD SIZE	MAX. LOAD	A	B	C	HOLE D	WEIGHT EACH
3/8	730	1 1/2	3	3/4	7/16	0.63
M10	3247	38	76	6	11	0.29
1/2	1350	1 1/2	3	3/4	9/16	0.61
M12	6005	38	76	6	14	0.28
5/8	2160	1 1/2	3	3/8	11/16	0.95
M16	9608	38	76	10	17	0.43
3/4	3230	2	4	3/8	13/16	1.60
M20	14368	51	102	10	21	0.73
7/8	4480	2	4	1/2	15/16	2.17
M20	19928	51	102	13	24	0.98
1	5900	2 1/2	4	1/2	17/16	2.15
M24	26244	64	102	13	27	0.98
1 1/4	9500	3	5	1/2	17/8	3.28
M30	42258	76	127	13	35	1.49
1 1/2	13800	3 1/2	5	5/8	17/8	4.05
M36	61385	89	127	16	41	1.84
1 3/4	18600	3 1/2	5	5/8	2	3.88
M42	82737	89	127	16	51	1.76
2	24600	4	6	3/4	2 1/4	4.47
M48	109426	102	152	19	57	2.03
2 1/4	32300	4	6	3/4	2 1/2	6.62
M56	143677	102	152	19	64	3.00
2 1/2	39800	4 1/2	6	3/4	2 3/4	6.40
M64	177038	114	152	19	70	2.90
2 3/4	49400	4 1/2	6	3/4	3	6.16
M72	219741	114	152	19	76	2.79
3	60100	4 1/2	6	3/4	3 1/4	5.89
M80	267337	114	152	19	83	2.67
3 1/4	71900	4 1/2	6	3/4	3 1/2	5.56
M80	319826	114	152	19	89	2.52
3 1/2	84700	5	7	3/4	3 3/4	8.07
M90	376763	127	178	19	95	3.66
3 3/4	98500	5	7	3/4	4	7.75
M95	438148	127	178	19	102	3.52

DIMENSIONS		TEMPERATURE	LOADS	WEIGHT
INCHES	FAHRENHEIT	POUNDS	POUNDS	
MILLIMETERS	CELSIUS	NEWTONS	KILOGRAMS	