

PIPE ATTACHMENTS

RISER CLAMP

Figure 124

This product is designed to support vertical piping by resting on shear lugs welded to the pipe. Shear lugs are not supplied.

The stated Maximum Loads are based upon the use of the clamp as a rigid support. Use of the clamp with springs units will double the given Maximum Loads. Rated loads are for up to 650° F (343° C).

Material: Carbon Steel.

Finish: Plain, Painted, Hot-Dip Galvanized.

Ordering: Specify figure number, finish, and pipe size. For Metric applications specify Figure M124.

NOTE: For your Special Riser Clamp requirements that are not covered by this product, please contact us to discuss your application.

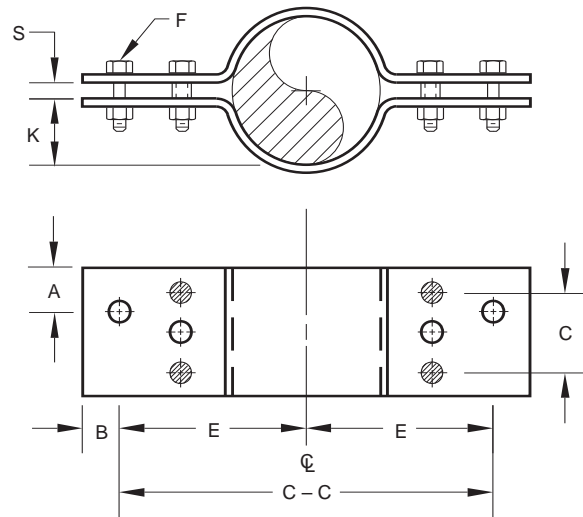


FIGURE 124 – RISER CLAMP

PIPE SIZE	MAX LOAD	A	B	C	C-C	E	F	K	S	WEIGHT EACH
2	900	1¼	2	-	18	9	¾	1¾	¾	17.5
50	4004	32	51	-	457	229	M10	5	19	7.9
2½	900	1¼	2	-	20	10	¾	1½	¾	19.1
65	4004	32	51	-	508	254	M10	27	19	8.7
3	1500	1½	2	-	20	10	½	1¾	¾	29.4
80	6673	38	51	-	508	254	M12	35	19	13.3
4	2200	1½	2	-	22	11	½	1⅞	¾	38.5
100	9786	38	51	-	559	279	M12	48	19	17.5
5	2200	¾	2	-	22	11	½	2⅜	¾	43.2
125	9786	19	51	-	559	279	M12	60	19	19.6
6	3000	⅞	2	-	24	12	⅝	2¼	1	56.8
150	13345	22	51	-	610	305	M16	71	25	25.8
8	3000	⅞	2	-	27	13½	⅝	3¼	1	79.2
200	13345	22	51	-	686	343	M16	97	25	35.9
10	5500	1¼	2	-	30	15	⅞	4⅝	1½	143.3
250	24466	32	51	-	762	381	M22	117	38	65.0
12	7800	1⅜	2½	-	32	16	1	5½	1¾	183.7
300	34698	35	64	-	813	406	M24	140	44	83.3
14	7800	1⅜	2½	-	34	17	1	6⅞	1¾	194.5
350	34698	35	64	-	864	432	M24	156	44	88.2
16	9000	1½	2½	-	36	18	1⅞	7	2	224.7
400	40036	38	64	-	914	457	M30	178	51	101.9
18	9000	1½	2½	-	39	19½	1⅞	8	2	280.7
450	40036	38	64	-	991	495	M30	203	51	127.3
20	13500	1⅞	3	4	42	21	1¾	8¾	2½	429.1
500	60053	48	76	102	1067	533	M36	222	64	194.6
24	13500	1⅞	3	4	45	22½	1¾	10¾	2½	465.1
600	60053	48	76	102	1143	572	M36	273	64	211.0

DIMENSIONS		TEMPERATURE	LOADS	WEIGHT
INCHES	FAHRENHEIT	POUNDS	POUNDS	
MILLIMETERS	CELSIUS	NEWTONS	KILOGRAMS	