

UNDERGROUND SOCKET CLAMP WASHER

Figure 258

The Figure 258 is for use with our Figure 158 and Figure 158DB Underground Clamp. Two (2) Washers are required per clamp. When installed the lug bears against the bolt which prevents the washer from sliding off the clamp.

Material: Cast Iron.

Finish: Plain, Painted, Electro-Galvanized.

Ordering: Specify rod size, figure number, and finish. For Metric applications specify Figure M258.

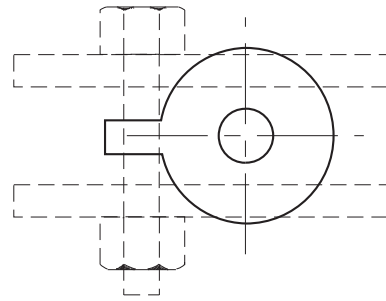
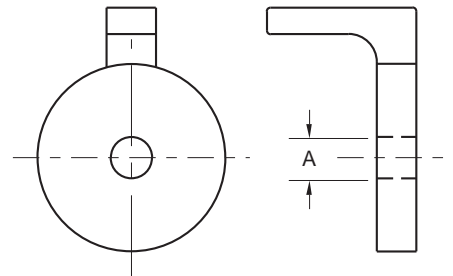


FIGURE 258 – UNDERGROUND SOCKET CLAMP WASHER

ROD SIZE A	USED WITH CLAMP SIZE	WEIGHT EACH
3/4	4" to 12"	1.25
M20	100 to 300	0.57
1 1/4	14" to 18"	2.85
M30	350 to 450	1.29
1 1/2	20" to 36"	7.06
M36	500 to 900	3.20



OFFSET PIPE CLAMP

Figure 179

The Offset Pipe Clamp is used on pipe lines running at a fixed distance from a wall or floor. The standard clearance is two inches (51mm) from the O.D. of pipe to the face of the surface. Non-standard clearances can be fabricated upon request.

Material: Carbon Steel.

Load Rating: Up to 650° F (343° C).

Finish: Plain, Painted, Electro-Galvanized, Hot-Dip Galvanized.

Ordering: Specify pipe size, figure number, and finish. For Metric applications specify Figure M179.

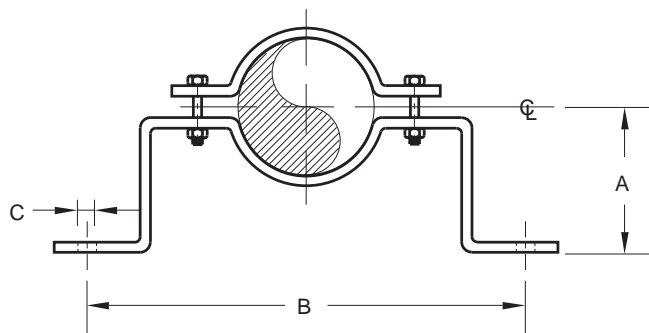


FIGURE 179 – OFFSET PIPE CLAMP

PIPE SIZE	MAX LOAD	A	B	C	WGT EACH
3/4	190	2 3/4	8 3/4	7/16	1.3
20	845	70	222	11	0.59
1	190	2 7/8	9 1/4	7/16	1.4
25	845	73	235	11	0.64
1 1/4	190	3 1/16	9 3/4	7/16	1.5
32	845	78	248	11	0.68
1 1/2	190	3 3/16	10	7/16	1.6
40	845	81	254	11	0.73
2	420	3 1/2	11 1/4	5/16	2.8
50	1868	89	286	14	1.27
2 1/2	420	3 3/4	11 3/4	5/16	2.9
65	1868	95	298	14	1.32
3	420	4 1/16	12 7/8	5/16	3.2
80	1868	103	327	14	1.45
4	610	4 3/16	13 7/8	5/16	4.2
100	2714	116	352	14	1.91
5	610	5 1/16	15 3/8	11/16	6.5
125	2714	129	397	17	2.95
6	870	5 5/8	16 3/4	11/16	7.2
150	3870	143	425	17	3.27
8	870	6 1/8	18 3/4	11/16	8.3
200	3870	168	476	17	3.76
10	1050	7 3/8	21 1/2	13/16	12.4
250	4671	187	546	21	5.62
12	1200	8 3/8	24 7/8	13/16	21.0
300	5338	213	632	21	9.53

DIMENSIONS		TEMPERATURE	LOADS	WEIGHT
INCHES	MILLIMETERS	FAHRENHEIT	POUNDS	POUNDS
		CELSIUS	NEWTONS	KILOGRAMS