

## PIPE ATTACHMENTS

### VEE CLEVIS HANGER

#### Figure 200V

Designed to support non-insulated, stationary, plastic lines from above. Used with Figure 200VT Vee Trough (not furnished). The lower nut (not furnished) adjusts the pipe line to the proper elevation, the top nut (not furnished) prevents loosening due to vibration, and must be tightened securely to assure proper hanger performance.

**Material:** Carbon Steel.

**Compliance:** Federal Specification A-A-1192A Type 1, MSS-SP-69 Type 1.

**Finish:** Plain, Painted, Electro-Galvanized, Hot-Dip Galvanized.

**Ordering:** Specify size, figure number, and finish. For Metric applications specify Figure M200V.

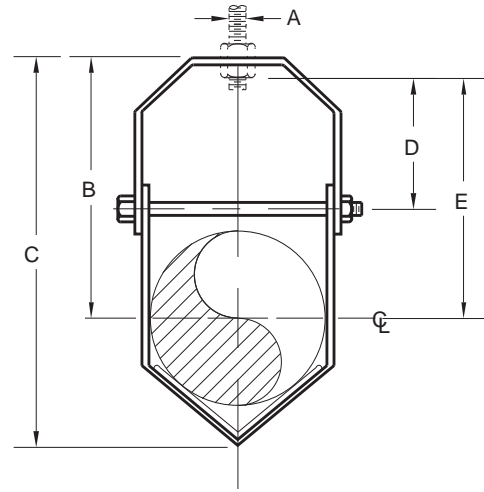


FIGURE 200V – VEE CLEVIS HANGER

| SIZE | PIPE SIZE | MAXIMUM LOAD | A   | B   | C   | D  | E   | WEIGHT EACH |
|------|-----------|--------------|-----|-----|-----|----|-----|-------------|
| 1    | ½         | 150          | ¾   | 4¾  | 5½  | 1½ | 4⅞  | 0.38        |
| 1    | 15        | 667          | M10 | 121 | 140 | 41 | 110 | 0.17        |
| 1    | ¾         | 150          | ¾   | 4⅞  | 5½  | 1½ | 4⅞  | 0.38        |
| 1    | 20        | 667          | M10 | 116 | 140 | 41 | 105 | 0.17        |
| 1    | 1         | 150          | ¾   | 4¾  | 5½  | 1½ | 3⅞  | 0.38        |
| 1    | 25        | 667          | M10 | 111 | 140 | 41 | 100 | 0.17        |
| 1    | 1¼        | 150          | ¾   | 4½  | 5½  | 1½ | 3⅞  | 0.38        |
| 1    | 32        | 667          | M10 | 105 | 140 | 41 | 94  | 0.17        |
| 1    | 1½        | 150          | ¾   | 4   | 5½  | 1½ | 3⅞  | 0.38        |
| 1    | 40        | 667          | M10 | 102 | 140 | 41 | 90  | 0.17        |
| 1    | 2         | 150          | ¾   | 3⅞  | 5½  | 1½ | 3¼  | 0.38        |
| 1    | 50        | 667          | M10 | 94  | 140 | 41 | 83  | 0.17        |
| 2    | 2½        | 150          | ¾   | 6½  | 8¼  | 1¾ | 5⅞  | 1.15        |
| 2    | 65        | 667          | M16 | 168 | 222 | 44 | 148 | 0.52        |
| 2    | 3         | 150          | ¾   | 6⅞  | 8¼  | 1¾ | 5⅞  | 1.15        |
| 2    | 80        | 667          | M16 | 157 | 222 | 44 | 137 | 0.52        |
| 2    | 3½        | 150          | ¾   | 5⅞  | 8¼  | 1¾ | 5   | 1.15        |
| 2    | 90        | 667          | M16 | 148 | 222 | 44 | 127 | 0.52        |
| 2    | 4         | 150          | ¾   | 5⅞  | 8¼  | 1¾ | 4⅞  | 1.15        |
| 2    | 100       | 667          | M16 | 138 | 222 | 44 | 117 | 0.52        |

| DIMENSIONS  |            | TEMPERATURE | LOADS     | WEIGHT |
|-------------|------------|-------------|-----------|--------|
| INCHES      | FAHRENHEIT | POUNDS      | POUNDS    | POUNDS |
| MILLIMETERS | CELSIUS    | NEWTONS     | KILOGRAMS |        |