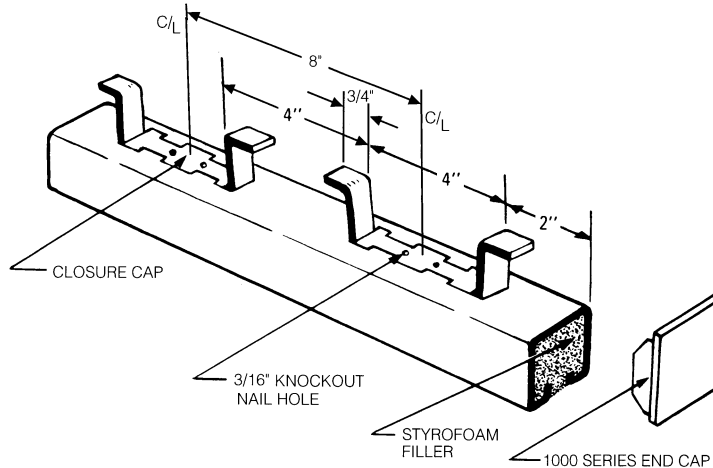


MULTI-STRUT®

CONCRETE INSERTS

Multi-Strut Concrete inserts are supplied with the 1000 series End Caps and a strip inserted into the channel to prevent any concrete seepage. The foam is readily removable.

*Other size channels available in concrete inserts upon request.

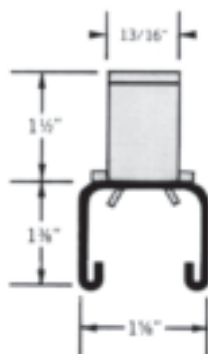


M-142-IN CONCRETE INSERT

Channel: $1\frac{3}{8}$ " x $1\frac{5}{8}$ " x $1\frac{3}{8}$ "
12 Ga. Wt/100'-188#
Stocked in Pre-Galvanized & Plain in 10' & 20' lengths.

*Other lengths available

LOAD DATA: 1,800# in each 12" of Length



NOTE:

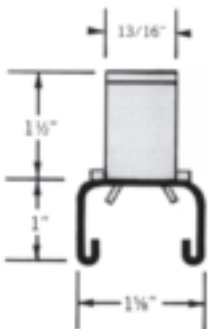
1. Safety Factor of 3
2. The above loading data was calculated in a concrete mixture which was proportioned so that the compression strength of the concrete was 2,500 to 3,000 pounds per square inch and that the load is dependent on the surrounding concrete.
3. Tests were performed in accordance with "The Metal Framing Manufacturers Association" 1983 specifications.

M-152-IN CONCRETE INSERT

Channel: 1" x $1\frac{5}{8}$ " x 1"
12 Ga. Wt/100'-162#
Stocked in Pre-Galvanized & Plain in 10' & 20' lengths.

*Other lengths available

LOAD DATA: 1,700# in each 12" of Length



NOTE:

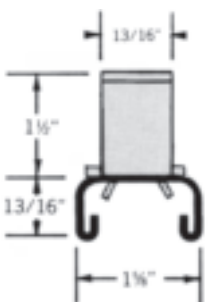
1. Safety Factor of 3
2. The above loading data was calculated in a concrete mixture which was proportioned so that the compression strength of the concrete was 2,500 to 3,000 pounds per square inch and that the load is dependent on the surrounding concrete.
3. Tests were performed in accordance with "The Metal Framing Manufacturers Association" 1983 specifications.

M-164-IN CONCRETE INSERT

Channel: $1\frac{3}{16}$ " x $1\frac{5}{8}$ " x $1\frac{3}{16}$ "
14 Ga. Wt/100'-121#
Stocked in Pre-Galvanized & Plain in 10' & 20' lengths.

*Other lengths available

LOAD DATA: 1,700# in each 12" of Length



NOTE:

1. Safety Factor of 3
2. The above loading data was calculated in a concrete mixture which was proportioned so that the compression strength of the concrete was 2,500 to 3,000 pounds per square inch and that the load is dependent on the surrounding concrete.
3. Tests were performed in accordance with "The Metal Framing Manufacturers Association" 1983 specifications.