

ROD AND ROD ATTACHMENTS

FORGED STEEL CLEVIS

Figure 276

Figure 276P

The Figure 276 is used to connect rod ends with structural steel welding lug plates or lugs welded to pipe. It provides a pivot point and adjustment. It can be supplied with a pin as Fig 276P.

Material: Forged Steel

Compliance: Federal Specification A-A-1192A Type 14, MSS-SP 58 Type 14, and BSPSS-BS3974.

Finish: Plain, Painted, Electro-galvanized, Hot-Dip Galvanized.

Note: The use of galvanized coatings at temperatures above 450°F is at the discretion of the customer.

Ordering: Specify figure number, rod size, pin size, grip and finish.

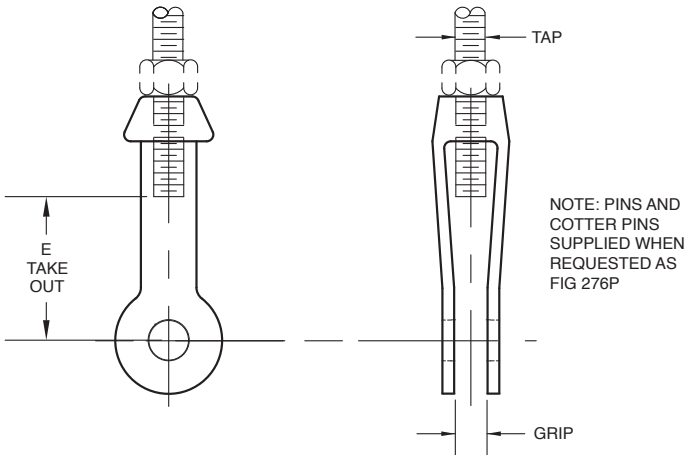


FIGURE 276 – FORGED STEEL CLEVIS

ROD SIZE	MAX. LOAD 650°F 343°C	PIN/ BOLT DIA.	E TAKE OUT	GRIP	276P WEIGHT EACH
3/8	730	1/2	3 1/2	1/2	1.00
M10	3247	M12	89	13	0.45
1/2	1350	5/8	3 1/2	5/8	0.90
M12	6005	M16	89	16	0.41
5/8	2160	3/4	3 1/2	5/8	0.90
M16	9608	M20	89	16	0.41
3/4	3230	7/8	4	3/4	3.00
M20	14368	M20	102	24	1.36
7/8	4480	1	4	7/8	3.40
M20	19928	M24	102	22	1.54
1	5900	1 1/8	5	1	5.10
M24	26244	M30	127	25	2.31
1 1/4	9500	1 3/8	5	1 1/4	5.50
M30	42258	M36	127	32	2.49
1 1/2	13800	1 5/8	6	1 1/2	8.50
M36	61385	M42	152	38	3.86
1 3/4	18600	1 7/8	6	1 1/2	12.90
M42	82737	M48	152	38	5.85
2	24600	2 1/4	7	2 1/2	23.30
M48	109426	M56	178	64	10.57
2 1/4	32300	2 1/2	8	2 1/2	35.10
M56	143677	M64	203	64	15.92
2 1/2	39800	2 3/4	8	2 1/2	36.00
M64	177038	M72	203	64	16.33

FORGED WELDLESS EYENUT

Figure 279

Figure 279L

The Figure 279 is used to connect rod ends with structural steel welded beam attachments or pipe clamps as a substitute for a welded eyerod. It provides a pivot point and adjustment. It can also be supplied tapped left hand as Fig 279L.

Material: Forged Steel

Compliance: Federal Specification A-A-1192A Type 17, MSS-SP 58 Type 17, and BSPSS-BS3974.

Finish: Plain, Painted, Electro-galvanized, Hot-Dip Galvanized

Note: The use of galvanized coatings at temperatures above 450°F is at the discretion of the customer.

Ordering: Specify figure number, rod size and finish.

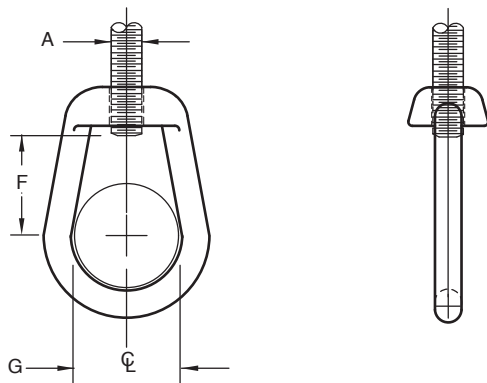


FIGURE 279 – FORGED WELDLESS EYENUT

ROD TAP A	MAX. LOAD 650°F 343°C	F	G	WEIGHT EACH
3/8	730	1	1 1/2	0.63
M10	3247	25	38	0.29
1/2	1350	1	1 1/2	0.63
M12	6005	25	38	0.29
5/8	2160	1	1 1/2	0.62
M16	9608	25	38	0.28
3/4	3230	1	1 1/2	0.60
M20	14368	25	38	0.27
7/8	4480	1 3/8	2	1.70
M20	19928	35	51	0.77
1	5900	1 3/4	2	1.70
M24	26244	44	51	0.77
1 1/4	9500	1 3/4	2 1/2	3.75
M30	42258	44	64	1.70
1 1/2	13800	1 3/4	2 1/2	3.50
M36	61385	44	64	1.59
1 3/4	18600	3 1/4	4	16.40
M42	82737	83	102	7.44
2	24600	3 1/4	4	15.90
M48	109426	83	102	7.21
2 1/4	32300	3 1/4	4	15.40
M56	143677	83	102	6.99
2 1/2	39800	3 1/4	4	14.90
M64	177038	83	102	6.76