

PIPE ATTACHMENTS

HEAVY DUTY THREE BOLT PIPE CLAMP

Figure 91

The Figure 91 is designed to accommodate higher loads than the Figure 304 for insulated piping. The spacer on the top inner bolt provides uniform space for the connecting eyerod or weldless eyenut.

Rated loads are for up to 750° F (399° C).

Material: Carbon Steel.

Compliance: Federal Specification A-A-1192A Type 3, MSS-SP-69 Type 3, and BSPSS-BS3974.

Finish: Plain, Painted, Hot-Dip Galvanized.

Ordering: Specify figure number, finish, and pipe size. For Metric applications specify Figure M91.

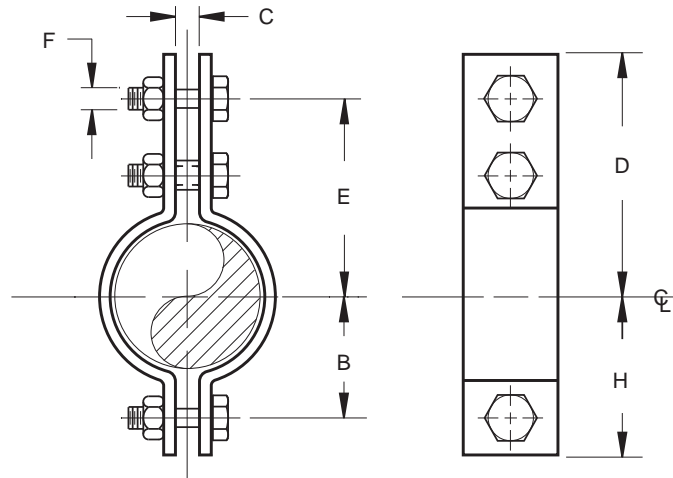


FIGURE 91 – HEAVY DUTY THREE BOLT PIPE CLAMP

PIPE SIZE	MAXIMUM LOAD		B	C	D	TAKE OUT E	F	H	WEIGHT EACH
	650° F 343° C	750° F 399° C							
6	3500	3125	4 ³ / ₄	1 ³ / ₄	10 ¹ / ₄	9	1	6	14.26
150	15569	13901	121	44	260	229	M24	152	6.47
8	4800	4285	6	2	11 ³ / ₈	10 ¹ / ₈	1 ¹ / ₈	7 ¹ / ₄	22.20
200	21352	19061	152	51	289	257	M30	184	10.07
10	5500	4910	7 ¹ / ₄	2 ¹ / ₄	13 ¹ / ₈	11 ³ / ₈	1 ¹ / ₄	9	35.10
250	24466	21842	184	57	333	289	M30	229	15.92
12	7000	6250	8 ⁷ / ₈	2 ¹ / ₂	14 ⁷ / ₈	12 ⁷ / ₈	1 ¹ / ₂	10 ⁷ / ₈	58.09
300	31139	27802	225	64	378	327	M36	276	26.35
14	9500	8485	10	2 ¹ / ₂	15 ⁵ / ₈	13 ⁵ / ₈	1 ¹ / ₂	12	71.31
350	42260	37745	254	64	397	346	M36	305	32.35
16	10000	8930	10 ⁷ / ₈	3	17 ¹ / ₈	14 ⁷ / ₈	1 ³ / ₄	13 ¹ / ₈	105.77
400	44484	39724	276	76	435	378	M42	333	47.98
18	13800	12325	12 ¹ / ₂	3 ¹ / ₂	19 ³ / ₄	17 ¹ / ₄	2	15	153.73
450	61388	54827	318	89	502	438	M48	381	69.73
20	15300	13665	13 ¹ / ₂	3 ¹ / ₂	20 ³ / ₄	18 ¹ / ₄	2	16	176.40
500	68060	60787	343	89	527	464	M48	406	80.02
24	16300	14555	16	3 ¹ / ₂	23 ¹ / ₄	20 ¹ / ₄	2	19	237.02
600	72509	64746	406	89	591	514	M48	483	107.51
30	20500	18300	19 ⁷ / ₈	4 ¹ / ₄	32 ³ / ₄	28 ¹ / ₄	2 ¹ / ₄	24 ³ / ₈	388.37
750	91192	81406	505	108	832	718	M56	619	176.16
36	28000	24 ⁵ / ₈	4 ¹ / ₂	40 ¹ / ₄	34 ³ / ₄	2 ³ / ₄	30 ¹ / ₈	678.00
900	124555	625	114	1022	883	M72	765	307.54

DIMENSIONS	TEMPERATURE	LOADS	WEIGHT
INCHES	FAHRENHEIT	POUNDS	POUNDS
MILLIMETERS	CELSIUS	NEWTONS	KILOGRAMS