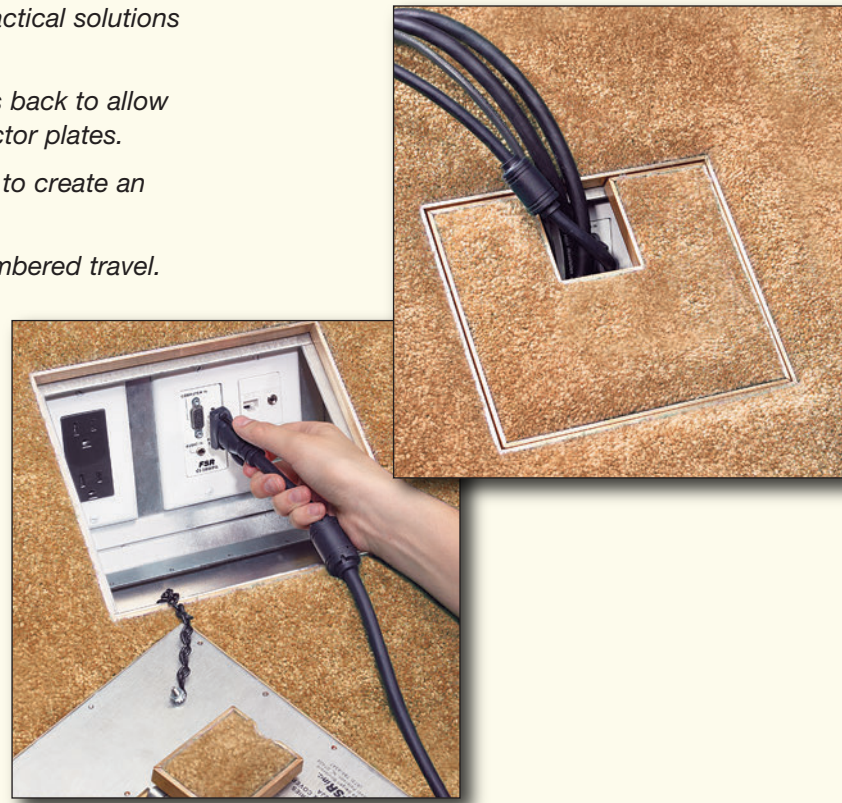


## Built for all Venues and all Surfaces

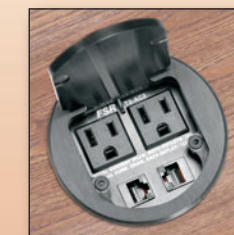
- Easily accessible floor boxes provide practical solutions for cable storage.
- A large hinged section of the cover folds back to allow full access to internal cables and connector plates.
- A smaller hinged trap door fastens back to create an efficient cable exit.
- Cable storage in the box allows unencumbered travel. ADA compliant.
- All Steel construction.
- Brass or aluminum low-profile edging blends seamlessly into decor.
- Hand mitered carpet edges provide elegant finishing touches.
- 11 gauge steel covers installed flush with floor. Only hand mitered carpet edges are visible when covers are in place.



## Add an FSR Table, Wall or Ceiling Box

### Table Boxes

Elegantly mount any gooseneck microphone with this T3-MJ mini table box. Available with one or two control buttons for momentary or maintained controls.

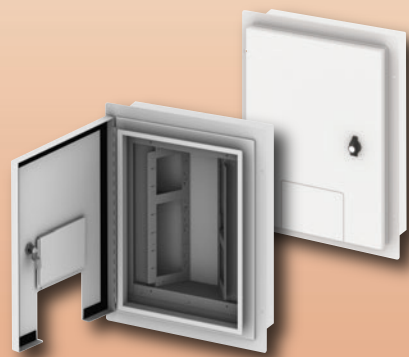


Patent Number US D553,306 S

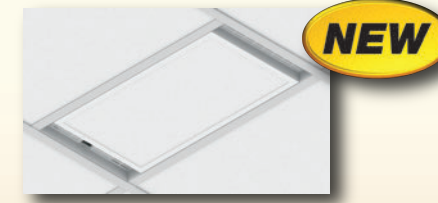
T3-AC2 table box is essential for convenient table top access. The 3 1/2" stylish box can be matched to any décor.

### Outdoor Wall Boxes

The new OWB-X Outdoor Wall Box series is the latest addition to FSR's metal products line. Locking doors in white are standard with other color and style options available upon request including windows.



### Ceiling Boxes



Eliminate those unsightly equipment boxes hanging off the projector poles or mounted to your walls. These enclosures allow you to conceal your equipment neatly out of sight and allows you to insert matching ceiling tiles.



## Facilities Using FSR Floor Boxes

Apple, Cupertino, CA  
 Facebook, Palo Alto, CA  
 Chattahoochee Nature Center, Roswell, GA  
 Howard Hughes Institute, Chevy Chase, MD  
 Bank of America, Boston, MA  
 Kennedy Center of Performing Arts, Wash., DC  
 Mohegan Sun, CT  
 New England School of Law, Boston, MA  
 First Baptist Church, Woodbridge, VA  
 FBI, Chantilly, VA  
 All Well Center Ice Arena, Plymouth, NH  
 UT Museum of Natural History, Salt Lake City  
 ESPN Zone, Las Vegas  
 Seminole Hard Rock Casino, Hollywood, FL  
 Merck & Company, Rahway, NJ  
 Federal Reserve Bank, Chicago, IL  
 Miami-Dade Fire Rescue, FL  
 Friendship Baptist Church, Cincinnati, OH  
 PIXAR Animation, Emeryville, CA  
 Mastercard International, MO  
 Princeton University, Princeton, NJ  
 Ocean House Hotel, Watch Hill, RI  
 Newberg Foursquare Church, Newberg, OR  
 Harvard Law School, MA  
 Broward County Courthouse, FL  
 Meadowlands Racetrack, NJ  
 Ralph Lauren, NY  
 Northeast Library, Washington, DC  
 Lindt Chocolate, NH  
 Google, CA  
 Freddie MAC, VA



Foster City City Hall  
Foster City, CA



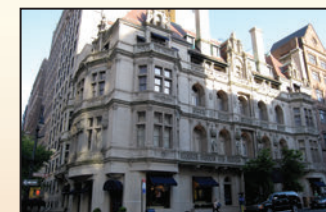
Saint Agnes Medical Center  
Fresno, CA



Hershey Convention Center  
Hershey, PA



Valleydale Church, Birmingham, AL



Ralph Lauren, NY



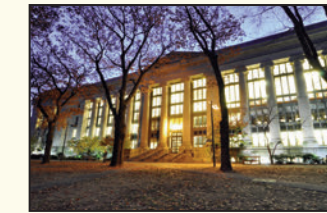
Meadowland Racetrack, NJ



Metropolitan Convention Center  
Columbia, SC



Tiger Woods Learning Center  
Orange Cty., CA



Harvard Law School  
Cambridge, MA



Marriott Marquis Hotel, NYC



Google, CA



Lindt Chocolate, NH

All FSR Table, Floor, Wall and Ceiling Boxes CAD drawings are available on our DVD.

For your FREE COPY, or for assistance in selecting the proper box to hold your power, data, voice, video, etc., please call us at 1-800-332-FSR1 (3771).

A complete BIM Object Library of all our products is on the ARCAT website ([www.ARCAT.com](http://www.ARCAT.com)) and is also available embedded in MasterSpec and SpecAgent software.



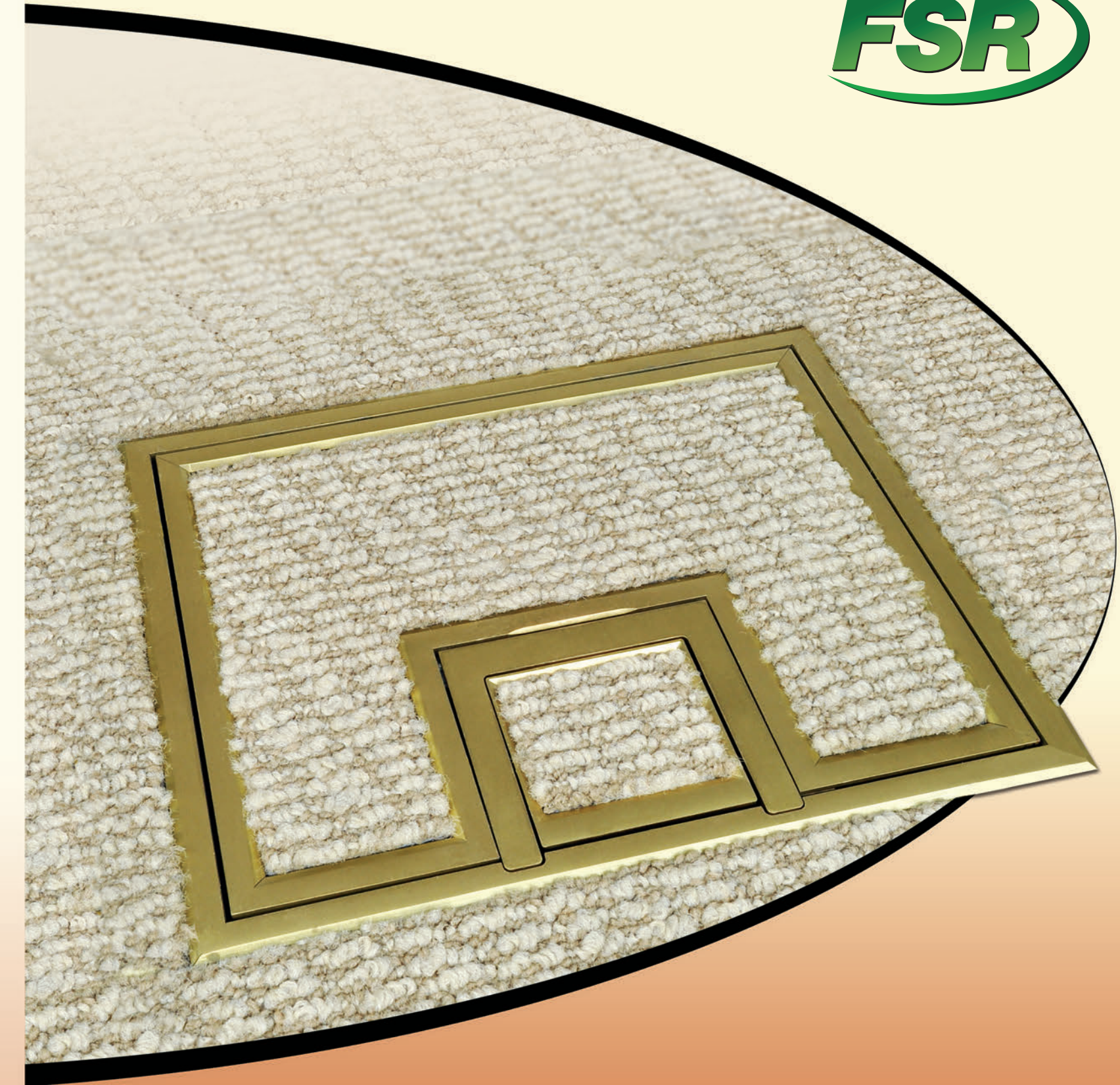
244 Bergen Boulevard · Woodland Park, NJ 07424  
 800.332.FSR1 · 973.785.4347 · F: 973.785.3318  
 W: [fsrinc.com](http://fsrinc.com) · E: [sales@fsrinc.com](mailto:sales@fsrinc.com)

LIT1189H

© 2013 FSR, Inc. All Rights Reserved



P: 800.332.FSR1 · W: [fsrinc.com](http://fsrinc.com) · E: [sales@fsrinc.com](mailto:sales@fsrinc.com)



## Floor Boxes

Elegant Cable Access  
for Any Type of Floor

## Cover Finishes

Elegant hand-mitered edging on covers blend with any decor or color combination. For use with virtually all choices of floor covering.



Available in brass, aluminum or painted edging to compliment floor covering.



The new U-Access cover design features a handle to easily lift the cover. All corner fasteners have been removed.

See a larger view at [bit.ly/1aKZzT6](http://bit.ly/1aKZzT6) or scan this QR Code



## Back Boxes

The steel construction makes FSR back boxes extremely sturdy. They are your solution for power, audio, video, telecommunications and data.

FL-500P, 540P, 600P and 640P have reconfigurable internal brackets. 6" and deeper back boxes also have cable "pass-through" capability.



**Model # FL-500P**  
Size: 10" X 12"  
Depth: 2-1/4", 3", 4", 6", 8", 10"  
Cover Size: 10-1/2" X 12-1/2" X 1/8"  
Knockouts: 12 total, either 1" and 1-1/4"  
Brackets: 2 Sloping field transformable  
Floor Type: Concrete



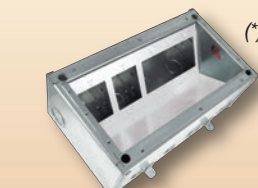
**Model # FL-540P**  
Size: 10" X 12"  
Depth: 4", 6", 8", 10"  
Cover Size: 10-1/2" X 12-1/2" X 1/8"  
Knockouts: 8 total either 1" and 1-1/4"  
Brackets: 2 Sloping field transformable  
Floor Type: Raised access, stage & computer floors



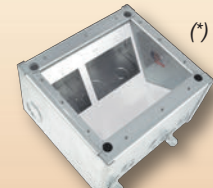
**Model # FL-600P**  
Size: 13.5" X 12"  
Depth: 3", 4", 6", 8, 10  
Cover Size: 14" X 12-1/2" X 1/8"  
Brackets: 2 Sloping field transformable  
Knockouts: 14 total either 1" and 1-1/4"  
Floor Type: Concrete



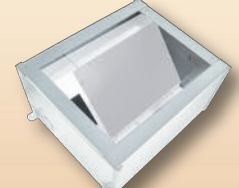
**Model # FL-640P**  
Size: 13.5" X 12"  
Depth: 4", 6", 8", 10"  
Cover Size: 14" X 12-1/2" X 1/8"  
Knockouts: 14 either 1" and 1-1/4"  
Brackets: 4 either 3/4" and 1/2"  
2 Sloping field transformable  
Floor Type: Raised access, stage & computer floors



**Model # FL-700**  
Size: 8" X 14"  
Depth: 5-1/4"  
Cover Size: 8" X 14" X 1/8"  
Knockouts: 6 either 1/2" and 3/4"  
8 either 1" and 1-1/4"  
Brackets: 1 Sloping  
Floor Type: Concrete



**Model # FL-710**  
Size: 8" X 9"  
Depth: 5-1/4"  
Cover Size: 8" X 9" X 1/8"  
Knockouts: 6 either 1/2" and 3/4"  
3 either 1" and 1-1/4"  
Brackets: 1 Sloping  
Floor Type: Concrete



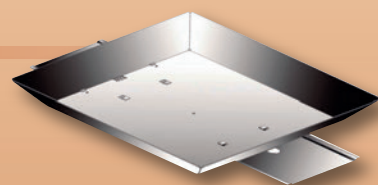
**Model # FL-2000**  
Size: 10" X 12"  
Depth: 6"  
Cover Size: 10-1/2" X 12-1/2"  
Knockouts: 2 total in AC section: 1 rear either 1/2" and 3/4"  
4 total in AV section: 3 rear and 1 right side either 1" and 1-1/4"  
Brackets: 1 Sloping  
Floor Type: Concrete

A temporary cover is included and protects the floor boxes interior during installation. Order your finished cover separately.

(\*) These boxes are designed for the new UL safety standard for scrub water. The standard only applies to boxes installed in concrete, not raised access boxes.

## Pour Pan

The FSR Pour Pan is the answer to Floor Box installations that are on grade. If your application is a poured concrete floor and the box rests on soil, rock or gravel, you must first install the Pour Pan.

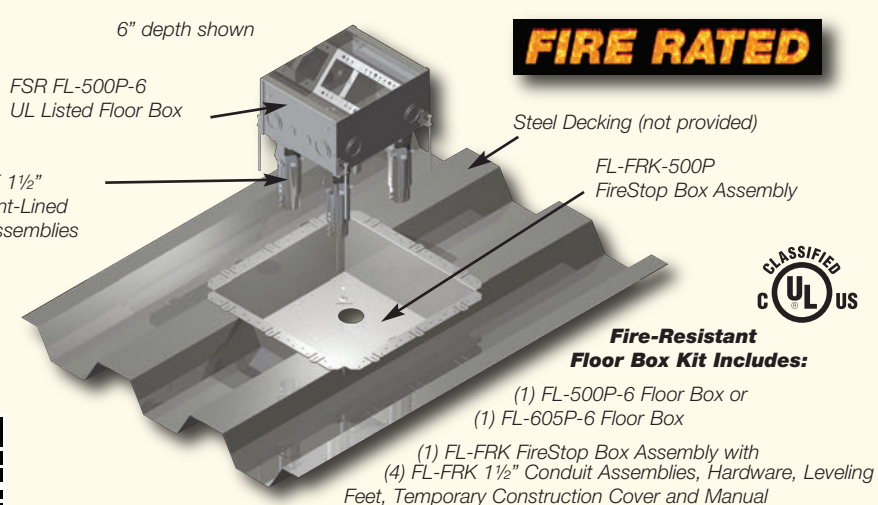


## Fire-Resistant Floor Box Solutions NEW

Our Fire-Resistant floor solutions expand the versatility of our floor box line by providing enhanced, fire-resistant versions of our existing products.

The Fire-Resistant Kit is offered in two sizes: the FL-500P-6-FRK and FL-605P-6-FRK. Both models include a UL listed 3-hour Fire-Resistant Floor Box system comprised of a FireStop box, and four FL-FRK 1 1/2" Intumescent-lined Conduit Assemblies, hardware and installation instructions. A temporary construction cover is included to protect the floor box's interior during installation. Order your finished cover separately.

Watch the video at [bit.ly/1j7yT0Z](http://bit.ly/1j7yT0Z) or scan this QR code



## SmartFit™ (Poke-Thru)

It's Not Just Power Anymore

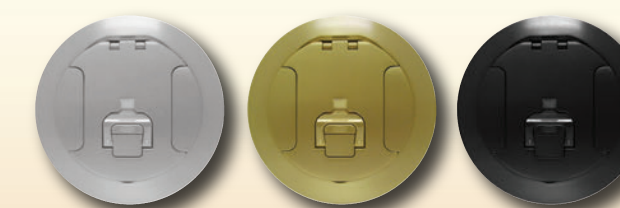
FSR SmartFit is an innovative system that provides flexible power and AV solutions for fire rated Poke-Thrus'. The SmartFit system features a universal cover assembly and multiple sub-plates that install in the fire rated Poke-Thrus' and are now available in 4", 6", and 8" sizes.

The system offers three architectural finishes: Aluminum, Brass, and Black, providing an attractive appearance with superior durability.

With the SmartFit system, FSR delivers one consistent look for installations with power and audio/video requirements. There are sub-plates available in the SmartFit line, including a Dual Decora and 3-IPS-insert sub-plate.



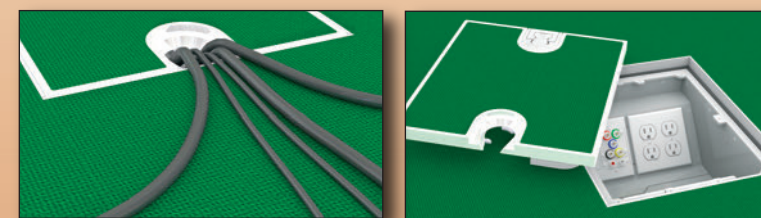
**FIRE RATED**  
Buy American Compliant



## The FLH20 "Super" Floor Box

The FLH20 High Load Capacity Floor Box combines rugged construction and elegant design for carpeted and non-carpeted floors.

Perfect for ballrooms, convention spaces, and high traffic areas where heavy equipment such as forklifts, automobiles, scissor lifts, and portable stages are used.



U.S. PAT. 7,989,710

**Compartment Dividers:**  
Remove or arrange as needed to isolate compartments.

**Center Dividers:**  
Remove to run cables across compartments.

**Field Configurable Interior**



## Raised Floor Boxes

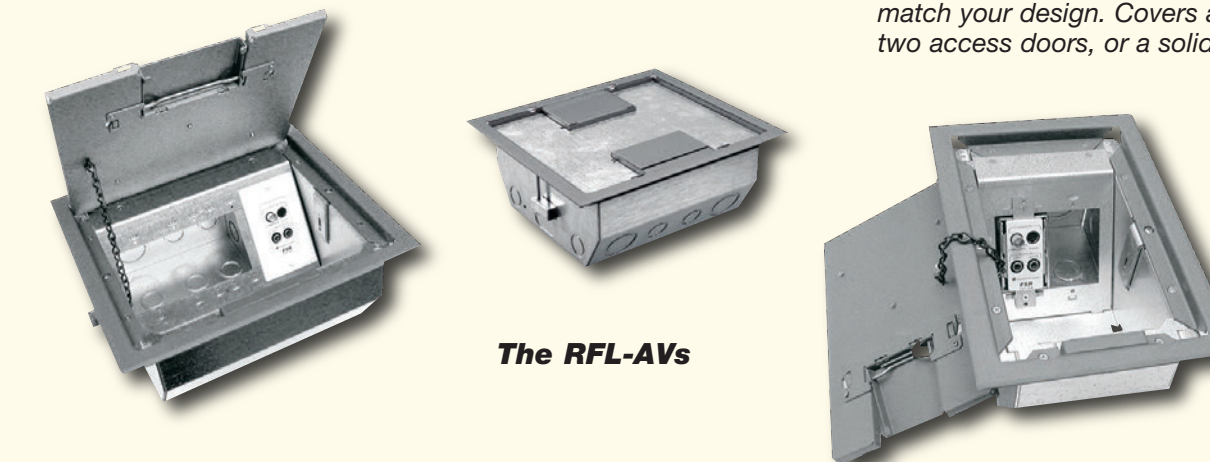
The all metal construction provides one or two cable access doors, or a solid metal cover.



FSR's Raised Access Floor Boxes are designed to handle a variety of connections and applications.

The RFL Series of Floor Boxes is available in many sizes and depths. The all-metal construction is built to handle the rigors of a floor environment, yet blends into the floor pattern.

The beveled steel carpet rim is available standard in gray, black or clay. We will provide custom finishes to match your design. Covers are available with one or two access doors, or a solid metal cover.



The RFL-AVs

## Stage Boxes

One piece all welded design providing both strength and ease of installation. Cover is painted with Sandtex for a non-skid finish, available in black or oak.



**Model # FP-2-BLK**  
Size: 7-3/4" X 5-3/4"  
Depth: 4-3/4"  
Cover Size: 7-3/4 X 5-3/4" X 1/8"  
Knockouts: Open area for a two gang box. (Customer supplied)  
Brackets: 1 Sloping  
Floor Type: Raised access, stage & computer floors

**Model # FL-1200**  
Size: 3-3/8" X 4-5/8"  
Depth: 4-1/2"  
Cover Size: 4-3/4 X 6" X 1/8"  
Knockouts: 1 rear either 1/2" and 3/4"  
1 bottom either 1/2" and 3/4"  
Brackets: 1 Sloping  
Floor Type: Raised access, stage & computer floors

**Model # FL-1300**  
Size: 5-1/8" X 7-1/8"  
Depth: 4-7/8"  
Cover Size: 6-1/8" X 8-1/2" X 1/8"  
Knockouts: 2 rear concentric either 1/2" and 3/4"  
1 bottom concentric either 1/2" and 3/4"  
1 each left and right sides concentric 1/2" and 3/4"  
Brackets: 1 Sloping  
Floor Type: Raised access, stage & computer floors

**Model # FL-1500**  
Size: 11 7/8" X 8"  
Depth: 6"  
Cover Size: 13-1/2" X 9-1/2" X 3/16"  
Knockouts: 4 rear either 1" and 1-1/4", 4 bottom either 1" and 1-1/4"  
Brackets: 1 Sloping  
Floor Type: Wood or linoleum over raised access, stage & computer floors

Please Note: Products not shown to size

## New UL Requirements

UL has added a new requirement for UL listing. Boxes to be installed in concrete must pass a "scrub water" test. FSR passed the test and exceeded the specs. Our boxes are approved, not only for carpet over concrete, but wood and tile as well. This requirement is only for boxes in concrete, it is not required for raised access or stage floors.