

TURNBUCKLE

Figure 132

The Figure 132 is used to connect right and left hand threaded rods together and provide for adjustment.

Material: Forged Steel

Compliance: Federal Specification A-A-1192A Type 13, MSS-SP 58 Type 13, and BSPSS-BS3974.

Finish: Plain, Painted, Electro-Galvanized, Hot-dip Galvanized

Note: The use of galvanized coatings at temperatures above 450°F is at the discretion of the customer.

Ordering: Specify figure number, finish and rod size. Larger rod sizes or openings are available upon request.

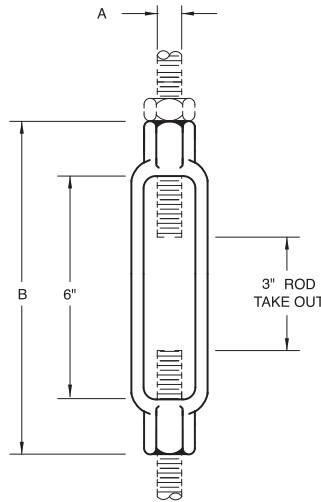


FIGURE 132 – TURNBUCKLE

ROD SIZE A	MAX. LOAD 650°F 343°C	B	WEIGHT EACH
3/8	730	7 7/8	0.30
M10	3247	181	0.14
1/2	1350	7 1/2	0.60
M12	6005	191	0.27
5/8	2160	7 7/8	1.00
M16	9609	200	0.45
3/4	3230	8 3/4	1.20
M20	14368	210	0.54
7/8	4480	8 5/8	1.90
M20	19929	219	0.86
1	5900	9	2.50
M24	26246	229	1.13
1 1/4	9500	9 3/8	3.80
M30	42260	232	1.72
1 1/2	13800	9 3/4	5.70
M36	61388	248	2.59
1 3/4	18600	10 3/8	8.20
M42	82740	264	3.72
2	24600	11	14.20
M48	109431	279	6.44
2 1/4	32300	12 7/8	27.00
M56	143683	327	12.25
2 1/2	39800	13 1/2	33.00
M64	177046	343	14.97

EXTENSION PIECE

Figure 157

The Figure 157 is designed for attaching rods to the Figure 82 Beam Clamp and similar types of attachments.

Material: Malleable Iron.

Maximum: Temperature: 450°F

Compliance: Federal Specification A-A-1192A Type 30, MSS-SP-58 Type 30 when used with a Figure 82.

Finish: Plain, Painted, Electro-Galvanized.

Ordering: Specify rod size, figure number, and finish. Order Figure 82 separately, if required.

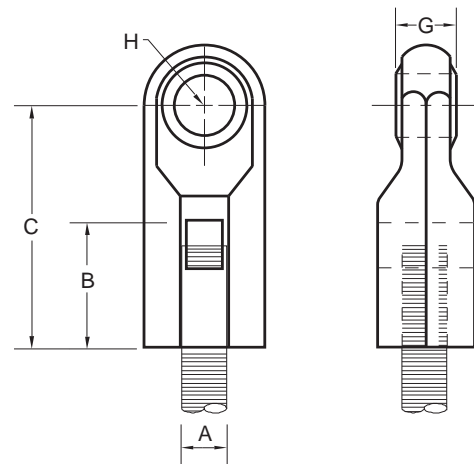


FIGURE 157 – EXTENSION PIECE

ROD SIZE A	MAXIMUM LOAD	B	C	G	H	WEIGHT EACH
3/8	610	1 1/4	2 1/8	1/2	1/2	0.20
M10	2714	32	54	13	13	0.09
1/2	1130	1 3/8	2 3/8	5/8	1/2	0.40
M12	5027	35	60	16	13	0.18
5/8	1810	1 1/2	2 1/2	5/8	1/2	0.44
M16	8052	38	64	16	13	0.20
3/4	2710	1 3/4	2 7/8	5/8	1/2	0.65
M20	12055	44	73	16	13	0.29
7/8	2950	1 7/8	3	3/4	9/16	0.78
M20	13123	48	76	19	14	0.35

DIMENSIONS	TEMPERATURE	LOADS	WEIGHT
INCHES	FAHRENHEIT	POUNDS	POUNDS
MILLIMETERS	CELSIUS	NEWTONS	KILOGRAMS