

## STEEL BRACKET

**Figure 150**

The Figure 150 bracket is for light duty applications. Made special to customer order.

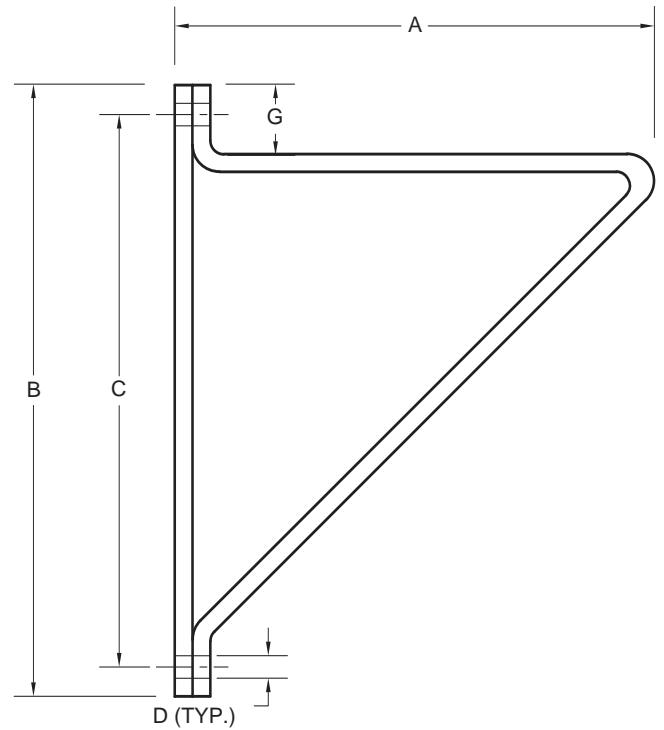
**Material:** Steel.

**Finish:** Plain, Painted, Hot-Dip Galvanized.

**Ordering:** Specify size, figure number, and finish. For Metric applications specify Figure M150.

**FIGURE 150 – STEEL BRACKET**

SIZE NO.	A	B	C	D	G	WGT. EACH
1	12	18	12	$\frac{5}{16}$	3	18.3
1	305	457	305	14	76	8.30
2	18	24	18	$\frac{5}{16}$	3	30.4
2	457	610	457	14	76	13.8
3	24	30	24	$\frac{11}{16}$	3	45.8
3	610	762	610	17	76	20.8
4	30	36	30	$\frac{11}{16}$	3	63.6
4	762	914	762	17	76	28.8
5	36	42	36	$\frac{13}{16}$	3	93.8
5	914	1067	914	21	76	42.5



## CEILING STIRRUP

**Figure 151**

The Figure 151 is designed for attaching a rod to a level ceiling or beam.

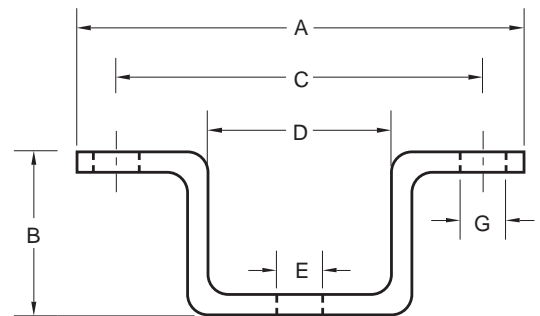
**Material:** Steel

**Finish:** Plain, Painted, Electro-galvanized, Hot-Dip Galvanized

**Ordering:** Specify size, figure number, and finish. For Metric applications specify Figure M151.

**FIGURE 151**

SIZE	MAXIMUM LOAD	A	B	C	D	E	G	WEIGHT EACH
1	600	$5\frac{1}{2}$	2	$4\frac{1}{2}$	$2\frac{1}{4}$	$\frac{5}{16}$	$\frac{5}{16}$	0.76
1	2669	140	51	114	57	14	14	0.34
2	880	6	$2\frac{1}{8}$	$4\frac{1}{2}$	$2\frac{1}{8}$	$\frac{11}{16}$	$\frac{5}{16}$	1.36
2	3915	152	54	114	54	17	14	0.62



DIMENSIONS		TEMPERATURE	LOADS	WEIGHT
INCHES	FAHRENHEIT	POUNDS	POUNDS	
MILLIMETERS	CELSIUS	NEWTONS	KILOGRAMS	