

THREE BOLT PIPE CLAMP

Figure 304

The Figure 304 is designed for hot insulated pipe lines up to 750°F. The spacer on the top inner bolt provides uniform space for the connecting eyerod or weldless eyenut. See Figure 91 for higher load ratings. We can also design to meet any of your special clamp requirements.

Material: Carbon Steel

Compliance: MSS-SP-69 Type 3, Federal Specification: A-A-1192A Type 3, and BSPSS-BS3974.

Finish: Plain, Painted, Galvanized (450°F Maximum)

Ordering: Specify pipe size, figure number and finish.

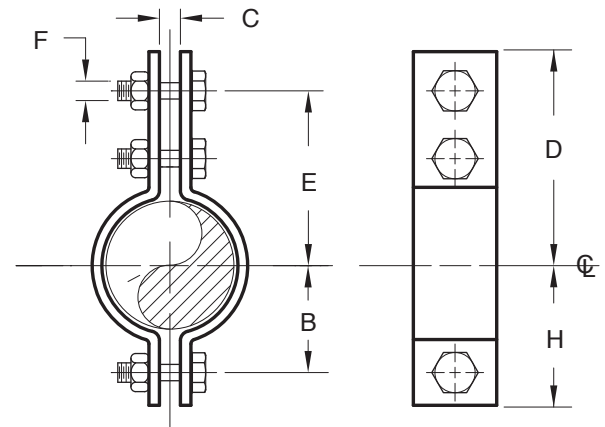


FIGURE 304 – THREE BOLT PIPE CLAMP

PIPE SIZE	MAXIMUM LOAD		B	C	D	TAKE OUT E	F	H	WEIGHT EACH
	650°F/343°C	750°F/399°C							
1/2	950	845	1	5/8	2 7/8	2 1/4	3/8	1 5/8	0.61
15	4226	3759	25	16	73	57	M10	41	0.28
3/4	950	845	1 1/8	5/8	3 1/4	2 1/2	3/8	1 3/4	0.66
20	4226	3759	29	16	83	64	M10	44	0.30
1	950	845	1 1/2	5/8	3 3/4	2 1/2	3/8	2 1/8	0.69
25	4226	3759	38	16	95	64	M10	54	0.31
1 1/4	950	845	1 1/2	3/4	3 5/8	2 7/8	3/8	2 1/4	0.75
32	4226	3759	38	19	92	73	M10	57	0.34
1 1/2	1545	1380	1 3/4	1	4 7/8	4 1/8	5/8	2 3/8	2.14
40	6873	6139	44	25	124	105	M16	60	0.97
2	1545	1380	2 1/8	1 1/8	5 7/8	5 1/8	5/8	2 3/4	2.43
50	6873	6139	54	29	149	130	M16	70	1.10
2 1/2	1545	1380	2 1/4	1 1/8	6 1/8	5 3/8	5/8	3	2.92
65	6873	6139	57	29	156	137	M16	76	1.32
3	1545	1380	2 3/4	1 1/8	6 3/8	6	5/8	3 1/2	3.19
80	6873	6139	70	29	168	152	M16	89	1.45
4	2500	2230	3 3/8	1	7 7/8	6 1/2	3/4	4 1/2	7.12
100	11121	9920	86	25	194	165	M20	114	3.23
5	2500	2230	4	1 1/8	8 7/8	7	3/4	5 1/8	7.96
125	11121	9920	102	29	206	178	M20	130	3.61
6	2865	2555	4 3/4	1 1/4	9 7/8	8 3/4	7/8	6 1/8	11.9
150	12745	11366	121	32	244	210	M20	156	5.38
8	2865	2555	5 3/4	1 1/4	10 5/8	9 1/4	7/8	7 7/8	13.6
200	12745	11366	146	32	270	235	M20	181	6.16
10	3240	2890	6 7/8	1 1/4	12	10 1/2	1	8 3/4	21.3
250	14413	12856	175	32	305	267	M24	210	9.68
12	3240	2890	8 7/8	1 1/2	13	11 1/2	1	9 7/8	23.7
300	14413	12856	213	38	330	292	M24	251	10.7
14	4300	3835	9 7/8	2	14 3/8	12 3/4	1 1/4	10 3/4	38.8
350	19128	17060	232	51	365	324	M30	273	17.6
16	4300	3835	10	2	15 5/8	14	1 1/4	11 3/4	42.9
400	19128	17060	254	51	397	356	M30	298	19.5
18	4300	3835	11 5/8	2	16 3/4	15 1/8	1 1/4	13 1/4	46.4
450	19128	17060	295	51	425	384	M30	337	21.0
20	4500	4015	12 3/8	2	17 1/2	15 7/8	1 3/8	14	58.7
500	20018	17860	314	51	445	403	M36	356	26.6
24	5490	4900	14 3/4	2	19 7/8	17 7/8	1 1/2	16 3/8	89.3
600	24422	21797	375	51	505	454	M36	416	40.5
28	6000	5357	17 1/2	2 1/4	24 1/4	21 3/4	1 3/8	20	112
700	26690	23830	445	57	616	552	M36	508	50.8
30	7500	6690	18 1/2	1 1/2	26 3/8	23 3/8	1 1/2	21	141
750	33363	29760	470	38	670	594	M36	533	63.9
32	8250	7366	19 5/8	2 1/2	28	25	1 1/2	22 5/8	194
800	36699	32767	498	64	711	635	M36	575	88.0
34	9800	8750	21 1/2	3	31 1/4	27 3/4	1 3/4	25	249
850	43594	38923	546	76	794	705	M42	635	112.9
36	10500	9360	22 1/2	3	32 1/8	28 3/4	1 3/4	26	246
900	46708	41637	572	76	816	730	M42	660	112

DIMENSIONS		TEMPERATURE	LOADS	WEIGHT
INCHES	MILLIMETERS	FAHRENHEIT CELSIUS	POUNDS NEWTONS	POUNDS KILOGRAMS