

STRUCTURE ATTACHMENTS

J BEAM HOOK

Figure 31

The Figure 31 is used in conjunction with our Figure 33 Machine Thread Eye Rod when it is necessary to support piping from the top flange of beam which allows the pipe to run close to the bottom of the beam where headroom is limited.

Material: Carbon Steel.

Finish: Plain, Painted, Electro-Galvanized.

Length equals the distance from the end of the threaded end to the inside of the hook.

Ordering: Specify rod size, length, thickness of flange, figure number, and finish. Made special to customer order. For Metric applications specify Figure M31.

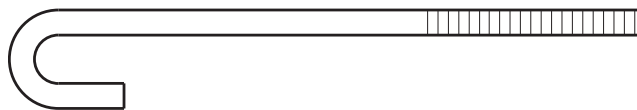


FIGURE 31 – J BEAM HOOK

SIZE	WEIGHT EACH RODWIDTH OF I BEAM FLANGE						
	4	5	6	7	8	10	12
A	102	127	152	178	203	254	305
$\frac{3}{8}$	0.19	0.22	0.25	0.28	0.32	0.38	0.44
M10	0.09	0.10	0.11	0.13	0.15	0.17	0.20
$\frac{1}{2}$	0.33	0.39	0.45	0.5	0.56	0.67	0.78
M12	0.15	0.18	0.20	0.23	0.25	0.30	0.35
$\frac{5}{8}$	0.52	0.61	0.70	0.78	0.87	1.02	1.22
M16	0.24	0.28	0.32	0.35	0.39	0.46	0.55
$\frac{3}{4}$	0.75	0.89	1.01	1.13	1.26	1.50	1.75
M20	0.34	0.40	0.46	0.51	0.57	0.68	0.79
$\frac{7}{8}$	1.02	1.20	1.36	1.53	1.71	2.04	2.39
M22	0.46	0.54	0.62	0.69	0.78	0.93	1.08

WALL BRACKET

Figure 49

The Figure 49 is designed for light duty applications.

Compliance: MSS-SP 69 Type 31.

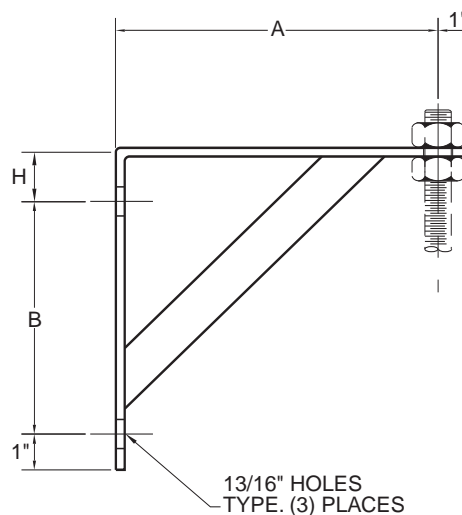
Finish: Plain, Painted, Electro-Galvanized, Hot-Dip Galvanized.

Ordering: Specify size, figure number, and finish.

For Metric applications specify Figure M49.

FIGURE 49 – BRACKET

SIZE	MAX LOAD	ROD SIZE	A	B	H	WGT. EACH
1	500	$\frac{3}{8}$	9	8 $\frac{1}{4}$	1 $\frac{1}{4}$	3.12
1	2224	M10	229	210	32	1.42
2	500	$\frac{3}{8}$	13	12 $\frac{1}{4}$	1 $\frac{1}{4}$	4.60
2	2224	M10	330	311	32	2.09
3	500	$\frac{3}{8}$	19	18 $\frac{3}{8}$	1 $\frac{3}{8}$	13.47
3	2224	M10	483	460	35	6.11



DIMENSIONS	TEMPERATURE	LOADS	WEIGHT
INCHES	FAHRENHEIT	POUNDS	POUNDS
MILLIMETERS	CELSIUS	NEWTONS	KILOGRAMS