

## ELONGATED CLEVIS HANGER

### Figure 100EL

The 100EL is designed for the suspension of insulated stationary pipe lines. It will accommodate 2 inches (51mm) of insulation up to 1½" (40mm) pipe, and 4 inches (102mm) of insulation for pipe 2" (50mm) and larger.

Hanger locking nut above the clevis must be tightened securely to assure proper hanger performance. The nuts are not included.

**Maximum Temperature:** Plain 650°F (343°C), Galvanized 450°F (232°C)

**Material:** Carbon Steel

**Finish:** Plain, Painted, Electro-Galvanized, Hot-dip Galvanized

**Approvals:** Federal Specification A-A-1192A Type 1, MSS-SP-58 Type 1, and BSPSS-BS3974.

**Ordering:** Specify figure number, pipe size and finish.

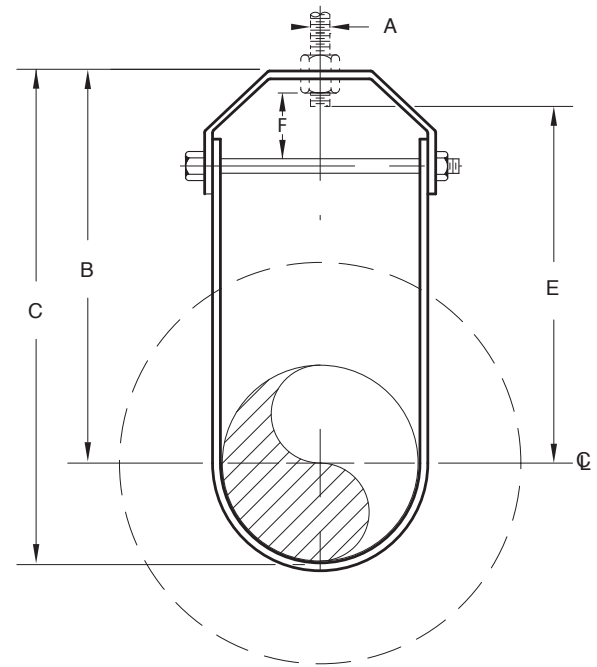


FIGURE 100EL – ELONGATED CLEVIS HANGER

PIPE SIZE	MAXIMUM LOAD	A	B	C	E	F	WEIGHT EACH
½	730	⅜	3¾	4¼	3½	⅝	0.66
15	3247	M10	95	108	89	16	0.30
¾	730	⅜	4¼	4⅞	3⅞	⅝	0.70
20	3247	M10	108	124	98	16	0.32
1	730	⅜	5⅛	5¾	4¾	1⅝	0.74
25	3247	M10	130	146	121	41	0.34
1¼	730	⅜	5⅜	6⅛	4⅞	1⅝	0.78
32	3247	M10	137	156	124	41	0.35
1½	730	⅜	5½	6⅜	5	1½	0.81
40	3247	M10	140	162	127	38	0.37
2	730	⅜	7⅝	8¾	7⅞	1⅝	0.88
50	3247	M10	194	222	181	41	0.40
2½	1350	½	7⅞	9¼	7¼	1⅝	1.83
65	6005	M12	200	235	184	29	0.83
3	1350	½	8⅛	9⅞	7½	1⅝	1.97
80	6005	M12	206	251	191	29	0.89
3½	1350	½	8⅜	10⅜	7¾	1¼	2.06
90	6005	M12	213	264	197	32	0.93
4	1430	⅝	9⅝	11⅞	8⅞	1¾	2.57
100	6361	M16	244	302	225	44	1.17
5	1430	⅝	10⅜	13⅜	9⅞	1⅞	3.00
125	6361	M16	264	333	244	48	1.36
6	1940	¾	10⅞	14⅞	10	1⅞	4.05
150	8630	M20	276	359	254	41	1.84
8	2000	¾	12⅝	16⅞	11⅞	2⅞	6.00
200	8897	M20	321	429	295	54	2.72
10	3600	⅞	13¼	18⅝	12⅞	2⅞	10.1
250	16014	M20	337	473	308	60	4.58
12	3800	⅞	15¼	22⅞	14⅞	2⅞	12.9
300	16904	M20	400	562	371	67	5.85

DIMENSIONS	TEMPERATURE	LOADS	WEIGHT
INCHES	FAHRENHEIT	POUNDS	POUNDS
MILLIMETERS	CELSIUS	NEWTONS	KILOGRAMS