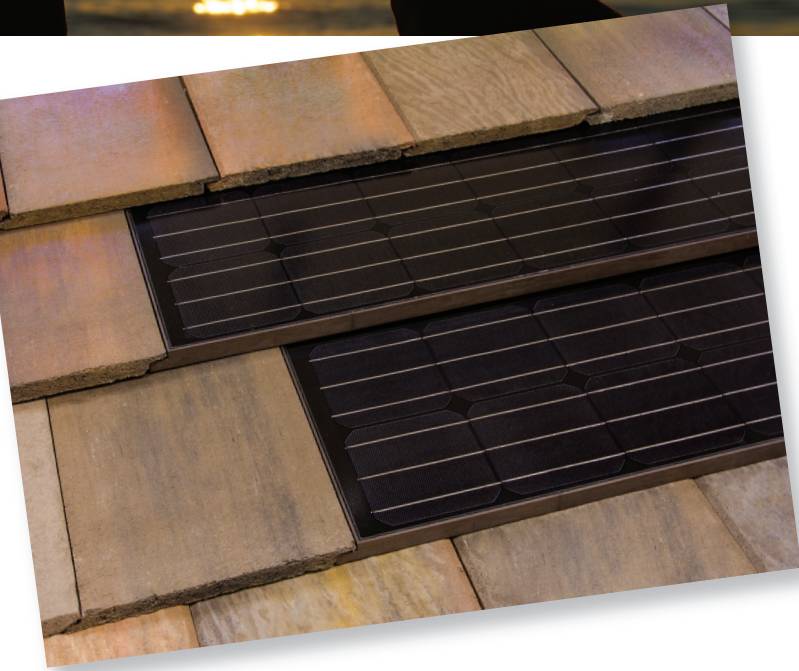


APOLLO

TILE II

PV Roofing System



A high efficiency monocrystalline solar tile designed for integration with many concrete tile roof products.

EACH KIT INCLUDES:

- 60 watt, high-efficiency monocrystalline modules
- Waterproofing membrane
- Fire-resistant underlayment
- Flashing accessory
- Starter strip
- Central string inverter
- Home run wiring
- Monitoring system (optional)

FEATURES AND BENEFITS:

- Efficiency: 14 high-efficiency monocrystalline silicon solar cells per module for a power rating of 60 watts per module.
- Low profile: The slim profile provides a clean integrated look that a rack mounted system cannot match.
- Integrates seamlessly with most flat, concrete tiles.
- Lightweight: No need for structural reinforcements or analysis. Each module weighs only 13 pounds or 307 pounds per 100 square feet.
- Load rating: Modules are rated to 250 pounds per square foot.
- Wind resistance rating: Apollo Tile II roofing systems achieve a 110 mph wind resistance rating.
- Water handling: Water channels and raised fastener locations improve the integrity of Apollo Tile II as a roofing system.
- Aesthetics: Brown (frame); black (cells) on black (backsheet) provides a greater aesthetic and visually blends with most concrete tile colors.



APOLLO

TILE II

PV Roofing System

ELECTRICAL CHARACTERISTICS

Standard Test Conditions: 25 C, 1kW/m², AM 1.5

Maximum Power (Pmax)	60W
Maximum Power Voltage (Vmp)	7.06 V
Maximum Power Current (Imp)	8.46 A
Open Circuit Voltage (Voc)	9.25 V
Short Circuit Current (Isc)	8.80 A
Maximum System Voltage	600 V
Series Fuse Rating	15 A
Performance Tolerance	± 3%
Conversion Efficiency	15.3%
Power Temp. Coefficient (Ptmp)	-0.45%/ °C
Voltage Temp. Coefficient (Vtoc)	-0.30%/ °C
Normal Operating Cell Temp. (NOCT)	53.5 °C
PTC Rating	50.9W

MECHANICAL CHARACTERISTICS

Outside Dimensions	47" x 17-1/4" x 1-1/4"
Weight	13 lbs (307 lbs per square)
Cell	Mono-Crystalline
No. of cells and connections	14 in series
Bypass Diode	1 per panel
Load Rating	250 lbs/sq ft
Wiring	14 AWG PV wire
Connectors	MC4-EVO 3

WARRANTY AND CERTIFICATIONS

Warranty	25 year limited power warranty 10 year limited product warranty
Certifications	Certified to UL 1703 by CSA UL 790 Class A fire rating ASTM D3161 Class F California CEC listed IEC 61215

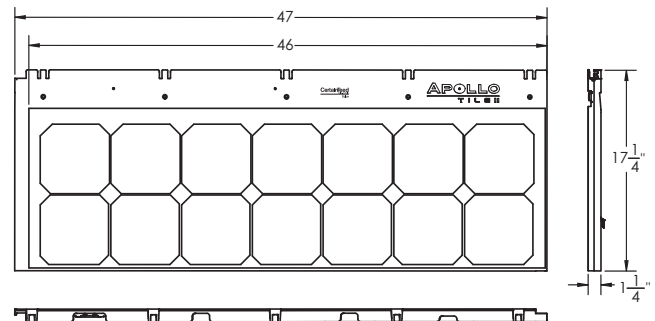


ABSOLUTE MAXIMUM RATINGS

Parameters	Rating	Unit
Operating Temperature	-40 to +90	°C
Storage Temperature	-40 to +90	°C
Dielectric Voltage Withstood	600 max	V-DC

DIMENSIONS

Exposed Area: 46" x 13.25"



Made in USA

ASK ABOUT ALL OF OUR OTHER CERTAINTEED® PRODUCTS AND SYSTEMS:

ROOFING • SIDING • TRIM • DECKING • RAILING • FENCE
GYPSUM • CEILINGS • INSULATION

www.certainteed.com <http://blog.certainteed.com>

CertainTeed Corporation
P.O. Box 860
Valley Forge, PA 19482

Professional: 877-596-0471
Consumer: 855-307-2880
Claims: 800-345-1145

© 8/14 CertainTeed Corporation, Printed in U.S.A.
Code No. 20-20-3348