

ADJUSTABLE SWIVEL RING

Figure 800

Designed for the support of non-insulated static pipe lines. The swivel nut is knurled to provide a gripping surface when adjusting the pipe elevation.

Compliance: Federal Specification A-A-1192A Type 10, MSS SP-69 Type 10, Underwriters Laboratory listed, and Factory Mutual approved (¾" through 8").

We also offer Swivel Ring hangers that are for Copper Tubing (Figure 800CT), PVC coated (Figure 800PVC), and for NFPA requirements (Figure 800FP), in this catalog.

Material: Carbon Steel.

Finish: Electro-Galvanized.

Ordering: Specify pipe size, figure number, and finish. For Metric applications specify Figure M800.

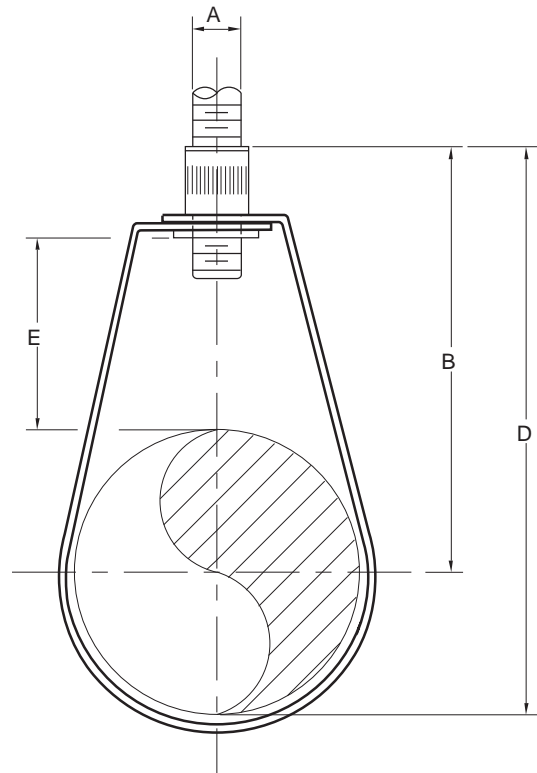


FIGURE 800 – ADJUSTABLE SWIVEL RING

PIPE SIZE	MAXIMUM LOAD	A	B	D	E	WEIGHT EACH
½	300	⅜	2¼	3⅞	1⅞	0.09
10	1335	M10	70	78	37	0.04
¾	300	⅜	2½	3⅞	1⅞	0.10
20	1335	M10	64	78	29	0.05
1	300	⅜	2½	3⅞	1	0.10
25	1335	M10	64	81	25	0.05
1¼	300	⅜	2⅞	3⅞	1⅞	0.10
32	1335	M10	71	90	27	0.05
1½	300	⅜	3⅞	3⅞	1⅞	0.11
40	1335	M10	79	98	27	0.05
2	300	⅜	3⅞	4⅞	1⅞	0.12
50	1335	M10	84	111	29	0.05
2½	600	½	3⅞	5⅞	1¼	0.32
65	2669	M12	94	130	32	0.15
3	600	½	4	5⅞	1⅞	0.35
80	2669	M12	102	149	29	0.16
3½	600	½	4⅞	6⅞	1⅞	0.39
90	2669	M12	110	168	38	0.18
4	1000	⅝	4⅞	7⅞	1¼	0.43
100	4448	M16	125	181	32	0.20
5	1000	⅝	5⅞	8⅞	1⅞	0.65
125	4448	M16	143	216	35	0.29
6	1250	¾	6⅞	10⅞	2	1.09
150	5560	M20	170	257	51	0.49
8	1800	⅞	8⅞	12⅞	2⅞	1.24
200	8007	M22	211	327	67	0.56

DIMENSIONS		TEMPERATURE	LOADS	WEIGHT
INCHES	FAHRENHEIT	POUNDS	POUNDS	
MILLIMETERS	CELSIUS	NEWTONS	KILOGRAMS	