

# ROD AND ROD ATTACHMENTS

## MACHINE THREAD RODS

**Figure 133** Right Hand Threads Both Ends

**Figure 133L** Right Hand and Left Hand Thread

Furnished with UNC threads this product is made from carbon steel.

**Maximum Loads** given are rated for up to 650°F (343°C.)

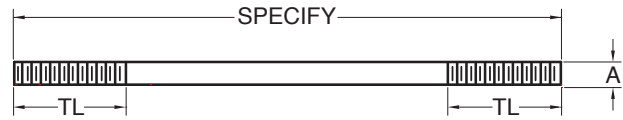
**Material:** Carbon Steel (Stainless Steel is Available)

**Finish:** Plain, Electro-galvanized, Hot-Dip Galvanized

**Ordering:** Specify material if other than carbon steel.

Figure number, finish, rod diameter, and length, and thread length; if other than standard.

**Note:** The use of galvanized coatings at temperatures above 450°F is at the discretion of the customer.



**FIGURE 133, 133L – MACHINE THREAD RODS**

A	$\frac{3}{8}$ M10	$\frac{1}{2}$ M12	$\frac{5}{8}$ M16	$\frac{3}{4}$ M20	$\frac{7}{8}$ M22	1 M24	$1\frac{1}{4}$ M30	$1\frac{1}{2}$ M36	$1\frac{3}{4}$ M42
THD. LGTH.	3 76	3 76	3 76	3 76	4 102	4 102	4 102	6 152	6 152
LOAD AT 650°F/343°C	730 3247	1350 6005	2160 9608	3230 14368	4480 19928	5900 26244	9500 42258	13800 61385	18600 82737

A	2 M48	$2\frac{1}{4}$ M56	$2\frac{1}{2}$ M64	$2\frac{3}{4}$ M72	3 M80	$3\frac{1}{4}$ M80	$3\frac{1}{2}$ M90	$3\frac{3}{4}$ M95	4 M100
THD. LGTH.	6 152	6 152	6 152	6 152	6 152	6 152	6 152	6 152	6 152
LOAD AT 650°F/343°C	24600 92078	32300 143677	39800 177038	49400 219741	60100 267337	71900 319826	84700 376763	98500 438148	114000 507095

## LIGHT DUTY WASHER PLATE

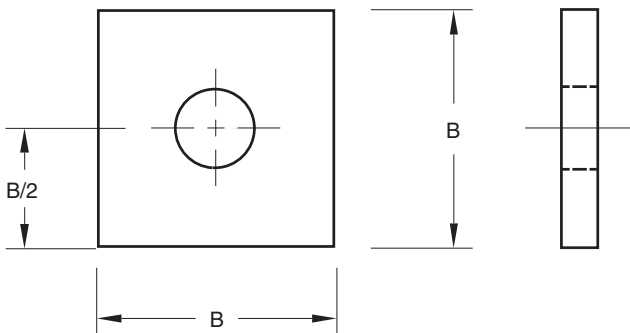
**Figure 102**

The Figure 102 is a light duty alternative to our Figure 260. Primarily used at the ends of rods instead of rod washers to gain more bearing surface.

**Material:** Carbon Steel.

**Finish:** Plain, Painted, Electro-Galvanized, Hot-Dip Galvanized.

**Ordering:** Specify figure number, rod size and finish.



**FIGURE 102 – LIGHT DUTY WASHER PLATE**

B	ROD SIZE - WEIGHT EACH			
	$\frac{1}{8}$ 3	$\frac{3}{16}$ 5	$\frac{1}{4}$ 6	$\frac{3}{8}$ 10
2	0.14	0.21	0.28	0.42
51	0.06	0.10	0.13	0.19
$2\frac{1}{2}$	N/A	N/A	0.44	0.66
64	N/A	N/A	0.20	0.30
3	0.32	0.48	0.64	0.95
76	0.15	0.22	0.29	0.43
4	0.57	0.83	1.13	1.70
102	0.26	0.38	0.51	0.77
5	0.89	1.33	1.77	2.66
127	0.40	0.60	0.80	1.21
6	1.28	1.91	2.55	3.83
152	0.58	0.87	1.16	1.74

DIMENSIONS	TEMPERATURE	LOADS	WEIGHT
INCHES	FAHRENHEIT	POUNDS	POUNDS
MILLIMETERS	CELSIUS	NEWTONS	KILOGRAMS