

PIPE ATTACHMENTS

ADJUSTABLE FLOOR SUPPORT

Figure 101U

The Figure 101U is used for support of piping from below without welding where there is no axial or transverse movement. It connects to a threaded pipe standard and base. Made special to customer order.

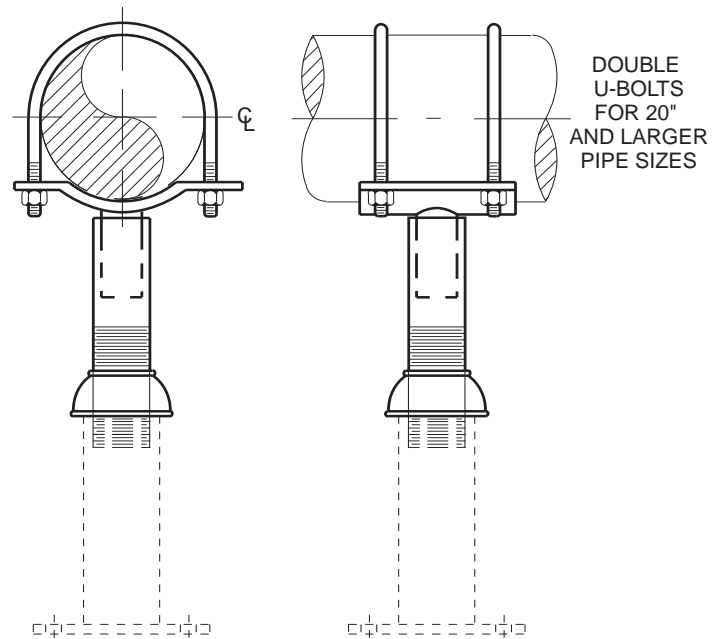
Rated loads are for up to 650°F (343°C).

Materials: Reducer is Cast Iron, Pipe saddle, nipple U-bolt are carbon steel.

Compliance: Federal Specification A-A-1192A (Type 38), MSS-SP-69 (Type 38).

Finish: Plain, Painted, Electro-Galvanized, Hot-Dip Galvanized.

Ordering: Specify pipe size, load, overall height, figure number, finish, and base plate bolting if needed. For Metric applications specify Figure M101U.



WIRE PIPE HOOKS

Figure 111

The Wire Pipe Hook is made of special hard drawn wire, extra Heavy gauge. The driving head is bent so as to make it easy to drive. The point is cut to a sharp nail point which will penetrate either hard or soft wood without bending. It can be used on pipes in various orientations.

Material: Steel.

Finish: Electro-Galvanized.

Ordering: Specify pipe size, figure number, and finish. For Metric applications specify Figure M111.

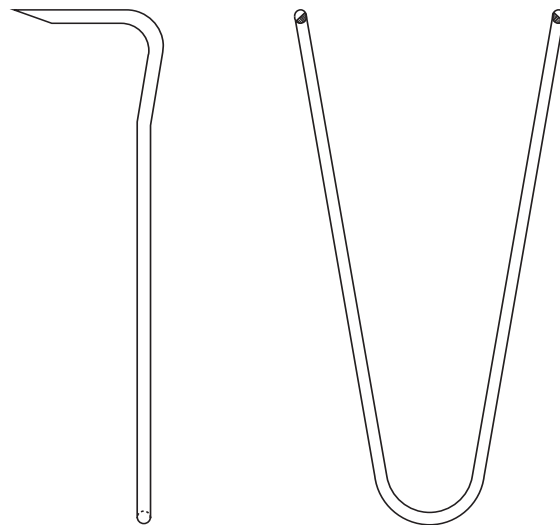


FIG. 111 – WIRE PIPE HOOKS

PIPE SIZE	WEIGHT PER 100 LENGTH OF HANGER				
	4	6	8	10	12
	102	152	203	254	305
½	0.06	0.08	0.10	0.12	0.14
15	0.03	0.04	0.05	0.05	0.06
¾	0.06	0.08	0.10	0.12	0.14
20	0.03	0.04	0.05	0.05	0.06
1	0.06	0.08	0.10	0.12	0.14
25	0.03	0.04	0.05	0.05	0.06
1¼	0.08	0.10	0.12	0.14	0.16
32	0.04	0.05	0.05	0.06	0.07
1½	0.08	0.10	0.12	0.14	0.16
40	0.04	0.05	0.05	0.06	0.07
2		0.10	0.12	0.14	0.16
50		0.05	0.05	0.06	0.07

DIMENSIONS	TEMPERATURE	LOADS	WEIGHT
INCHES	FAHRENHEIT	POUNDS	POUNDS
MILLIMETERS	CELSIUS	NEWTONS	KILOGRAMS