

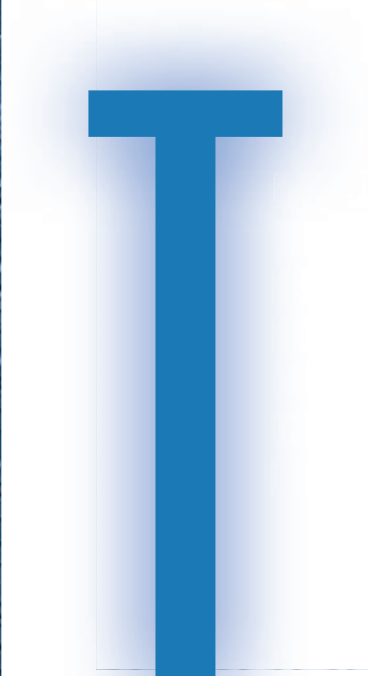
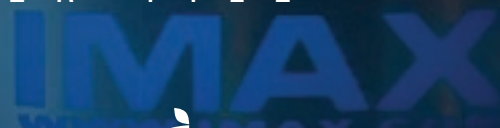
flextones®

T E X T U R E D R U B B E R T I L E

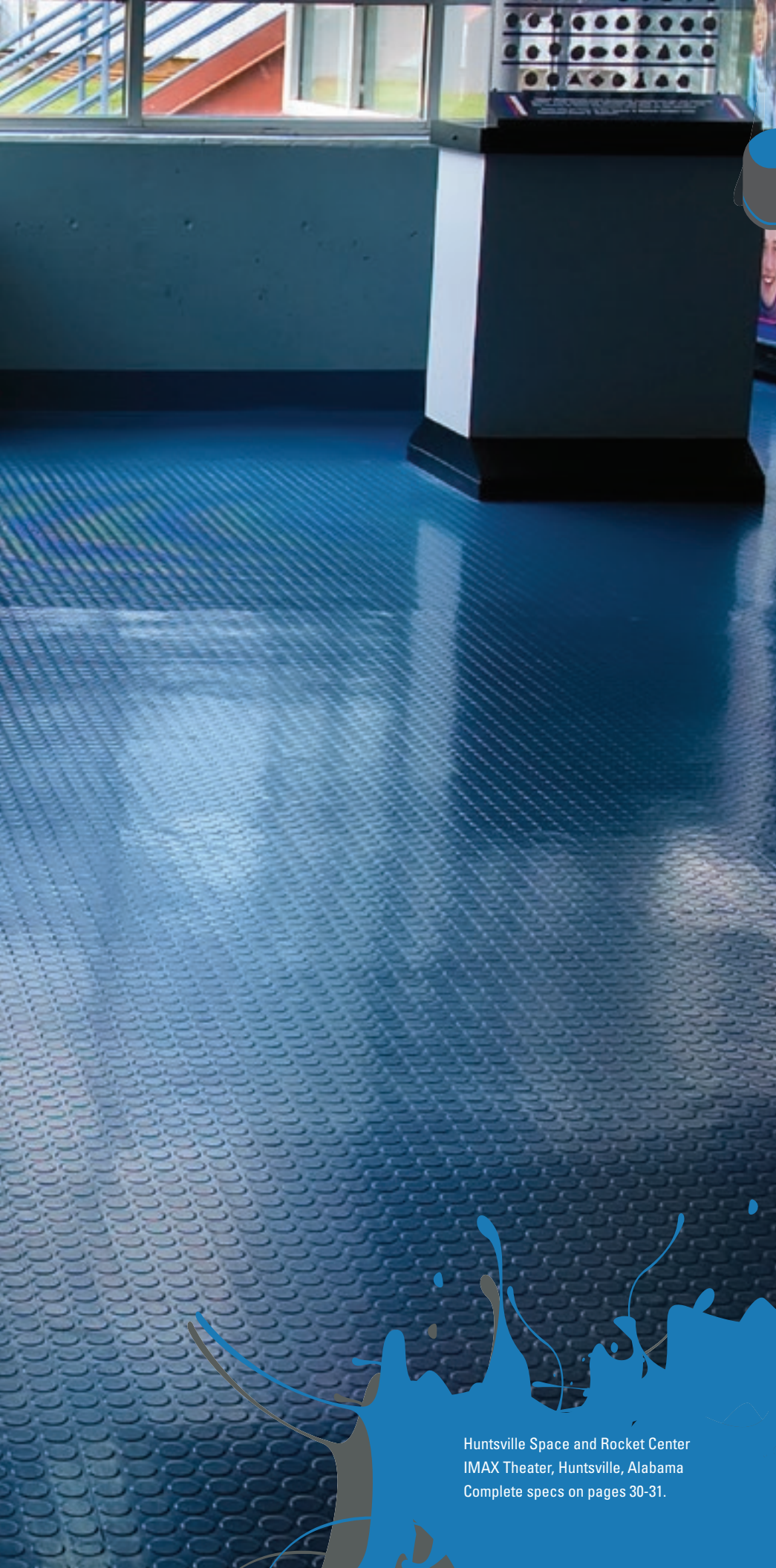


- 1 **PVC free rubber tiles**
- 2 **Homogeneous color**
- 3 **Reduces leg fatigue and noise**
- 4 **FlexOne pricing**
- 5 **Natural resistance to bacteria and fungi in accordance with ASTM G 21**

 EnviroFlex™ product. May contribute to one or more LEED® credits.



used and textured patterns allow
and water to drain off of the walking
ce, increasing traction and improving
resistance. Our low profile versions are
for areas with small-wheeled vehicular
, such as retail stores, healthcare
es, airport terminals and more.



FLEXCO[®]

innovative design. flooring performance.

updated palette

flextones[®]
COLORS

Black Dahlia 01	Bark 02	Charcoal 03
Cobblestone 06	Ginger 07	Autumn 08
Blue 013	Medium Gray 014	Neutral 020
Almond 022	Pebble 023	Stone 024
Light Gray 025	Dune 032	Barley 034
Gray 036	Dark Beige 037	Outer Banks 038
Milk Chocolate 056	Blue Shadow 058	Cappuccino 065
Black Brown 071	Chocolate 072	Seashell 074
Umber 078	Sierra Red 080	Nickel 090
Basil 097	Wheat 098	Midnight Blue 099

Huntsville Space and Rocket Center
IMAX Theater, Huntsville, Alabama
Complete specs on pages 30-31.