

LIGHT DUTY CLEVIS HANGER

Figure 200

Designed to support non-insulated, stationary lines from above allowing for approximately 1" to 1½" of vertical adjustment after the pipe is in place. The lower nut (not furnished) adjusts the pipe line to the proper elevation, the top nut (not furnished) prevents loosening due to vibration, and must be tightened securely to assure proper hanger performance.

Material: Carbon Steel.

Compliance: Federal Specification A-A-1192A Type 1, MSS-SP-69 Type 1.

Finish: Plain, Painted, Electro-Galvanized.

Ordering: Specify pipe size, figure number, and finish. For Metric applications specify Figure M200.

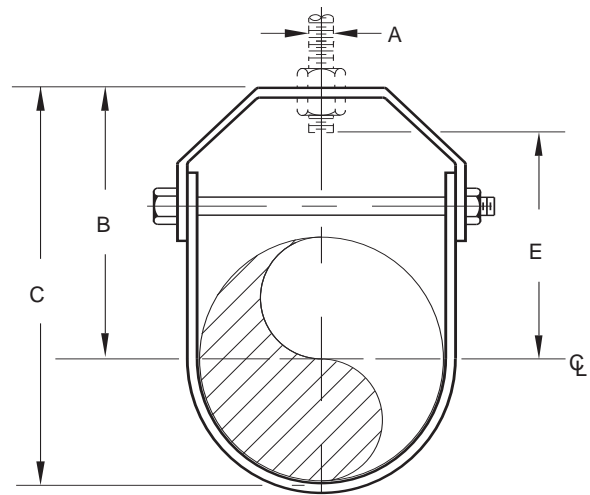


FIGURE 200 – LIGHT DUTY CLEVIS HANGER

PIPE SIZE	MAXIMUM LOAD	A	B	C	E	WEIGHT EACH
½	150	¾	1⅞	2¾	¾	0.27
15	667	M10	48	60	19	0.12
¾	250	¾	2¾	2⅞	1½	0.29
20	1112	M10	60	73	38	0.13
1	250	¾	2¾	3⅞	1⅞	0.33
25	1112	M10	60	79	41	0.15
1¼	250	¾	2⅞	3¼	2⅞	0.36
32	1112	M10	73	95	54	0.16
1½	250	¾	3	4	2¼	0.42
40	1112	M10	76	102	57	0.19
2	250	¾	3½	4¾	2¾	0.52
50	1112	M10	89	121	70	0.24
2½	350	½	4	5½	2⅞	0.81
65	1557	M12	102	140	73	0.37
3	350	½	4¼	6⅞	3¼	0.90
80	1557	M12	108	156	83	0.41
3½	350	½	4⅞	6½	3⅞	0.99
90	1557	M12	111	165	86	0.45
4	400	¾	5½	7⅞	4⅞	1.40
100	1779	M16	140	200	111	0.64

DIMENSIONS		TEMPERATURE	LOADS	WEIGHT
INCHES	FAHRENHEIT	POUNDS	POUNDS	
MILLIMETERS	CELSIUS	NEWTONS	KILOGRAMS	