

STRUCTURE ATTACHMENTS

CHANNEL ASSEMBLY

Figure 371

The Figure 371 Channel Assembly is composed of two channels back to back with a spacer welded on each end. Washer plates are included and shipped loose.

Material: Steel.

Finish: Plain, Painted, Hot-Dip Galvanized.

Ordering: Specify channel size, rod diameter, dimension “A”, figure number, and finish. For Metric applications specify Figure M371. Made special to customer order.

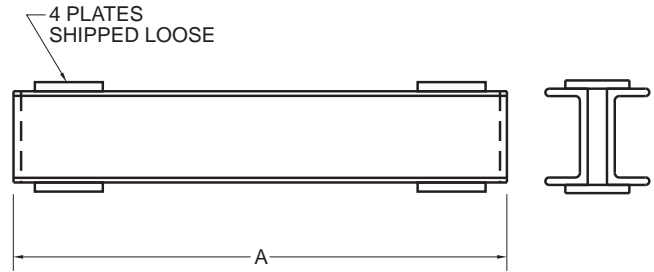


FIGURE 371 – CHANNEL ASSEMBLY

CHANNEL SIZE	ALLOWABLE CONCENTRATED LOAD AT CENTER OF SPAN F/S 5							
	12 305	18 457	24 610	30 762	36 914	42 1067	60 1524	72 1829
3C 4.1	10000 44484	6800 30249	5100 22687	4100 18238	3400 15125	2900 12900	2000 8897	1700 7562
4C 5.4	17500 77847	11600 51601	8800 39146	7000 31139	5800 25801	5000 22242	3500 15569	2900 12900
5C 6.7	27600 122776	18400 81851	13800 61388	11000 48932	9200 40925	7900 35142	5500 24466	4600 20463
6C 8.2	39500 175712	26300 116993	19800 88078	15800 70285	13200 58719	11300 50267	7900 35142	6600 29359
8C 11.5	74500 331406	49600 220641	37300 165925	29800 132562	24800 110320	21300 94751	14900 66281	12400 55160
12C 20.7			98500 438167	78800 350534	65600 291815	56300 250445	39400 175267	32800 145907

ANGLE IRON SUPPORT

Figure 374

The Figure 374 Angle Iron Support is used to form a trapeze when supporting more than one pipeline at the same time.

Material: Steel.

Finish: Plain, Painted, Hot-Dip Galvanized.

Ordering: Specify size of angle, dimension “A”, center to center of drop rods, size of drop rods, figure number and finish. Made special to customer order. For Metric applications specify Figure M374.

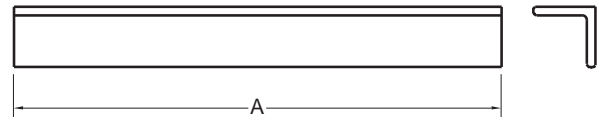


FIGURE 374 – ANGLE IRON SUPPORT

ANGLE SIZE	ALLOWABLE CONCENTRATED LOAD AT CENTER OF SPAN								
	6 152	12 305	18 457	24 610	30 762	36 914	42 1067	48 1219	72 1829
1 x 1 x ¼	670 2980	330 1468	220 979	160 712	130 578	100 445			
1½ x 1½ x ¼	1000 4448	500 2224	350 1557	250 1112	200 890				
2 x 2 x ¼	1940 8630	1470 6539	980 4359	730 3247	580 2580	480 2135	410 1824	355 1579	225 1001
2 x 2 x ⅜	2750 12233	1350 6005	925 4115	775 3448	550 2447				
2½ x 2½ x ¼	1980 8808	1800 8007	1570 6984	1170 5205	935 4159	775 3448	660 2936	575 2558	370 1646
3 x 3 x ¼	1840 8185	1740 7740	1640 7295	1550 6895	1370 6094	1140 5071	970 4315	845 3759	545 2424
3 x 3 x ½		4350 19351	2925 13012	2175 9675	1750 7785				

DIMENSIONS	TEMPERATURE	LOADS	WEIGHT
INCHES	FAHRENHEIT	POUNDS	POUNDS
MILLIMETERS	CELSIUS	NEWTONS	KILOGRAMS