

PIPE ATTACHMENTS

CLEVIS HANGER FOR DUCTILE IRON AND A.W.W.A. CAST IRON PIPE

Figure 100DI

Designed to support non-insulated, stationary ductile iron and A.W.W.A. cast iron lines from above allowing for approximately 1" to 1½" of vertical adjustment after the pipe is in place. The lower nut (not furnished) adjusts the pipe line to the proper elevation, the top nut (not furnished) prevents loosening due to vibration, and must be tightened securely to assure proper hanger performance.

Material: Carbon Steel.

Compliance: MSS-SP-69 Type 1, A-A-1192A Type 1.

Finish: Plain, Painted, Electro-Galvanized, Hot-Dip Galvanized.

Ordering: Specify pipe size, figure number, and finish. For Metric applications specify Figure M100DI.

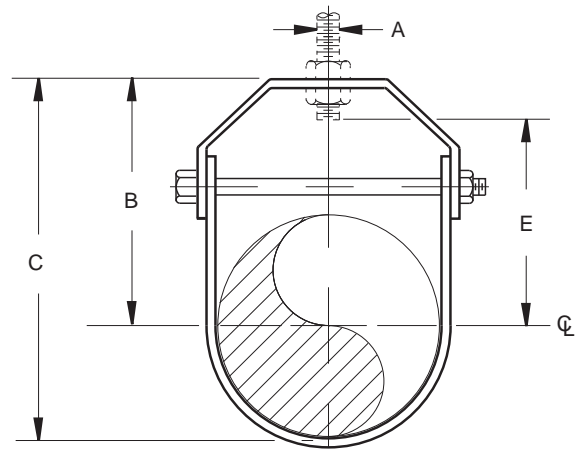


FIGURE 100DI – CLEVIS HANGER FOR DUCTILE IRON PIPE

PIPE SIZE	MAXIMUM LOAD	A	B	C	ROD TAKE OUT E	WEIGHT EACH
4	1430	5/8	5 3/4	8 3/8	4 3/8	2.08
150	6361	M16	146	206	111	0.94
6	1940	3/4	7	10 3/8	5 1/2	2.78
200	8630	M20	178	264	140	1.26
8	2000	3/4	9 3/4	13 3/4	7 3/4	4.47
250	8897	M20	235	349	197	2.03
10	3600	7/8	10 3/4	15 3/4	8 3/8	8.87
300	16014	M22	260	400	219	4.02
12	3800	7/8	12 3/8	19 1/4	11	12.0
350	16904	M22	321	489	279	5.46
14	4200	1	14 3/8	21 3/4	12 3/4	15.2
400	18683	M24	359	552	311	6.87
16	4800	1	14 3/8	23 3/8	13	23.6
450	21352	M24	378	600	330	10.7
18	4800	1	17 3/4	27 3/4	15 3/4	25.9
500	21352	M24	451	705	400	11.7
20	4800	1 1/4	18 3/8	29 1/2	16 1/2	44.3
600	21352	M30	476	749	419	20.1
24	4800	1 1/4	21 1/8	34 3/4	19 1/2	53.5
700	21352	M30	556	883	495	24.2

DIMENSIONS	TEMPERATURE	LOADS	WEIGHT
INCHES	FAHRENHEIT	POUNDS	POUNDS
MILLIMETERS	CELSIUS	NEWTONS	KILOGRAMS