



BONNEY FORGE

INTEGRAL FLANGED VALVES- CHECK TYPE- BOLTED BONNET- FULL PORT

2500 LB.

Design construction:

ASME B16.34 - BS 5352

Full Port Type

Testing according to API 598

Marking MSS SP25

Body Bonnet Gasket ring joint type

Spiral wound type gasket on request

Spring available on request for Piston and Ball Check Valves

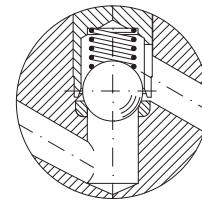
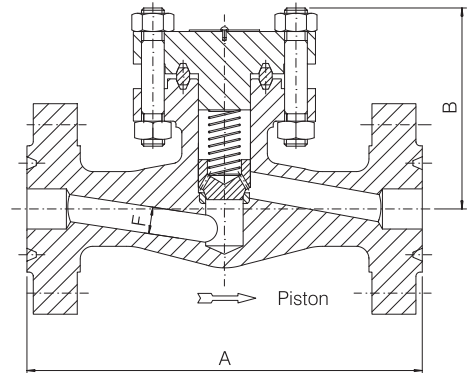
Integral body flanges

Face to face according to ASME B16.10

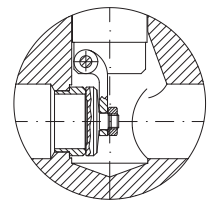
Flanges according to ASME B16.5

Ratings:

- carbon steel class 2500 6170 psig @ 100°F
425 bar + 38°C



Ball



Swing

FULL PORT – FIG. 25FR 40, 25FR 50, 25FR 60							
	SIZE		1/2	3/4	1	1 1/2	2
		inch mm	15	20	25	40	50
2500 LB.	A	inch mm	10.39 264	10.75 273	12.13 308	15.25 387,5	17.87 454
	B	inch mm	5.04 128	5.12 130	5.98 152	7.40 188	7.48 190
	F Piston/ F Ball	inch mm	.43 11	.57 14,5	.75 19	1.10 28	1.38 35
	F Swing	inch mm	.45 11,5	.59 15	.76 19,5	1.10 28	1.38 35
	Weight	lb. kg	31.5 14,3	35.25 16	57.75 26,3	119 54	123.25 56
	GASKET		R16	R16	R16	R19	R20*