

LIGHT WELDED STEEL BRACKET

Figure 69

The Figure 69 is designed to support up to 6" pipe. This bracket is for installation to walls as shown or inverted, and may require a backing plate. Holes for up to 3/4" rods are located at each end of the bracket to allow for use in either orientation. The Figure 78 Steel Bracket Clip can be attached to the Figure 69 to support piping 3 1/2" or smaller. Please see the Figure 79 for more information.

Compliance: A-A-1192A Type 31, MSS-SP 69 Type 31.

Finish: Plain, Painted, Hot-Dip Galvanized.

Ordering: Specify size number, figure number, and finish. For Metric applications specify Figure M69 and M79 as required.

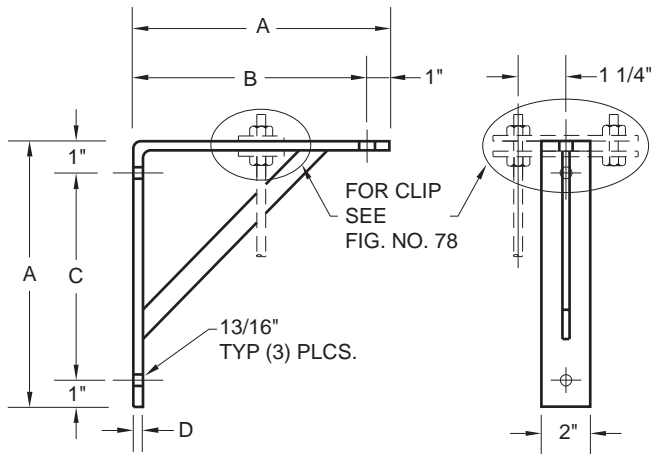


FIGURE 69 – LIGHT WELDED STEEL BRACKET

SIZE	MAX LOAD	A	B	C	WGT. EACH
1	750	9	8	6½	6.99
1	3336	229	203	165	3.17
2	750	13	12	10½	10.10
2	3336	330	305	267	4.60
3	750	19	18	16½	10.50
3	3336	483	457	419	4.74

STEEL BRACKET CLIP

Figure 78

The Figure 78 Clip can be used to support piping 3 1/2" or smaller from the horizontal member of a Figure 69 Steel Bracket. The Clip is composed of two steel plates and one bolt and nut.

Material: Carbon Steel.

Finish: Plain, Hot-Dip Galvanized.

Ordering: Specify size number, figure number, and finish. For Metric applications Specify Figure M78.

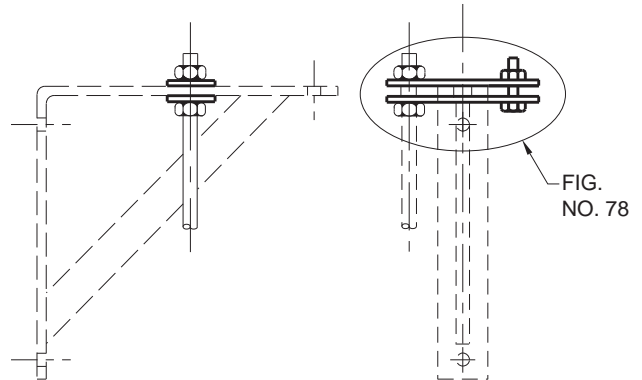


FIGURE 78 – STEEL BRACKET CLIP

SIZE	ROD SIZE	MAX LOAD	WEIGHT EACH
1	3/8	610	0.80
1	M10	2714	0.36
2	1/2	750	1.24
2	M12	3336	0.56

DIMENSIONS		TEMPERATURE	LOADS	WEIGHT
INCHES	FAHRENHEIT	POUNDS	POUNDS	
MILLIMETERS	CELSIUS	NEWTONS	KILOGRAMS	