

BRACKET

Figure 83

This bracket is used on light duty applications. Dimension "B" can be changed upon request.

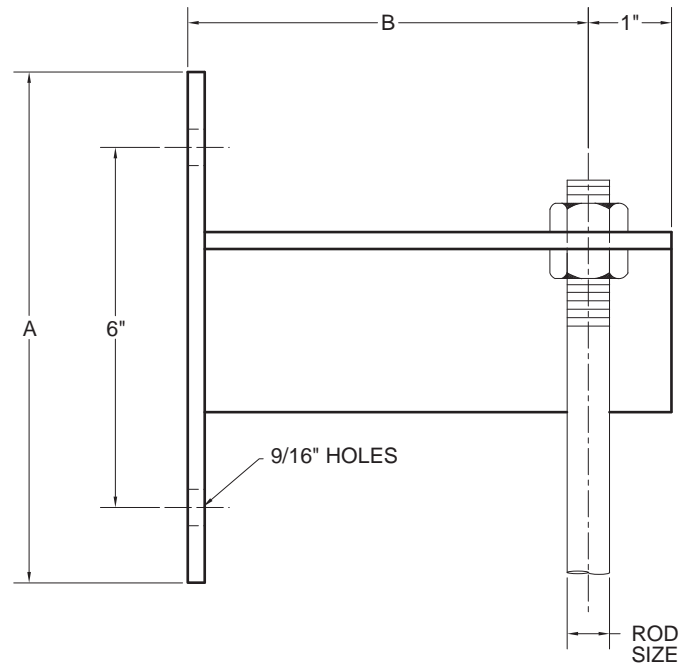
Material: Steel.

Finish: Plain, Electro-Galvanized, Hot-Dip Galvanized.

Ordering: Specify bracket size, figure number, and finish.

FIGURE 83 – BRACKET

SIZE	MAX. LOAD	A	B	MAX. ROD SIZE	WGT. EACH
1	610	8	4	½	2.7
1	2714	203	102	M12	1.2
2	610	8	6	½	3.2
2	2714	203	152	M12	1.5
3	610	8	9	½	4.4
3	2714	203	229	M12	2.0



MEDIUM WELDED STEEL BRACKET

Figure 84

The Figure 84 is designed to support pipe from either above or below. Slotted construction allows for drop rod use along the length of the bracket. This bracket is for bolted installation to walls and may require a backing plate. Special steel brackets can be fabricated to customers loads and/or dimensions.

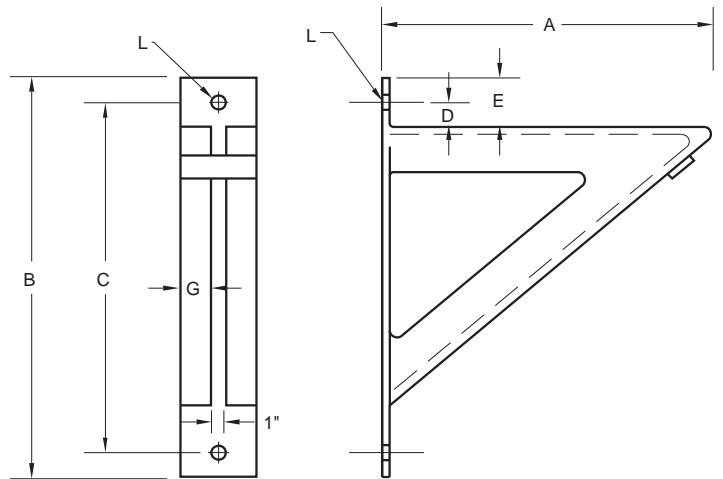
Compliance: A-A-1192A Type 32, MSS-SP 69 Type 32.

Finish: Plain, Painted, Hot-Dip Galvanized.

Ordering: Specify size number, figure number, and finish. For Metric applications specify Figure M84.

FIGURE 84 – MEDIUM WELDED STEEL BRACKET

SIZE	MAX LOAD	A	B	C	D	E	G	L	WGT EACH
0	1500	12	18	15½	1¼	2½	1¼	1⅜	15.50
0	6673	305	457	394	32	64	32	21	7.03
1	1500	18	24	21½	1¼	2½	1½	1⅜	24.70
1	6673	457	610	546	32	64	38	21	11.20
2	1500	24	30	27½	1¼	2½	1½	1⅜	37.70
2	6673	610	762	699	32	64	38	21	17.10



DIMENSIONS		TEMPERATURE	LOADS	WEIGHT
INCHES	FAHRENHEIT	POUNDS	POUNDS	
MILLIMETERS	CELSIUS	NEWTONS	KILOGRAMS	