

WEDGE ANCHOR

Figure 1309

The Figure 1309 is used for bolting components to concrete structures. Allows for through drilling applications.

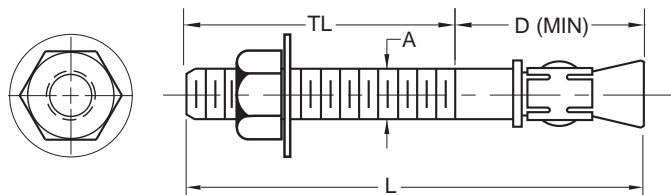
INSTALLATION: Drill holes in concrete deeper than the required embedment. Drive the bolt into the hole so that at least six threads are below the top surface of the fixture. Tighten the nut with the washer in place. The resistance will increase after the third or fourth turn.

NOTE: Loads listed are based on a safety factor of four when installed in accordance with manufacturer's recommendations. Contact us for higher loads are allowed due to increased embedment.

Material: High Tensile Steel. (Also available Galvanized or Stainless Steel).

Finish: Zinc Plated.

Ordering: Specify figure number, diameter and length. For Metric applications specify Figure M1309.



BOLT DIA.	4000 PSI CONCRETE SAFE WORKING LOAD		L	MIN. D(Embd)	MAX THCKNSS OF MAT'L TO BE FASTENED	T _L
	TENSION	SHEAR				
1/4 6	390 1735	450 2002	1 3/4	1 1/8 29	3/8	1 1/8 29
			44		10	
			2 1/4		7/8	
			57		22	
			3 1/4		1 1/8	
3/8 10	805 3581	1000 4448	2 1/4	1 1/2 38	3/8	1 1/2 38
			57		10	
			2 3/4		7/8	
			70		22	
			3		1 1/8	
1/2 13	1350 6005	1725 7673	2 3/4	2 1/4 57	1/8	2 1/4 57
			70		3	
			3 3/4		1	
			95		25	
			4 1/4		1 1/2	
5/8 16	2000 8897	3120 13879	5 1/2	2 3/4 70	2 3/4	2 3/4 70
			140		70	
			7		4 1/4	
			178		108	
			3 1/2		1/8	
3/4 19	2500 11121	4500 20018	89	3 1/4 83	3	1 1/2 38
			4 1/4		7/8	
			108		22	
			5		1 5/8	
			127		41	
7/8 22	3400 15125	6300 28025	6	3 3/4 95	2 5/8	2 1/2 64
			152		67	
			7		3 5/8	
			178		92	
			8 1/2		5 1/8	
1 25	5200 23132	7100 31584	10	4 1/2 114	130	2 1/2 64
			216		130	
			10		6	
			254		159	
			12		8	
1 1/4 32	6800 30249	11000 48932	305	6 140	168	3 1/2 89
			6		1 3/8	
			152		35	
			9		13	
			229		86	
1 1/2 35	8500 37845	12000 52920	12	7 175	86	4 100
			305		137	
			10		5 3/8	
			254		137	
			6		1 1/2	