

Series 92/94 Local Remote Stations



PK-100

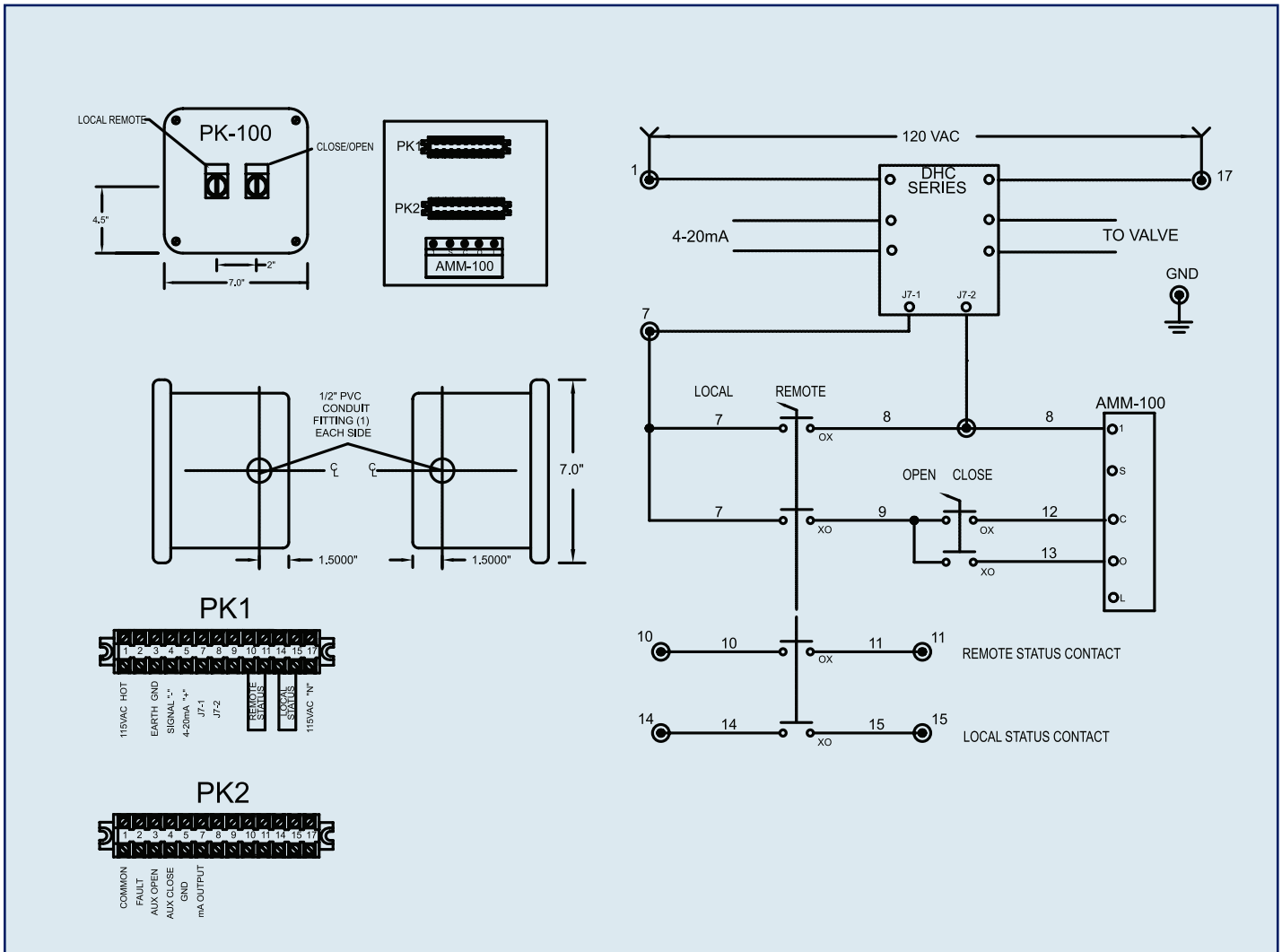
PK-100 is to be used in conjunction with Series 92 or 94, AC powered and DHC-Series positioner card.

Standard Features

- Weatherproof enclosure constructed of fiberglass polyester
- Stainless steel trim
- Captive cover gasket
- Captive cover screws
- Two position selector switch (open and close)
- Two position selector switch (local/remote)
- 40° F - 266° F temperature range

Options

- Explosion proof enclosure
- 316 stainless steel enclosure
- Contact factory for specific applications



Note:

1. Local remote station is not close coupled to actuator. Field wiring of local remote station to actuator is to be performed by others.