

PIPE ATTACHMENTS

SHORT U-BOLT

Figure 222

The Figure 222 is recommended for use as a support for piping where the tangent lengths are too long to use a Figure 283. It is supplied with two hex nuts.

Material: Carbon Steel.

Compliance: Federal Specification A-A-1192A Type 2, MSS-SP69 Type 24, and BSPSS-BS3974.

Finish: Plain, Electro-Galvanized, or Hot-Dip Galvanized (Rod Size 1/4" cannot be Hot-Dip Galvanized).

Ordering: Specify pipe size, figure number, and finish. For Metric applications specify M222.

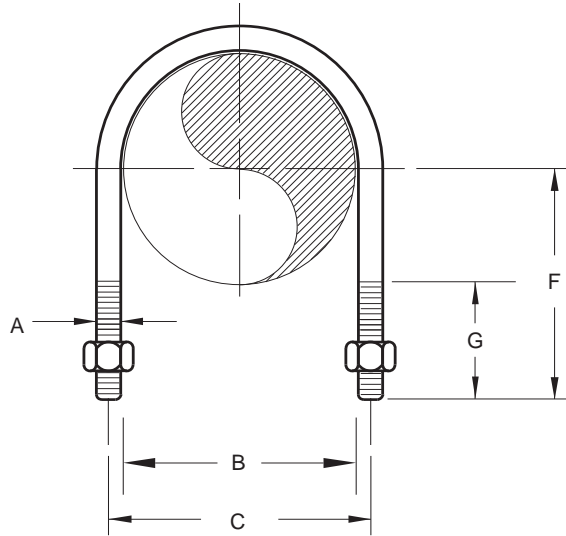


FIGURE 222 - SHORT U-BOLT

PIPE SIZE	MAX LOAD 650° F / 343° C	STOCK SIZE A	B	C	F	G	WEIGHT EACH
1/2	480	1/4	7/8	1 1/4	1 1/4	3/4	0.08
15	2135	M6	22	29	32	19	0.04
3/4	480	1/4	1 1/4	1 1/4	1 1/4	3/4	0.09
20	2135	M6	29	35	35	19	0.04
1	480	1/4	1 3/8	1 3/8	1 3/8	3/4	0.10
25	2135	M6	35	41	35	19	0.05
1 1/2	1200	3/8	7/8	1 1/4	1 1/4	3/4	0.08
15	5338	M10	22	32	32	19	0.04
3/4	1200	3/8	1 1/4	1 1/2	1 1/4	3/4	0.09
20	5338	M10	29	38	35	19	0.04
1	1200	3/8	1 3/8	1 3/8	1 3/8	3/4	0.10
25	5338	M10	35	44	35	19	0.05
1 1/4	1200	3/8	1 1/4	2 1/4	1 1/4	1	0.27
32	5338	M10	44	54	44	25	0.12
1 1/2	1200	3/8	2	2 3/8	1 1/4	1	0.30
40	5338	M10	51	60	48	25	0.14
2	1200	3/8	2 1/2	2 3/4	2 1/4	1	0.34
50	5338	M10	64	73	57	25	0.15
2 1/2	2200	1/2	3	3 1/2	2 3/4	1 1/4	0.72
65	9786	M12	76	89	67	32	0.33
3	2200	1/2	3 3/8	4 1/4	3 3/4	1 1/4	0.80
80	9786	M12	92	105	83	32	0.36
3 1/2	2200	1/2	4 1/4	4 3/4	3 1/2	1 1/4	0.95
90	9786	M12	105	117	89	32	0.43
4	2200	1/2	4 3/8	5 1/4	3 1/2	1 1/4	0.95
100	9786	M12	117	130	89	32	0.43
5	2200	1/2	5	6	4 1/4	1 1/4	1.13
125	9786	M12	143	156	108	32	0.51
6	3600	3/4	6 1/4	7 1/4	4 3/4	1 1/4	1.24
150	16014	M16	171	187	121	32	0.56
8	3600	3/4	8 3/4	9 3/4	5 3/4	1 1/4	2.10
200	16014	M16	222	238	137	32	0.95
10	5400	3/4	10 3/4	11 3/4	7	1 1/2	2.68
250	24021	M20	276	295	178	38	1.22
12	7500	3/4	12 3/4	13 3/4	7 3/4	1 1/2	3.20
300	33363	M22	327	349	200	38	1.45

DIMENSIONS	TEMPERATURE	LOADS	WEIGHT
INCHES	FAHRENHEIT	POUNDS	POUNDS
MILLIMETERS	CELSIUS	NEWTONS	KILOGRAMS