

STEEL BEAM CLAMP WITH WELDLESS EYENUT

Figure 297

The Figure 297 beam clamp with eyenut is used when welding to the structure is prohibited for supports where some movement is expected. The clamping effect is produced by the “ice tong” action of the arms and is locked in place by the through bolt located just under the beam flange.

Material: Carbon Steel with Forged Steel Eyenut.

Compliance: Federal Specification A-A-1192A Type 28, MSS-SP-69 Type 28 and BSPSS-BS3974.

Finish: Plain, Painted, Hot-Dip Galvanized.

Ordering: Specify figure number, rod size, clamp number and finish. For Metric applications specify Figure M297.

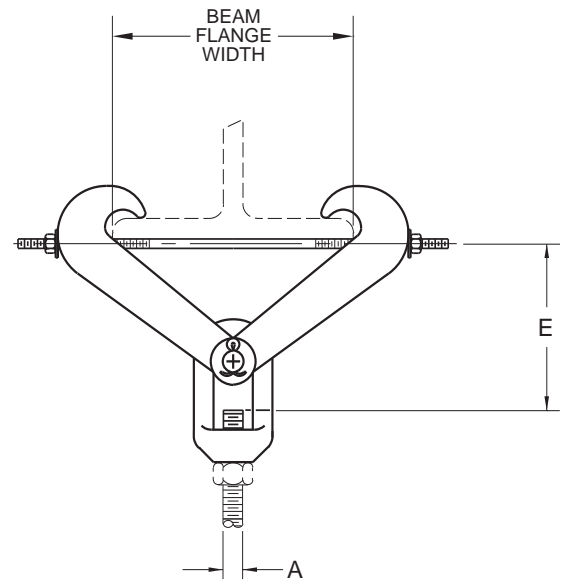


FIGURE 297 – STEEL BEAM CLAMP WITH WELDLESS EYENUT

CLAMP SIZE	MAXIMUM LOAD	MAXIMUM ROD SIZE A	BEAM WIDTH	BODY SIZE	MAXIMUM FLANGE THICKNESS	WEIGHT EACH
1	2710	3/4	3 - 8	A	0.6	5.5
	68834	M20	76 - 203		15	2.5
2	4960	1	3 - 8	A	0.6	5.5
	125984	M24	76 - 203		15	2.5
3	4960	1	4 - 11	B	0.6	9.0
	125984	M24	102 - 279		15	4.1
4	4960	1	4 - 12	C	1.03	29.0
	125984	M24	102 - 305		26	13.2
5	4960	1	11 - 15	D	1.03	33.3
	125984	M24	279 - 381		26	15.1
6	11500	1 1/2	4 - 12	C	1.03	29.0
	292100	M36	102 - 305		26	13.2
7	11500	1 1/2	11 - 15	D	1.03	33.3
	292100	M36	279 - 381		26	15.1
8	11500	2	4 - 12	C	1.03	29.0
	292100	M48	102 - 305		26	13.2

** Based on the allowable stresses shown in ANSI Code for Pressure Piping

CLAMP SIZE	BODY SIZE	ROD TAKEOUT "E" FOR WIDTH OF BEAM												
		3	4	5	6	7	8	9	10	11	12	13	14	15
1	A	5 5/16	5 1/8	5	4 13/16	4 3/8	3 15/16							
1	A	132	130	127	122	111	100							
2	A	5 5/16	5 1/8	5	4 13/16	4 3/8	3 15/16							
2	A	132	130	127	122	111	100							
3	B		8 1/4	8 1/8	8 1/8	7 7/8	7 3/4	7 1/2	7	6 1/2				
3	B		210	206	206	200	197	187	178	165				
4	C		8 5/8	8 1/8	8 1/2	8 3/8	8 1/8	7 7/8	7 3/8	7	6 3/4			
4	C		219	219	216	213	206	200	194	178	171			
5	D									9 1/2	9 1/4	8 7/8	8 3/8	7 7/8
5	D									241	235	225	213	200
6	C		8 5/8	8 1/8	8 1/2	8 3/8	8 1/8	7 7/8	7 3/8	7	6 3/4			
6	C		219	219	216	213	206	200	194	178	171			
7	D									9 3/4	9 1/2	9 1/8	8 3/4	8 1/8
7	D									248	241	232	222	206
8	C		11 5/8	11 1/2	11 1/2	11 3/8	11 1/8	10 7/8	10 3/4	10 1/2	10			
8	C		295	292	292	289	283	276	273	267	254			

DIMENSIONS		TEMPERATURE	LOADS	WEIGHT
INCHES	FAHRENHEIT	POUNDS	POUNDS	
MILLIMETERS	CELSIUS	NEWTONS	KILOGRAMS	