

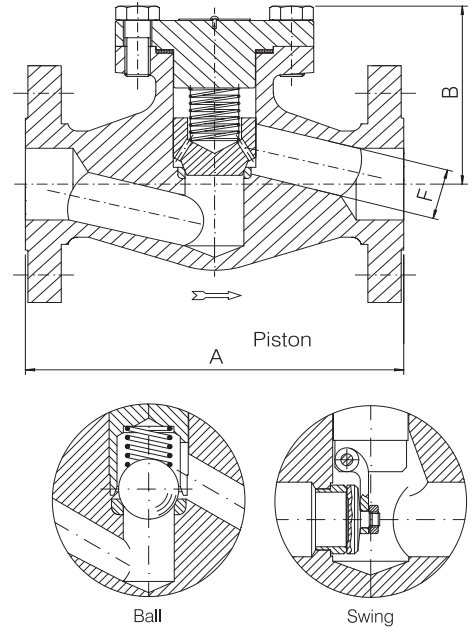
# **B** INTEGRAL FLANGED VALVES- CHECK TYPE- BOLTED BONNET- FULL PORT

BONNEY FORGE

**1500 LB.**

**Design construction:**

ASME B16.34 - BS 5352  
 Full Port Type  
 Testing according to API 598  
 Marking MSS SP25  
 Spring available on request for Piston  
 and Ball Check Valves  
 Ring joint type gasket available on request  
 Spiral wound gasket  
 Integral body flanges  
 Face to face according to ASME B16.10  
 Flanges according to ASME B16.5  
 Ratings:  
 - carbon steel class 1500 3705 psig @ 100°F  
 255 bar + 38°C



FULL PORT – FIG. 15F 40, 15F 50, 15F 60						
SIZE	inch	1/2	3/4	1	1 1/2	2
	mm	15	20	25	40	50
A	inch mm	8.50 216	9.02 229	10 254	12.01 305	14.50 368,5
B	inch mm	4.13 105	4.92 125	5.31 135	6.10 155	7.68 195
F Piston/ F Ball	inch mm	.47 12	.57 14,5	.75 19	1.22 31	1.57 40
F Swing	inch mm	.55 14	.71 18	.94 24	1.46 36,6	1.89 48
Weight	lb. kg	16.5 7,5	24.5 11,2	31.75 14,5	58.25 26,5	110 50
GASKET		G2	G3	G4	G7	G8