

STANDARD U-BOLT

Figure 283 Carbon Steel

Figure 283PVC PVC Coated

Figure 283SS Stainless Steel

Our standard U-Bolts are recommended for use as supports or guides for piping. They are supplied with four hex nuts.

The Figure 283PVC is for support of piping where contact with the pipe is not desired. Threads and nuts are not coated.

The Figure 283SS is recommended for support of stainless steel piping. Please specify the grade of stainless steel you require when ordering.

Load Ratings shown are for Carbon Steel. PVC coating should not exceed 140°F/60°C.

Materials: Carbon Steel, Stainless Steel

Compliance: Federal Specification WW-H-171 Type 24, MSS-SP 69 (Type 24), and BSPSS-BS3974.

Finish: Plain, Electro-Galvanized, Hot-Dip Galvanized (Rod Size 1/4" cannot be Hot-Dip Galvanized) Hot-dip galvanized U-Bolts will come with oversized hex nuts.

Maximum Stainless Steel Loads are 0.80 times the stated loads below.

Ordering: Specify pipe size, figure number, and finish.

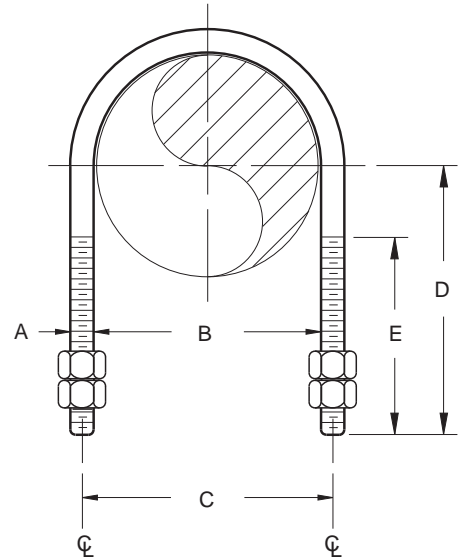


FIGURE 283 – STANDARD U-BOLT

PIPE SIZE	MAXIMUM LOAD		STOCK SIZE A	B	C	D	E	WEIGHT EACH
	650°F/343°C	750°F/399°C						
1/2	580	454	1/4	7/8	1 3/16	2 1/4	2 1/8	0.11
15	2580	2020	M6	22	30	57	54	0.05
3/4	580	454	1/4	1 1/8	1 3/8	2 3/4	2 1/8	0.12
20	2580	2020	M6	29	35	70	54	0.05
1	580	454	1/4	1 3/8	1 5/8	2 3/4	2 1/8	0.12
25	2580	2020	M6	35	41	70	54	0.05
1 1/2*	1200	1070	3/8	7/8	1 1/4	2 3/4	2 1/8	0.16
15*	5338	4760	M10	22	32	70	54	0.07
3/4*	1200	1070	3/8	1 1/8	1 1/2	2 3/4	2 1/8	0.16
20*	5338	4760	M10	29	38	70	54	0.07
1*	1200	1070	3/8	1 3/8	1 3/4	2 3/4	2 1/8	0.19
25*	5338	4760	M10	35	44	70	54	0.09
1 1/4	1460	1144	3/8	1 3/4	2 1/8	2 7/8	2 1/8	0.28
32	6495	5089	M10	44	54	73	54	0.13
1 1/2	1460	1144	3/8	2	2 3/8	3	2 1/2	0.30
40	6495	5089	M10	51	60	76	64	0.14
2	1460	1144	3/8	2 1/2	2 7/8	3 1/4	2 1/2	0.33
50	6495	5089	M10	64	73	83	64	0.15
2 1/2	2700	2114	1/2	3	3 1/2	3 3/4	3	0.70
65	12011	9404	M12	76	89	95	76	0.32
3	2700	2114	1/2	3 3/8	4 1/8	4	3	0.78
80	12011	9404	M12	92	105	102	76	0.35
3 1/2	2700	2114	1/2	4 1/8	4 3/8	4 1/2	3	0.84
90	12011	9404	M12	105	117	114	76	0.38
4	2700	2114	1/2	4 3/8	5 1/8	4 3/2	3	0.90
100	12011	9404	M12	117	130	114	76	0.41

* Made special to customer order

DIMENSIONS		TEMPERATURE	LOADS	WEIGHT
INCHES	MILLIMETERS	FAHRENHEIT	POUNDS	POUNDS
		CELSIUS	NEWTONS	KILOGRAMS