

## NFPA SWIVEL RING

### Figure 800FP

Designed for the support of non-insulated static pipe lines. The swivel nut is knurled to provide a gripping surface when adjusting the tubing elevation and is tapped to the reduced rod standards of NFPA.

**Compliance:** Federal Specification A-A-1192A Type 10, MSS SP-69 Type 10, Underwriters Laboratory listed, and Factory Mutual approved (¾" through 8"), and NFPA standards.

We also offer Swivel Ring hangers that are for standard commercial pipe (Figure 800), copper tubing (Figure 800CT), and PVC coated (Figure 800PVC), in this catalog.

**Material:** Carbon Steel.

**Finish:** Electro-Galvanized.

**Ordering:** Specify pipe size, figure number and finish. For Metric applications specify Figure M800N.

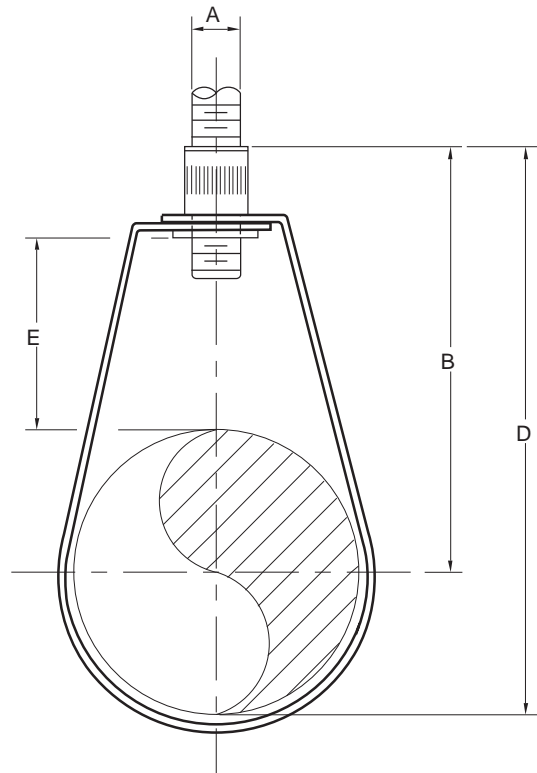


FIGURE 800FP – NFPA ADJUSTABLE SWIVEL RING

PIPE SIZE	MAXIMUM LOAD	A	B	D	E	WEIGHT EACH
½	300	⅜	2¾	3⅞	1⅞	0.09
10	1335	M10	70	78	37	0.04
¾	300	⅜	2½	3⅞	1½	0.10
20	1335	M10	64	78	29	0.05
1	300	⅜	2½	3⅞	1	0.10
25	1335	M10	64	81	25	0.05
1¼	300	⅜	2⅝	3⅞	1⅞	0.10
32	1335	M10	71	90	27	0.05
1½	300	⅜	3⅜	3⅞	1⅞	0.11
40	1335	M10	79	98	27	0.05
2	300	⅜	3⅝	4⅜	1½	0.12
50	1335	M10	84	111	29	0.05
2½	525	⅜	3⅞	5	1¼	0.25
65	2335	M10	94	127	32	0.11
3	525	⅜	3¾	5⅞	1½	0.30
80	2335	M10	95	141	29	0.14
3½	525	⅜	4⅝	6⅝	1½	0.33
90	2335	M10	110	160	38	0.15
4	650	⅜	4½	7	1¾	0.41
100	2891	M10	114	178	41	0.19
5	1000	½	5⅞	8⅜	2¼	0.58
125	4448	M12	143	213	57	0.26
6	1000	½	6½	9⅜	2⅞	0.92
150	4448	M12	165	249	62	0.42
8	1000	½	7⅝	12¼	2¾	1.16
200	4448	M12	202	311	67	0.53

DIMENSIONS		TEMPERATURE	LOADS	WEIGHT
INCHES	FAHRENHEIT	POUNDS	POUNDS	
MILLIMETERS	CELSIUS	NEWTONS	KILOGRAMS	