

PIPE SADDLE WITH YOKE

Figure 125

The Figure 125 is used for support of piping from below without welding to the pipe.

Rated loads are for up to 650 F (343 C). Maximum Galvanized Temperature is 450°F (232° C)

Material: Carbon Steel

Compliance: MSS-SP-58 Type 37, Federal Specification A-A-1192A Type 37 and BSPSS-BS3974

Finish: Plain, Painted, Galvanized

Ordering: Specify pipe size, figure number, and finish.

NOTE: The lower supporting pipe must be ordered separately. A Figure 138 Without Threads can be used. The stated Load of the Figure 125 is not applicable to the stanchion used or anyother method used to support the Figure 125.

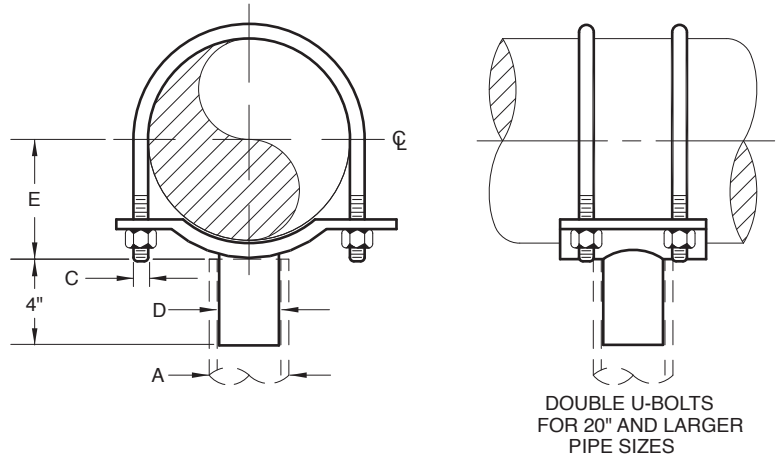


FIGURE 125 – PIPE SADDLE WITH YOKE

PIPE SIZE	MAXIMUM LOAD	SUPPORT PIPE A	C	STEM D	E	WEIGHT EACH
2	900	1½	⅜	1	1⅞	4.51
50	202	40	M10	25	37	2.05
2½	1200	2	½	1½	1⅞	4.85
65	270	65	M12	40	43	2.20
3	1200	2	½	1½	2	5.05
80	270	65	M12	40	51	2.29
4	1200	3	½	2½	2½	5.15
100	270	80	M12	65	64	2.34
5	1200	3	½	2½	3⅞	5.61
125	270	80	M12	65	78	2.54
6	1200	3	⅝	2½	3⅝	7.30
150	270	80	M16	65	92	3.31
8	1200	3	⅝	2½	4⅞	9.25
200	270	80	M16	65	119	4.20
10	1200	3	¾	2½	5⅝	13.75
250	270	80	M20	65	149	6.24
12	1200	3	⅞	2½	6⅞	15.50
300	270	80	M20	65	175	7.03
14	1500	4	⅞	3	7⅝	25.35
350	337	100	M20	80	194	11.50
16	1750	4	⅞	3	8⅝	30.80
400	393	100	M20	80	219	13.97
18	2000	4	1	3	9¾	37.64
450	450	100	M24	80	248	17.07
20	3500	6	(2)-1	5	10¾	75.35
500	787	150	(2)-M24	125	273	34.18
24	3500	6	(2)-1⅝	5	13	112.80
600	787	150	(2)-M30	125	330	51.17
30	3500	6	(2)-1⅝	5	16	137.30
750	787	150	(2)-M30	125	406	62.28
36	3500	8	(2)-1¼	6	19	210.15
900	787	200	(2)-M30	150	483	95.32

DIMENSIONS	TEMPERATURE	LOADS	WEIGHT
INCHES	FAHRENHEIT	POUNDS	POUNDS
MILLIMETERS	CELSIUS	NEWTONS	KILOGRAMS