

RESOURCE MANAGEMENT SOFTWARE

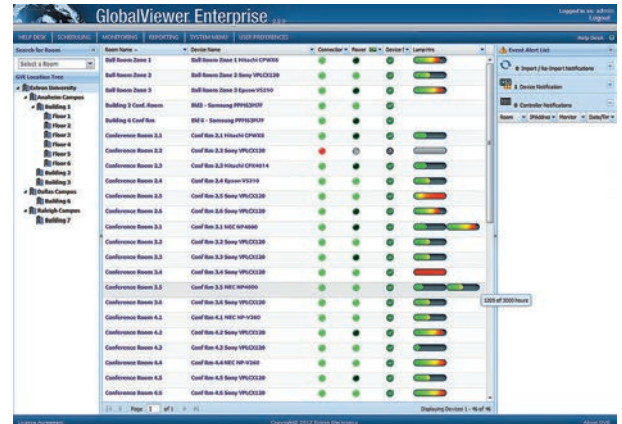
GlobalViewer Enterprise Server-Based AV Resource Management Software

GlobalViewer® Enterprise takes enterprise-wide scheduling, monitoring, and help-desk functionality to a new level. Building on an already powerful feature set, this latest version, 2.2, provides a host of new and enhanced features that streamline and simplify many common AV tasks. Microsoft® .NET® technology allows GlobalViewer Enterprise to integrate with third-party facility scheduling software for viewing room availability and managing meeting schedules. GlobalViewer Enterprise 2.0, and later, supports configurations created in Extron Global Configurator 3.5.x, as well as the newly-introduced Global Configurator Plus and Professional configuration software.

Powerful AV System Management

GlobalViewer Enterprise is a powerful resource management tool that is designed to leverage the security, data, and access control capabilities of Microsoft Windows Server.

AV and IT support teams will appreciate the agility and flexibility GlobalViewer Enterprise provides to access usage data, create reports, and control the system from any computer on the LAN or WAN. The Help Desk view offers one to observe the entire enterprise in a single window and gain access to detailed room data with just a click of a mouse. GlobalViewer Enterprise also supports integration of third-party control systems.



Expanded Help Desk Views

NOW AVAILABLE

What's New in GlobalViewer Enterprise 2.2

Support for Pro and Plus Series Control Products

GlobalViewer Enterprise now supports configurations created in Extron Global Configurator Plus and Professional.

Updated Reporting User Interface

With GVE 2.2, the report generation can be scheduled and automated with the help of an easy to use user interface.

More flexible input source usage reporting

Global Configurator Plus and Professional will allow users greater flexibility in reporting input source usage to GVE, which will better support touchpanel and scaling systems.

GVE Room Events

Allow GVE to trigger customized sets of actions from control systems managed by it.

Global Configurator Plus and Professional upload to GVE

The auto upload options will be provided in GC Plus and Pro to enable the configuration to be pushed directly to GVE without needing to import the configuration after every update to the system from GVE.

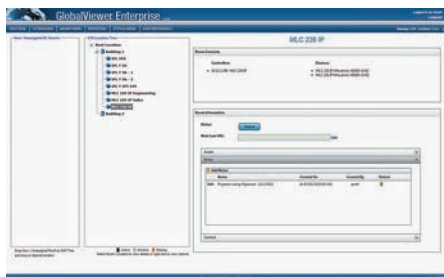
Model

Version Description

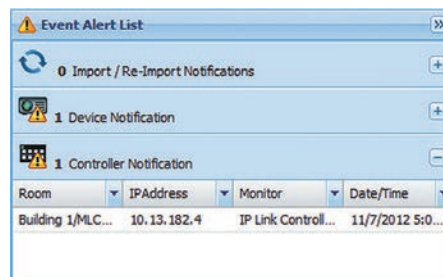
Part Number

GlobalViewer Enterprise Update

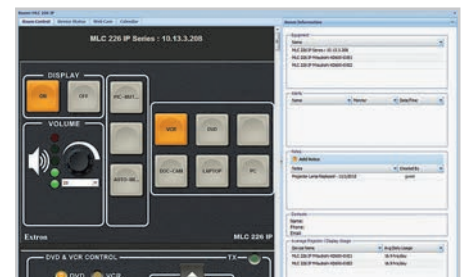
Resource Mngmnt Software Update 29-096-03



Enhanced Tree Manager



Enhanced Event Alert List



Streamlined Room Control Terminal

For updated product availability, go to www.extron.com

Europe
+31.33.453.4040 / +800.3987.6673
+31.33.453.4050 FAX

Middle East
+971.4.299.1800
+971.4.299.1880 FAX

Asia
+65.6383.4400 / +800.7339.8766
+65.6383.4664 FAX

China
+86.21.3760.1568 / +4000.398766
+86.21.3760.1566 FAX

Japan
+81.3.3511.7655
+81.3.3511.7656 FAX