

LINKED EYE RODS

Figure 306 Eyes Not Welded

Figure 341 Welded Eyes

Linked Eye Rods allow for the movement of the lower rod where bending would be unacceptable. Unwelded eyes have a lower load rating.

The inside diameter of the eye is 3/8" larger than the rod diameter for rod sizes up to 1 1/2" while the inside diameter for larger size rods will be 3/4" greater. Both rods will normally be furnish right hand tapped to lengths shown for our Figure 93 unless ordered special.

Maximum Loads given are rated for up to 650°F (343°C.)

Material: Carbon Steel

Finish: Plain, Electro-galvanized, Hot-Dip Galvanized

Ordering: Specify rod diameter (A), overall length (B), length of each eyerod (D and C), and thread length (E) if other than standard, Figure Number and finish.

Note: The use of galvanized coatings at temperatures above 450°F is at the discretion of the customer.

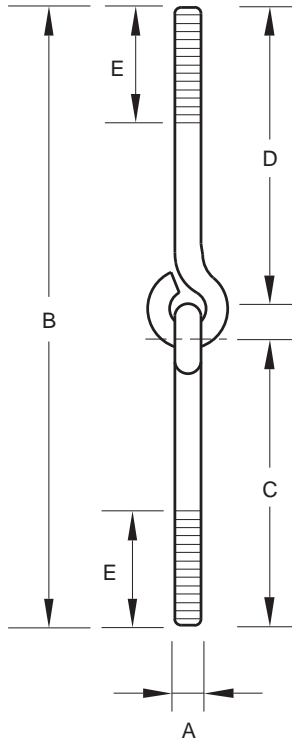


FIGURE 306 AND 341 – LINKED EYE RODS

ROD SIZE A	MAXIMUM LOAD	
	FIGURE 306	FIGURE 341
3/8	240	730
M10	1068	3247
1/2	440	1350
M12	1957	6005
5/8	705	2160
M16	3136	9609
3/4	1050	3230
M20	4671	14368
7/8	1470	4480
M20	6539	19929
1	1940	5900
M24	8630	26246
1 1/4	3120	9500
M30	13879	42260
1 1/2	4650	13800
M36	20685	61388
1 3/4	6380	18600
M42	28381	82740
2	8280	24600
M48	36833	109431
2 1/4	10900	32300
M56	48488	143683
2 1/2	13400	39800
M64	59609	177046

MALE AND FEMALE SWING ROD FITTING

Figure 701

The fitting is used when flexible movement of pipeline is required. The threaded stud portion can be installed into a concrete insert or bolted to flange of I beam, angle or channel. Made special to customer order.

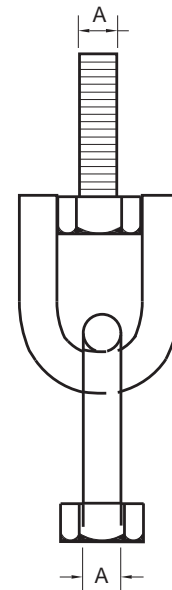
Material: Steel.

Finish: Plain.

Ordering: Specify size number, figure number.

FIGURE 701 – MALE AND FEMALE SWING ROD FITTING

SIZE NO.	A	WEIGHT EACH
1	3/8	0.25
1	M10	0.11
2	1/2	0.33
2	M12	0.15



DIMENSIONS	TEMPERATURE	LOADS	WEIGHT
INCHES	FAHRENHEIT	POUNDS	POUNDS
MILLIMETERS	CELSIUS	NEWTONS	KILOGRAMS