

# PIPE SLIDE ASSEMBLY

**Figure 1010**

Designed to be welded directly to the pipe to allow for support from below and allow for horizontal movement with a low coefficient of friction.

The assembly consists of a carbon steel tee with a polished stainless bottom which rests on a PTFE (glass filled teflon) plate, bonded to a carbon steel plate. The base plate configuration will vary with the Type selected.

**Maximum temperature:** 200° F at the sliding surface

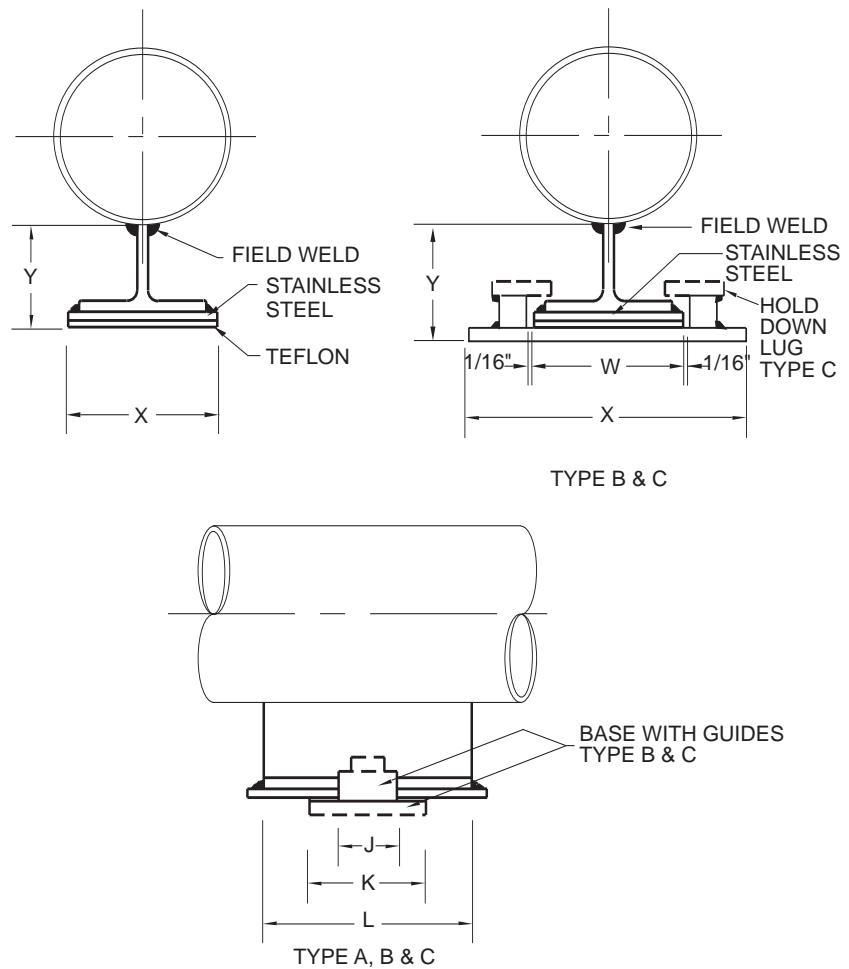
Greater height dimensions, longer transverse and longitudinal movements, and other customer requirements can be supplied upon request.

**Compliance:** MSS SP-69 Type 35.

**Material:** Carbon Steel, Stainless Steel, PTFE.

**Finish:** Plain, Painted, Hot-Dip Galvanized.

**Ordering:** Specify pipe size, figure number, travel, and type. For Metric applications specify Figure M1010.



**FIGURE 1010 – PIPE SLIDE ASSEMBLY**

PIPE SIZE	MAX LOAD*	TRAVEL	Y		L TYPES A, B, C	K TYPES A, B, C	W TYPES A, B, C	X		WEIGHT EACH**
			TYPE A	TYPE B & C				TYPE A	TYPE B & C	
UP TO 8"	7000	5	3 3/4	4 1/4	8 1/2	4	3 1/2	3 1/2	6	7
		10			13 1/2					10
		15			18 1/2					13
		20			23 1/2					17
UP TO 200	31139	127	95	108	216	102	89	89	152	3.2
		254			343					4.5
		381			470					5.9
		508			597					7.7
10" TO 24"	13500	5	3 3/4	4 1/4	10 1/2	6	4 1/2	4 1/2	7	11
		10			15 1/2					15
		15			20 1/2					19
		20			25 1/2					23
250 TO 600	60053	127	95	108	267	152	114	114	178	5.0
		254			394					6.8
		381			521					8.6
		508			648					10.4

\* Based upon 500 psi / 35.2 Kg per sq. cm. pressure on the PTFE

\*\* Weight Each for Type A Only.

DIMENSIONS	TEMPERATURE	LOADS	WEIGHT
INCHES	FAHRENHEIT	POUNDS	POUNDS
MILLIMETERS	CELSIUS	NEWTONS	KILOGRAMS