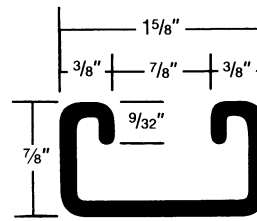


# MULTI-STRUT®

## CHANNEL/M-172



**M-172-RS**  
 $\frac{7}{8}$ " x  $1\frac{5}{8}$ " x  $\frac{7}{8}$ " x 12GA  
 $\frac{9}{16}$ " Dia.;  
 $1\frac{7}{8}$ " on Centers

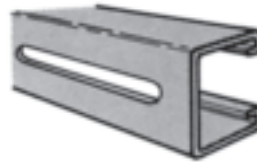


$\frac{7}{8}$ " x  $1\frac{5}{8}$ " x  $\frac{7}{8}$ "  
 12 Gauge Channel  
 wt./100 ft. - 139#

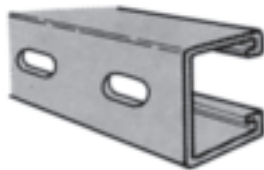
Stocked in Pre Galvanized, Plain & Painted in 10 & 20 ft. lengths. Post Galvanized & Aluminum available upon request.



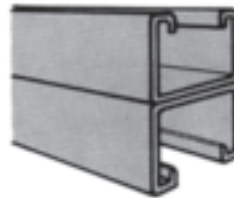
**M-172-KO**  
 $\frac{7}{8}$ " x  $1\frac{5}{8}$ " x  $\frac{7}{8}$ " x 12GA  
 $\frac{7}{8}$ " Dia. Knockout;  
 6" on Centers



**M-172-OS3**  
 $\frac{7}{8}$ " x  $1\frac{5}{8}$ " x  $\frac{7}{8}$ " x 12GA  
 $1\frac{3}{32}$ " x 3" Slot;  
 4" on Centers



**M-172-OS**  
 $\frac{7}{8}$ " x  $1\frac{5}{8}$ " x  $\frac{7}{8}$ " x 12GA  
 $\frac{9}{16}$ " x  $1\frac{1}{8}$ " Slot;  
 2" on Centers



**M-172-A**  
 $1\frac{3}{4}$ " x  $1\frac{5}{8}$ " X  $1\frac{3}{4}$ " x 12GA  
 Back to Back

\*Other welded combinations available upon request

### PROPERTIES OF SECTION

Figure Number	Wt./Ft. Lbs.	Area of Section Sq. in.	X-X Axis			Y-Y Axis		
			Ix in. <sup>4</sup>	Sx in <sup>3</sup>	Rx in.	Iy in. <sup>4</sup>	Sy in <sup>3</sup>	Ry in.
M-172	1.39	0.387	0.036	0.070	0.307	0.142	0.175	0.607
M-172-A	2.78	0.774	0.170	0.207	0.469	0.285	0.350	0.607

### ALLOWABLE COLUMN LOADS (LBS.)

Figure Number	UNSUPPORTED HEIGHT OF COLUMN IN INCHES												
	12"	18"	24"	30"	36"	42"	48"	60"	72"	84"	96"	108"	120"
M-172	4755	4485	4108	3622	3029	2337	1789	1145	795	584	447	353	286
M-172-A	9758	9527	9204	8788	8280	7680	6988	5326	3718	2731	2091	1652	1338

### ALLOWABLE BEAM LOADS (LBS.)

Figure Number	Notes	SPAN IN INCHES												
		12"	18"	24"	30"	36"	42"	48"	60"	72"	84"	96"	108"	120"
M-172	1	1165	776	582	466	388	333	291	233	194	166	146	129	116
	2	-	-	-	381	265	195	149	95	66	49	37	29	24
	3	0.024	0.055	0.098	0.153	0.220	0.299	0.391	0.611	0.879	1.197	1.563	1.979	2.443
M-172-A	1	3445	2296	1722	1378	1148	984	861	689	574	492	431	383	344
	2	-	-	-	-	-	910	697	446	310	227	174	138	111
	3	0.015	0.035	0.062	0.097	0.139	0.189	0.247	0.386	0.556	0.757	0.989	1.252	1.545

#### NOTES:

- I. All Figures show the Load in Lbs.
- II. Line 1 shows the Allowable Uniform Beam Load based on calculations using 25000 psi Stress.
- III. Line 2 shows the Allowable Uniform Load at Maximum Deflection = 1/240 of Span.
- IV. Line 3 shows Beam Deflection in inches.