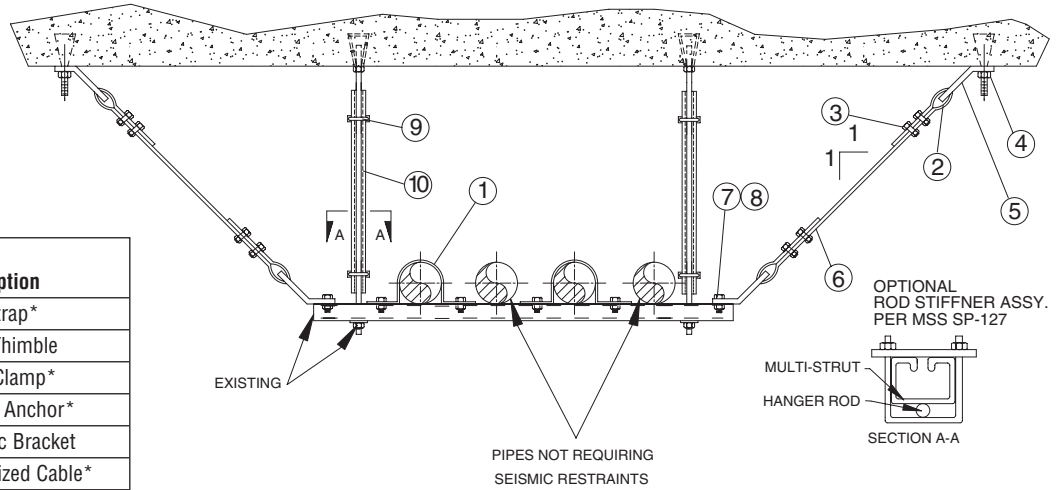


# MULTI-STRUT®

## SEISMIC BRACING

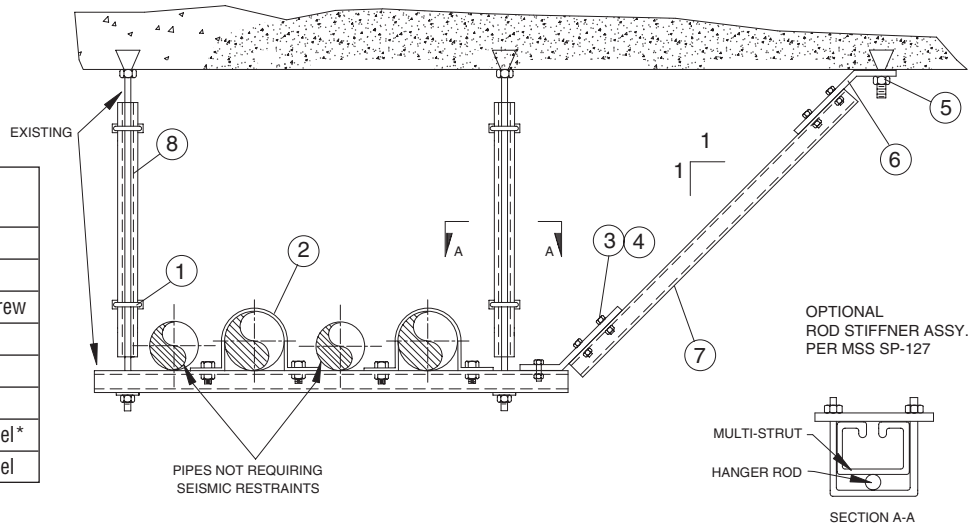
### DETAIL SR-8



Item No.	No. Req'd.	Fig No. Part No.	Description
1	2	C1108	Pipe Strap*
2	4	WRT	Rope Thimble
3	8	SCC	Cable Clamp*
4	2	KB	Wedge Anchor*
5	4	3HSB	Seismic Bracket
6	2	GAC	Galvanized Cable*
7	6	BLT	Hex Head Cap Screw
8	6	SN	Strut Nut
9	4	C402	Beam Clamp
10	2	M132	Multi-Strut Channel

\*Size based upon application.

### DETAIL SR-9



Item No.	No. Req'd.	Fig No. Part No.	Description
1	4	SAC	Seismic Clamp
2	2	C1108	Pipe Strap*
3	9	BLT	Hex Head Cap Screw
4	9	SN	Strut Nut
5	1	KB	Wedge Anchor*
6	2	3HSB	Seismic Angle
7	1	MXXX	Multi-Strut Channel*
8	2	M132	Multi-Strut Channel

\*Size based upon application.