

## STEEL CONCRETE INSERT

### Figure 650

Designed to provide a connection point for hanger rods in concrete the Figure 650 must be installed in place prior to building concrete being poured. It can accommodate a large variety of rod sizes by selecting and ordering the Figure 650N separately. For lighter loads our Figure 75 is also available.

**Compliance:** Federal Specification A-A-1192A (Type 18), MSS SP-69 (Type 18).

**Material:** Carbon Steel.

**Finish:** Plain, Painted, Electro-Galvanized.

**Ordering:** Specify figure number, and finish. For Metric applications specify Figure M650.

## CONCRETE INSERT NUT

### Figure 650N

Designed for use with Figure 650 Steel Concrete Insert.

**Material:** Carbon Steel.

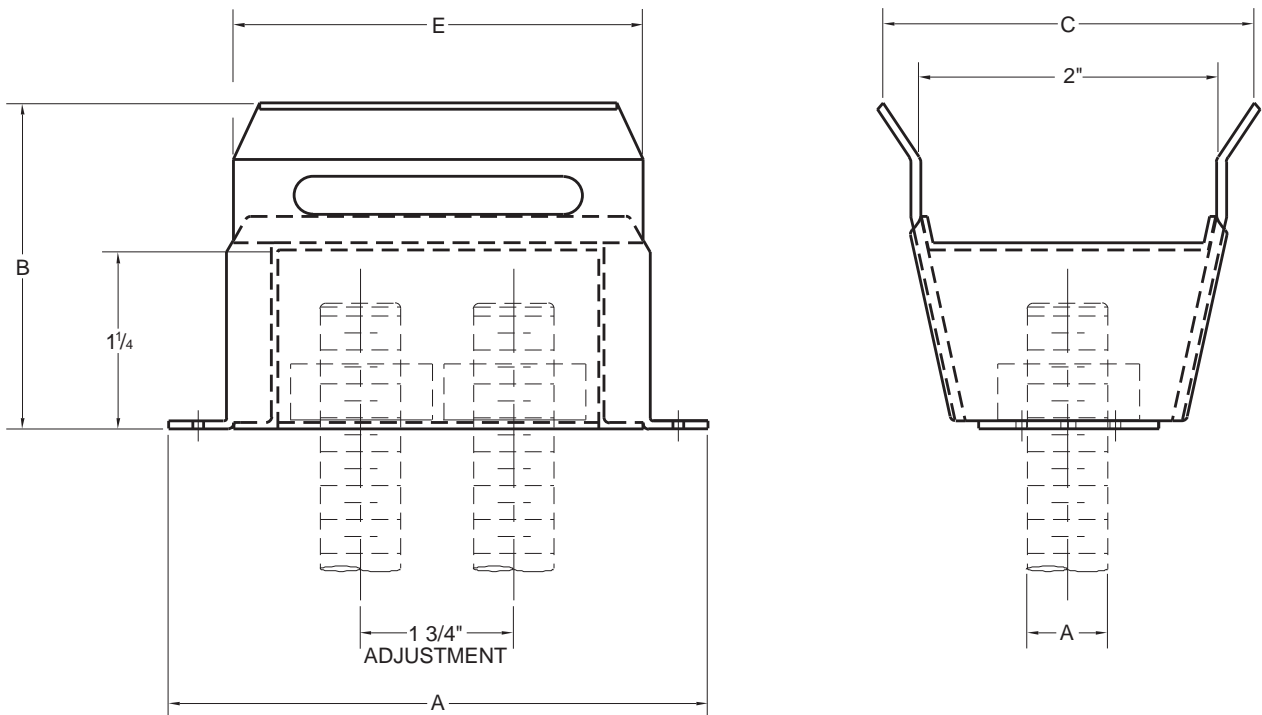
**Finish:** Plain, Painted, Electro-Galvanized.

**Ordering:** Specify rod size, figure number, and finish. For Metric applications specify Figure M650N.

**FIGURE 650 – STEEL CONCRETE INSERT**  
**FIGURE 650N – CONCRETE INSERT NUT**

ROD SIZE	MAXIMUM LOAD	A	B	C	E	WEIGHT EACH	
						INSERT	NUT
3/8	610	4 3/8	2 5/16	3 3/8	3 3/8	0.82	0.13
M10	2714	111	59	79	79	0.37	0.06
1/2	1130	4 3/8	2 5/16	3 3/8	3 3/8	0.86	0.15
M12	5027	111	59	79	79	0.39	0.07
5/8	1200	4 3/8	2 5/16	3 3/8	3 3/8	0.89	0.19
M16	5338	111	59	79	79	0.40	0.09
3/4	1200	4 3/8	2 5/16	3 3/8	3 3/8	0.86	0.22
M20	5338	111	59	79	79	0.39	0.10
7/8	1200	4 3/8	2 7/16	2 15/16	3 3/8	0.93	0.24
M22	5338	105	56	75	79	0.42	0.11

Maximum Load Rating is dependant upon the selected nut size used.



DIMENSIONS		TEMPERATURE	LOADS	WEIGHT
INCHES		FAHRENHEIT	POUNDS	POUNDS
MILLIMETERS		CELSIUS	NEWTONS	KILOGRAMS