



## Type-14 Pneumatic Diaphragm

### Standard Features (Sizes 1/2" - 2")

- Rugged solid thermoplastic construction for maximum corrosion resistance
- Uniquely designed body and bonnet together with diaphragms of new sealing designs by the state-of-the-art computer aided analysis for superior sealing
- Weir design for excellent throttling
- NAMUR pad mount for easy installation of solenoid valves
- Full vacuum rated
- Bubble-tight sealing, even in applications such as slurries or those with suspended particles
- Bonnet seals to protect internals from corrosive environments
- Adjustable travel stop to prevent diaphragm from being overtightened
- Bayonet structure to connect compressor and diaphragm for quick maintenance
- Integrally molded bottom stand for simple yet firm panel mounting
- Indicator at the top for valve position
- PVDF gas barrier, which protects EPDM backing cushion from gas permeation, is a standard for all valves with PTFE diaphragm
- Low profile

### Options

- Solenoid valves in all electrical type ratings and voltages
- Limit switches for interface with computers and other equipment
- Positioners: 3-15 mA and 4-20 mA inputs for throttling applications
- 4-20 mA output for interface with computers and other equipment
- Manual override for air-to-spring

### Specifications

<b>Sizes:</b>	1/2" - 2"
<b>Body Materials:</b>	PVC, CPVC, PP and PVDF
<b>Bonnet Materials:</b>	PPG
<b>End Connectors:</b>	See Valve Materials
<b>Diaphragms:</b>	See Valve Materials
<b>Actuator Housing:</b>	PPG
<b>Type:</b>	Air-to-Air; Air-to-Spring
<b>Air Supply:</b>	60psi (Recommended) 90psi (Maximum)
<b>O-Ring End Connectors:</b>	EPDM

2" PVDF TYPE-14  
AIR-TO-AIR  
FLANGED  
DIAPHRAGM  
VALVE



1" PP TYPE-14  
AIR-TO-AIR TRUE  
UNION  
DIAPHRAGM  
VALVE

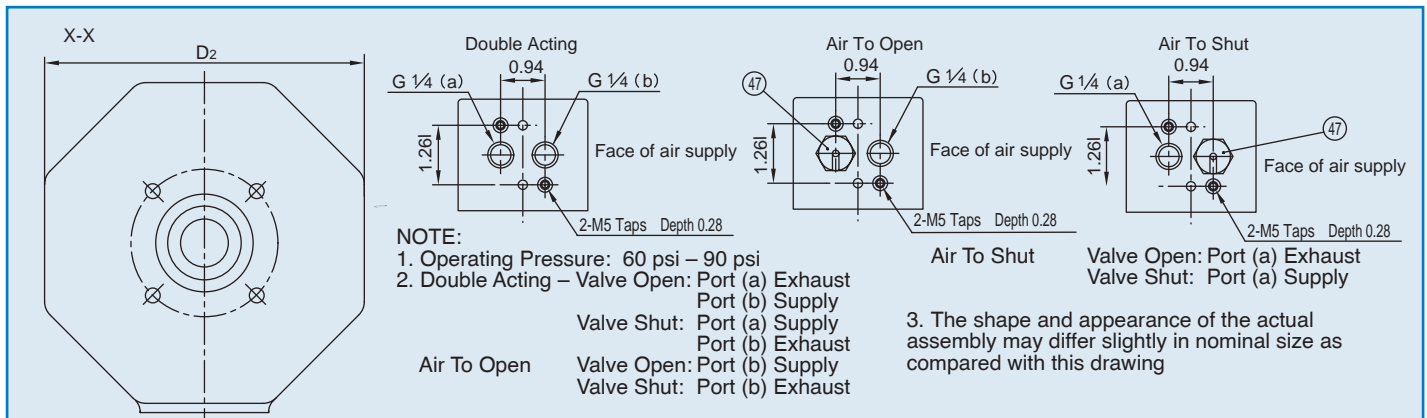
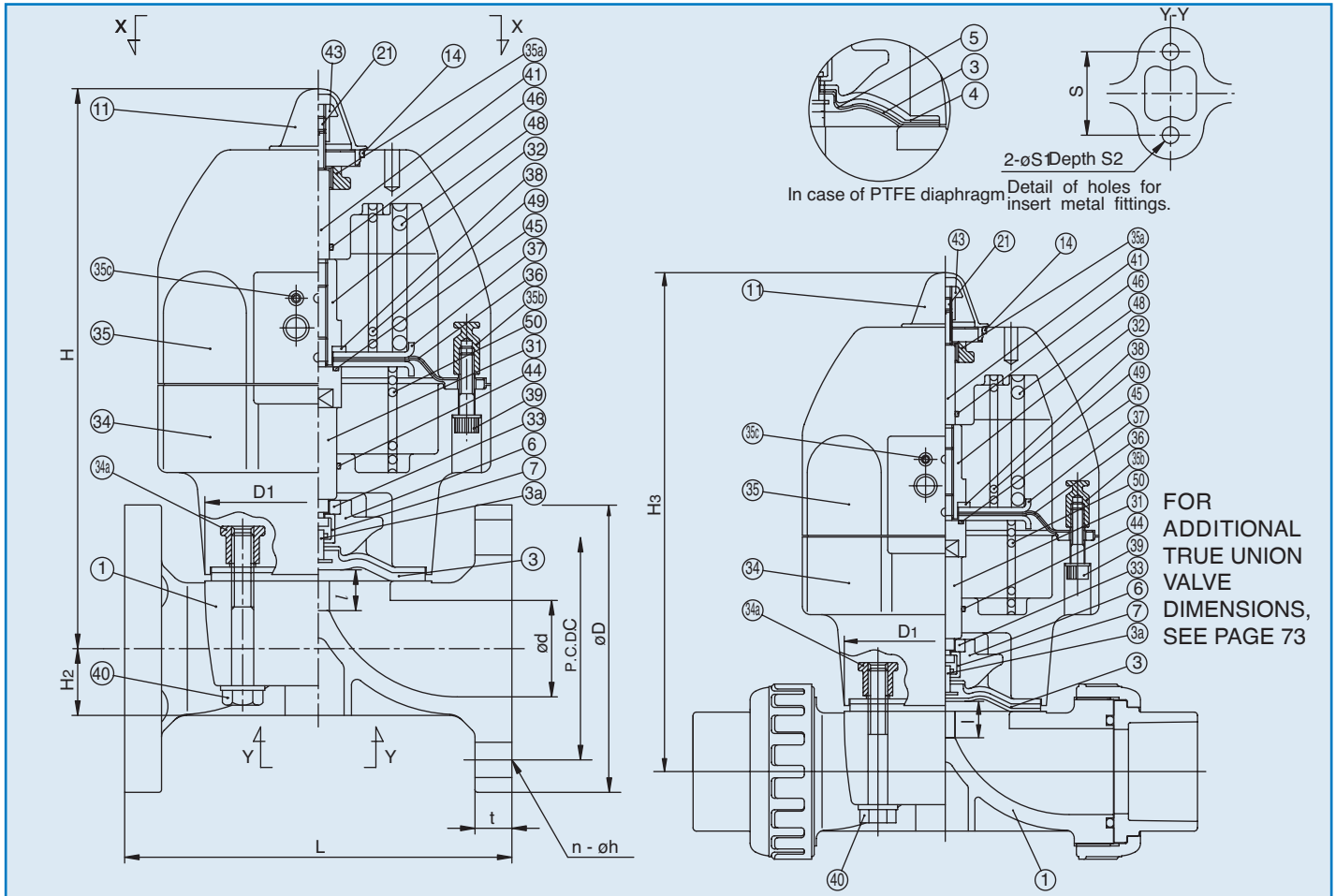


2" PVC TYPE-14  
AIR-TO-SPRING  
FLANGED  
DIAPHRAGM  
VALVE WITH NEMA  
IV DOUBLE LIMIT  
SWITCH



# Type-14 Pneumatic

# Diaphragm Valves



## Dimensions Type-14 Pneumatic Flanged (Sizes 1/2" – 2") (in.)

## Weight/Cv

NOMINAL SIZE		ANSI CLASS 150						TRUE UNION										WT. [LBS]		
INCHES	mm	d	C	D	n	h	D1	D2	l	L	t	H	H2	H3	s	S1	S2	A-A	A-S	Cv
1/2	15	0.63	2.38	3.50	4	0.62	2.13 × 2.60	5.12	0.39	4.25	0.43	7.32	0.49	7.32	0.98	0.28	0.51	4.80	5.12	4.8
3/4	20	0.79	2.75	3.88	4	0.62	2.13 × 2.60	5.12	0.39	5.88	0.51	7.40	0.57	7.40	0.98	0.28	0.51	5.11	5.78	5.3
1	25	0.98	3.12	4.25	4	0.62	2.64 × 3.15	5.12	0.47	5.88	0.59	7.60	0.73	7.60	0.98	0.28	0.51	6.00	6.50	8.5
1-1/4	32	1.26	3.50	4.62	4	0.62	2.64 × 3.15	5.12	0.47	6.38	0.63	7.76	0.89	7.76	0.98	0.28	0.51	6.50	7.00	11
1-1/2	40	1.57	3.88	5.00	4	0.62	4.25 × 4.25	6.85	0.83	6.94	0.63	11.54	1.08	11.54	1.77	0.35	0.59	12.82	14.29	26
2	50	2.05	4.75	6.00	4	0.75	4.84 × 4.84	6.85	0.98	7.94	0.79	11.89	1.42	11.89	1.77	0.35	0.59	13.00	14.50	43