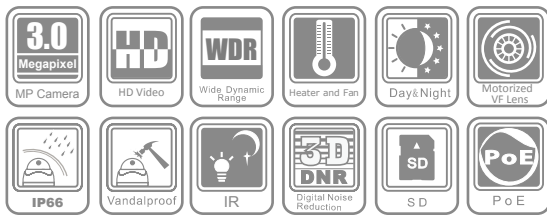


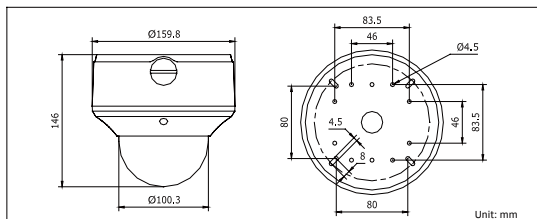
DS-2CD7254FWD-EIZ(H)(S) 3.0MP WDR Outdoor Network Camera



Key features

- 3.0 Mega-pixel (2048 x 1536)
- HD 1080p Realtime Video
- 120dB Wide Dynamic Range
- True Day/Night
- 3D Digital Noise Reduction
- Motorized VF Lens
- Up to 30m (90 ft) IR LED
- Vandal-proof Housing
- IP66 Rating

Dimensions



Specifications

	DS-2CD7254FWD-EIZ(S)	DS-2CD7254FWD-EIZH(S)
Camera		
Image sensor	1/3" progressive scan CMOS	
Min. illumination	0.17 lux @F1.6, AGC on 0 lux with IR	
Shutter time	1/30s ~ 1/100,000s	
Lens	2.7 ~ 9 mm @F1.6, Angle of view: 101° ~ 30.4°	
Lens mount	Φ14	
Auto iris	DC drive	
Angle Adjustment	Pan: 0 ~ 355°, Tilt: 0 ~ 80°, Rotation: 0 ~ 355°	
Day & Night	IR cut filter with auto switch	
Wide dynamic range	120dB	
Digital noise reduction	3D DNR	
Compression Standard		
Video compression	H.264 / MPEG4 / MJPEG	
Bit rate	32 Kbps ~ 16 Mbps	
Audio Compression	-S: G.711/G.726	
Dual stream	Yes	
Image		
Max. Image Resolution	2048 × 1536	
Frame rate	60Hz: 15fps (2048 × 1536), 30fps (1920 × 1080), 30fps (1600 × 1200)	
Image settings	Saturation, Brightness, Contrast adjustable by client software or web browser	
Network		
Network storage	NAS	
Alarm trigger	Motion detection, tampering alarm, network disconnect, IP address conflict, storage exception	
Protocols	TCP/IP, HTTP, DHCP, DNS, DDNS, RTP, RTSP, PPPoE, SMTP, NTP, SNMP, HTTPS, FTP, 802.1x, Qos	
System compatibility	CPI, PSIA, ONVIF	
Interface		
Communication interface	1 RJ45 10 M / 100 M Ethernet interface	
Video output	1 Vp-p composite output (75 Ω/RCA)	
On-board storage	Built-in Micro SD slot, up to 32 GB	
Reset button	Yes	
General		
Operating conditions	-10 °C ~ 60 °C (14 °F ~ 140 °F), Humidity 90% or less (non-condensing)	-40 °C ~ 60 °C (-40 °F ~ 140 °F) with heater and fan on
Power supply	24 VAC ± 10%, PoE (802.3af)	24 VAC ± 10%, High PoE (802.3at)
Power consumption	12W max	24W max with heater & fan on
Impact protection	IEC60068-2-75Eh, 50J; EN50102, up to IK10	
Weather proof rating	IP66	
IR range	approx. 20 ~ 30m	
Dimensions	Φ 159.8 × 146 mm (Φ 6.29" × 5.75")	
Weight	2100 g (4.62 lbs)	

Available models

DS-2CD7254FWD-EIZ, DS-2CD7254FWD-EIZH, DS-2CD7254FWD-EIZHS

* -H: built-in heater and fan

* -I: IR LEDs, up to 30m

* -Z: motorized VF lens

* -S: series (Special Order): 1-ch audio, 2-ch alarm and 1-ch RS-485

Accessories



DS-1268ZJ
Pendant mount
Hik white
Aluminum alloy
Φ138*590mm



DS-1277ZJ
Wall Mount,
Outdoor, Junction
Box, Gooseneck



DS-1270ZJ
Pendant Cap