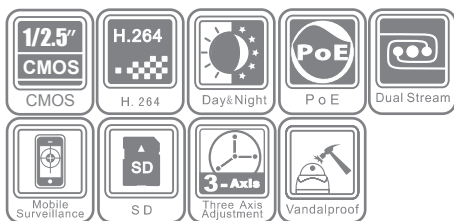


DS-2CD7283F-EIZ(H)

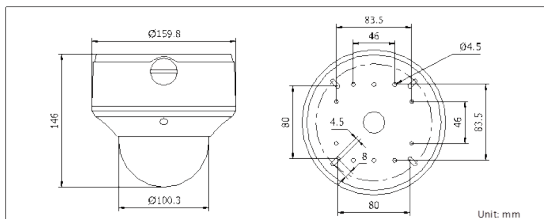
5.0 MP CMOS Network Dome Camera



Key features

- 1/2.5" Progressive Scan CMOS
- 5.0 MP (2560x1920) High Resolution
- HD 1080P Real-time Video
- True Day/Night
- Back Light Compensation
- Motorized Varifocal Lens
- 30m (90 ft) IR LED
- IP66
- Vandal Resistant Housing

Dimensions



Unit: mm

Accessories



DS-1268ZJ
(Indoor in-ceiling mount)



DS-1277ZJ
(Outdoor wall mount)



DS-1270ZJ-160
(Outdoor wall mount)

Specifications

	DS-2CD7283F-EIZ	DS-2CD7283F-EIZH
Camera		
Image sensor	1/2.5" Progressive Scan CMOS	
Min. illumination	1.0 Lux @ (F1.6, AGC ON) 0 Lux with IR	
Shutter time	1/30 s to 1/100,000 s	
Lens	3.5 – 9 mm @ F1.6, Angle of view: 92° - 36°	
Lens control	Motorized	
Lens mount	Φ 14	
Auto iris	DC drive	
Angle adjustment	Pan: 0° ~ 355°, tilt: 0° ~ 80°, rotation: 0° ~ 355°	
Day & night	IR cut filter with auto switch	
Compression Standard		
Video compression	H.264 / MPEG4 / MJPEG	
Bit rate	32 Kbps – 16 Mbps	
Dual stream	Yes	
Image		
Max. image resolution	2560x1920	
Frame rate	60Hz: 7.5fps(2560x1920), 15fps (2048x1536), 30fps (1920x1080), 30fps (1920x1080), 30fps (1600x1200), 30fps (1280x720)	
Image settings	Saturation, brightness, contrast adjustable through client software or web browser	
Network		
Alarm trigger	Motion detection, tampering alarm, network disconnect, IP address conflict, storage exception	
Protocols	TCP/IP, HTTP, DHCP, DNS, DDNS, RTP, RTSP, PPPoE, SMTP, NTP	
Security	User Authentication, Watermark	
Interface		
Communication interface	1 RJ45 10M/100M Ethernet interface	
Video output	1Vp-p composite output (75 Ω/RCA)	
Local storage	Built-in Micro SD slot, up to 32 GB	
Reset button	Yes	
System compatibility	ONVIF, PSIA, CGI	
General		
Operating conditions	10 °C - 60 °C (14 °F - 140 °F) Humidity 90% or less (non-condensing)	-40 °C – 60 °C (-40 °F – 140 °F) with heater and fan on
Ingress Protection level	IP66	
Power supply	24 V AC ± 10%, PoE (802.3af)	24 V AC ± 10%, High PoE (802.3at)
Power consumption	Max. 12W	Max. 24W with heater on
Impact protection	IEC60068-2-75Eh, 50J; EN50102, up to IK10	
IR range	Approx. 20 to 30 meters (60 - 90 ft)	
Dimensions	Φ 159.8 × 146 mm (Φ 6.29" × 5.75")	
Weight	2100g (4.62 lbs)	

Available models

DS-2CD7283F-EIZ, DS-2CD7283F-EIZH

* *-H" series support heater