



Search dmpalarms



REMOTE **LINK**



Remote Connect — Remote Control!

Remote Link™ delivers command and control options that increase security while saving installation and service technicians valuable time.

Use Remote Link to:

- maintain subscriber accounts
- update panel software
- change programming and user codes
- silence alarms
- arm or disarm a system
- bypass zones

Enhance control capabilities with any or all of the following add-ons:

- Advanced Reporting
- Alarm Monitoring
- Command Center
- Account Groups
- Link Server
- SQL Module

Access DMP systems within the building or across the country.

REMOTE LINK™ REMOTE PROGRAMMING SOFTWARE

REMOTE LINK FEATURES

- Remotely manage all DMP XR Series and XT Series panels
- Activate SecureCom Cellular Communication
- Customize remote connection options for network, dial-up and direct connection panel accounts
- Get immediate answers with context-sensitive help and comprehensive user's guide
- Restrict operators to perform only certain functions
- Automatically trap panels for unattended
 - uploading and downloading
 - flash updating panel software
 - retrieving events
- Easily retrieve events for review
- Display or print comprehensive system reports.
- Sort and print user codes by name, code and number

VERSATILE ADD-ONS

- Advanced Reporting Module — Provide specific advanced filtering for customer reports.
- Alarm Monitoring Module — Allow Central Station operators to easily acknowledge alarms and view account information.
- Command Center Module — View multiple accounts and acknowledge alarms from an account grid screen.
- Account Groups Module — Enable Central Station operators to maintain Profiles, Schedules, Output Schedules, Holidays, and User Codes on multiple XR500/XR550 Series panels at the same time.
- Link Server Application — Provide multiple networked operators with simultaneous database access.
- USB Prox Reader — Enroll credentials directly into Remote Link to save time.
- SQL Module — Allows use of MS SQL database

MAINTAIN SUBSCRIBER ACCOUNTS

Using a set of well-defined program screens, Remote Link™ allows you to easily set up and maintain subscriber account files and connect with panels to download and upload information. Remote Link also allows you to print copies of account and operator activity.

FREE DOWNLOADS FOR DMP DEALERS

DMP Dealers can download Remote Link and updates from the DMP Web site free of charge. The quick and simple download includes the User Guide and context-sensitive help!

EASY TO USE

Remote Link installs in a few minutes. Select any of the menus by simply pressing a few keys on the keyboard or by clicking on the menu title. The windows provide you with the necessary information to quickly maintain subscriber accounts.

CUSTOMIZE FIELDS

Rename field titles and drop-down list items to customize program software.

CHOICE OF CONNECTIONS

Connect to your alarm panel accounts through a data network, the Internet, a telephone line, or directly from your computer.

IMPORT/EXPORT ACCOUNT PROGRAMMING

Panel account information and programming can be easily shared between databases. When installing more than one panel, the technician can program the individual panels and then export the account information to individual files for each panel or a single file with the data for all installed panels. This panel data can later be imported into the Central Station Remote Link computer.

PROGRAMMING AND CONTROL OPTIONS

You have the freedom to remotely program and control all DMP XR Series panels using Remote Link. Additionally, you can program the XT & XR Series panels directly from a laptop computer.

ACCESS AND LOG-ON

Customized levels of authority allow you to restrict each operator to access only specified functions. Operators must be logged in, providing a record of all changes made.

REMOTE LINK HELP

Get detailed help immediately! When you have a question in Remote Link, press the F1 key to view the help text that relates directly to the screen or field where you are working. The User's Guide also provides additional help and information.

REMOTE LINK TOOL BAR

Remote Link provides a customized toolbar to assist you when performing common tasks. The tool bar displays just below the menu bar. Simply place a button on the toolbar to quickly open the needed window without using the menu bar and drop-down menus.

ADVANCED REPORTING MODULE

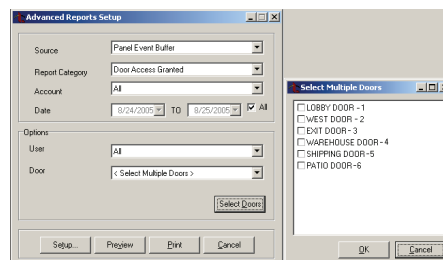


ADVANCED REPORTING MODULE

The Advanced Reporting Module allows you to create custom reports using real-time events from PC Log Reports or from a previously retrieved Panel Event Buffer.

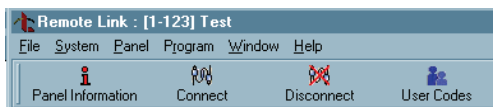
Events may be filtered using different Report Categories allowing you to create reports that suit your specific needs, including the following categories:

- Arming
- Disarming
- Area Late to Close
- Door Access Granted
- Door Access Denied
- System Monitors
- System Events



Advanced Reporting Display

Customized Tool Bar



EXPORT CAPABILITIES

Save reports in a variety of available file types. Open the reports in programs such as Microsoft Excel, and integrate the data into other documents or archive them. Supported file types include:

- Text File (*.TXT)
- Comma Separated (*.CSV)
- HTML document (*.HTM)
- Excel spreadsheet (*.XLS)
- Rich Text Format (*.RTF)
- Windows Metafile (*.WMF)



ALARM MONITORING AND COMMAND CENTER MODULES

The Alarm Monitoring and Command Center Modules share common functions detailed below.

Add Alarm Monitoring or Command Center to workstations where you want to monitor and print events for subscriber accounts. The modules allow you to monitor door access events at the site, providing a higher level of security by monitoring who comes and goes and when. You can send your subscribers reports of their openings and closings to keep for their records.

HYPERLINK SUBSCRIBER INFORMATION

Hyperlink to files containing additional information about the site allowing operators to give proper information to the authorities such as the site password and address.

EASY-TO-USE INTERFACE

When an alarm signal is received, the Alarm Monitoring Alarm List or the Command Center Alarm Grid displays automatically on top of any open windows, and an alert tone sounds to identify the alarm. Operators may view the Alarm List or Alarm Grid at any time.

QUICK ACKNOWLEDGMENT

Operators may acknowledge alarms quickly by clicking on the Ack button.

ALARM LIST DISPLAY

Depending on the monitor settings, each new signal displays on a violet background in the Alarm List. Once acknowledged, the background color changes to represent the type of signal. For example, acknowledged fire alarms display on a red background.

By color-coding alarms, operators can determine the priority of the alarm signal at a glance. This ensures that operators acknowledge and respond to the most important signals before responding to non-life-threatening signals, such as a low AC signal.

Account	Message	Rpt. Time	Ackn.
1-3232	TROUBLE: SC51 Test Signal Not Received Not restored	12/22/00 2:08:54 PM	12/22/00 2:10:28 PM
1-9806	Fire Zone: 10Z 10 ALARM	0 12/14/00 2:53:59 PM	12/14/00 3:09:54 PM
1-5070	Panic Zone: 19 KEYPAD 1 ALARM by User: 0 Not restored	4 12/19/00 9:14:25 AM	12/19/00 9:14:43 AM
1-9008	Standby Battery Restored Not restored	0 12/20/00 9:24:09 AM	12/20/00 9:45:47 AM
1-900	WARNING: Panel Tamper Not restored	3 12/19/00 1:53:10 PM	12/19/00 2:03:42 PM
1-9806	Supervisory Zone: 7 SUP ALARM	2 12/12/00 12:11:26 PM	12/14/00 2:41:12 PM
1-110	Burglary Zone: 1 ROOF HATCH (Area: 1) TROUBLE Not restored	0 12/20/00 12:29:19 PM	12/20/00 12:29:38 PM
1-9806	Burglary Zone: 6 Z6 DAY (Area: 1 MAIN) TROUBLE	4 12/12/00 12:07:58 PM	12/14/00 1:40:32 PM

Alarm Monitoring Display

COMMAND CENTER GRID

Installing the Command Center Module adds the Alarm Grid window display to Remote Link. The Alarm Grid organizes subscriber accounts by account number in the format of a grid. Each account has its own Alarm List. When you click on the Alarm Grid segment for an account, the Alarm List opens to display the account alarm and information.

System	1-1	1-2	1-5	1-10	1-11	1-21	1-46
1-50	1-60	1-90	1-100	1-109	1-110	1-111	1-112
1-113	1-120	1-121	1-125	1-126	1-128	1-136	1-137
1-141	1-150	1-160	1-163	1-167	1-170	1-183	1-212
1-231	1-251	1-252	1-275	1-301	1-302	1-316	1-332

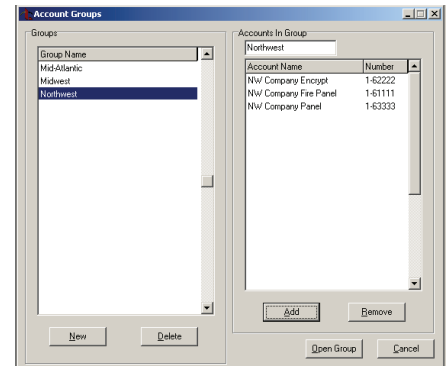
Command Center Display

ACCOUNT GROUPS MODULE

The Account Groups module saves time when maintaining Profiles, Schedules, Output Schedules, Holidays, Users, and User Codes on grouped XR500N, XR500E, XR550DN, and XR550DE panels. For convenience, associate the groups by location, business, or other logical grouping.

Create Profiles that define the authority for a user code, then simply select the appropriate user code for each user to specify their authority type/level.

Using Batch Programming, operators can maintain profiles, schedules, output schedules and holidays for multiple XR Series panels at once. With the Schedules feature, operators can assign auto arm/disarm of specified areas by hour and day.



Account Groups Display

SQL MODULE

The SQL Module allows larger corporate users to take advantage of SQL DATABASE Server installations they already have in place. This module allows an administrator to configure an ODBC connection to an existing Microsoft SQL Server installation. The SQL Module then creates the database structure necessary to store all of the panel programming information. The module also allows the administrator to export all existing panel programming information from the standard System Link DBISAM database, and then import that information into the newly created Microsoft SQL database. The SQL Module comes with 5 seats/licenses. If more than 5 are required, additional SQL MODULE ADD's must be purchased, offering additional single licenses to add on to your Remote Link and System Link programs.

Remote Programming Software

LINK SERVER APPLICATION

Remote Link is designed and licensed specifically for use on a single workstation. Link Server software accommodates larger installation and service environments where multiple computers are used to upload/download panel information.

When installed on a network server, Link Server allows multiple client computers to simultaneously access Remote Link.



LINK SERVER

ACCESSORIES

- 462N-DC Network Interface Card
- 394 Direct Programming Cable

USB PROX READER

Use the unique desktop unit with Remote Link to greatly reduce the time spent manually entering proximity credentials. Simply press the Scan Card button and present the proximity device to the 1301P USB Prox Reader. The device quickly and automatically assigns a code to the selected user.



USB Prox Reader

SIMPLE INSTALLATION

Power for the USB Prox Reader and communication to the PC is provided via a standard USB connection.

PROXIMITY DEVICE FORMATS

The USB Prox Reader is specifically designed for all DMP HID formats, making any proximity device that is compatible with DMP panels compatible with the USB Prox Reader.

SYSTEM REQUIREMENTS

- Pentium Processor
- 800 x 600 or higher monitor resolution
- CD-ROM drive
- One COM port if connecting to SCS-1R, SCS-105, or direct cable connection (two for pass-through)
- One NIC Card if using Ethernet connection for alarm communications

OPERATING SYSTEM COMPATIBILITY

- Windows 2000 *
- Windows ME
- Windows XP *
- Windows Vista/7

* Requires Administrative authority to install software.

Note: Cellular Activation requires Windows 2000 Operating System or later and Internet connection.

PANEL COMPATIBILITY

The following software is compatible with all DMP XR Series Panels:

- Remote Link
- Alarm Monitoring
- Command Center
- Advanced Reporting
- Link Server
- SQL Module

The Account Groups Module is only compatible with XR500/XR550 Series panels.

SOFTWARE LICENSE LEVELS

Order the level to fit the number of accounts monitored. Call DMP Customer Service to upgrade to the next level.

- 1 – 10 accounts
- 11 – 50 accounts
- 51 – 100 accounts
- 101 – 500 accounts
- 501 – 1000 accounts
- 1001 – 2500 accounts
- 2501 – 5000 accounts

OPERATION

For optimum performance, use Alarm Monitoring and Command Center Modules in applications that receive 500 signals or less per day and a database that contains 10,000 signals or less.

