

AUTOMATIC SPRINKLERS

EXTENDED COVERAGE SPRINKLERS

EC-5

Pendent & Recessed Pendent

- Light hazard
- 3 mm bulb
- Coverage up to 20' x 20' (6,1 m x 6,1 m)

K FACTOR	K=5.6 (80,6)
THREAD SIZE	1/2" NPT
APPROVALS	UL, C-UL, FM, NYC
TEMPERATURE	135°F/57°C, 155°F/68°C
ESCUTCHEON	Style 50
ESCUTCHEON FINISH	Signal White, Chrome Plated, Brass Plated
SPRINKLER FINISH	Natural Brass, Chrome Plated, Signal White Polyester
SIN	TY3232
TECH DATA	TFP228



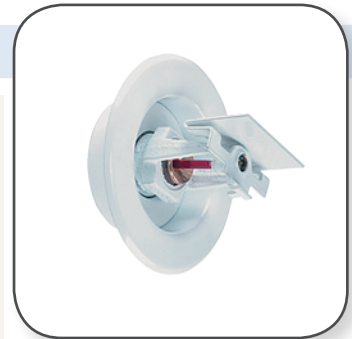
Sprinkler Wrenches



Horizontal Sidewall & Recessed Horizontal Sidewall

- Light hazard
- 3 mm bulb
- Coverage up to 16' x 24' (4,9 m x 7,3 m)
- Designed for use in hydraulically calculated sprinkler systems in commercial occupancies such as churches, restaurant seating areas, hotels, educational facilities, offices, etc.

K FACTOR	K=5.6 (80,6)
THREAD SIZE	1/2" NPT
APPROVALS	UL, C-UL, FM, NYC
TEMPERATURE	135°F/57°C, 155°F/68°C, 200°F/93°C
ESCUTCHEON	Style 50
ESCUTCHEON FINISH	Signal White, Chrome Plated, Brass Plated
SPRINKLER FINISH	Signal White, Pure White Natural Brass, Chrome Plated
SIN	TY3302
TECH DATA	TFP298



Sprinkler Wrenches



TY-FRB

Horizontal & Recessed Horizontal Sidewall

- Light hazard
- 3 mm bulb
- Two-piece escutcheon converts sidewall sprinklers into low profile sprinkler assemblies with coverage areas up to 16' x 22' (4,9 m x 6,7 m) for K=5.6 and 16' x 24' (4,9 m x 7,3 m) for K=8.0
- Provides 3/4" NPT (19,1 mm) of horizontal adjustment from the recessed sidewall position
- Quick & Standard Response (see tech data sheet)

K FACTOR	K=5.6 (80,6) K=8.0 (115,2)
THREAD SIZE	1/2" NPT • 3/4" NPT
APPROVALS	5.6= UL, C-UL, FM, NYC, VdS • 8.0= UL, C-UL, FM, NYC
TEMPERATURE	135°F/57°C, 155°F/68°C, 175°F/79°C
ESCUTCHEON	Style 10 • Style 20 Style 30 • Style 40
ESCUTCHEON FINISH	White Coated, Chrome Plated, Brass Plated
SPRINKLER FINISH	Natural Brass, White Polyester, Chrome Plated
SIN	TY3332, TY4332
TECH DATA	TFP296



Sprinkler Wrenches



Always refer to the product's Technical Data Sheet for a complete description of all Listing and Approval criteria, design parameters, installation instructions, care and maintenance guidelines, and our limited warranty.